



ACTIVATING THE NATURAL RESOURCE ECONOMY

LINDSAY WHITE
SR. LAND PROTECTION SPECIALIST

Activating the Natural Resource Economy = Activation

What is Activation?

Our Approach

Case Studies

- *Housing*
- *Forest Products*
- *Ecotourism*

Tools and Resources





**What is
Activation?**



The Conservation Fund

The Conservation Fund is in the business of protecting the land for all of us so nature and people can thrive together.

- Land Conservation
- Working Lands
- Resilient Communities
- Clean Energy Economy





Our Vision

- Rural economies that are:
 - Inclusive
 - Diversified
 - Prosperous
 - Conservation-compatible
- Build generational wealth, public health, and quality of life
- Expanded community of support and increased advocacy for conserved lands



Stacy Funderburke



Jerry Monkman



LANDSCAPE-SCALE
CONSERVATION



ACTIVATING
THE
**NATURAL
RESOURCE
ECONOMY**

COMMUNITY
INFRASTRUCTURE
INVESTMENT



NATURE-BASED
ECONOMIES



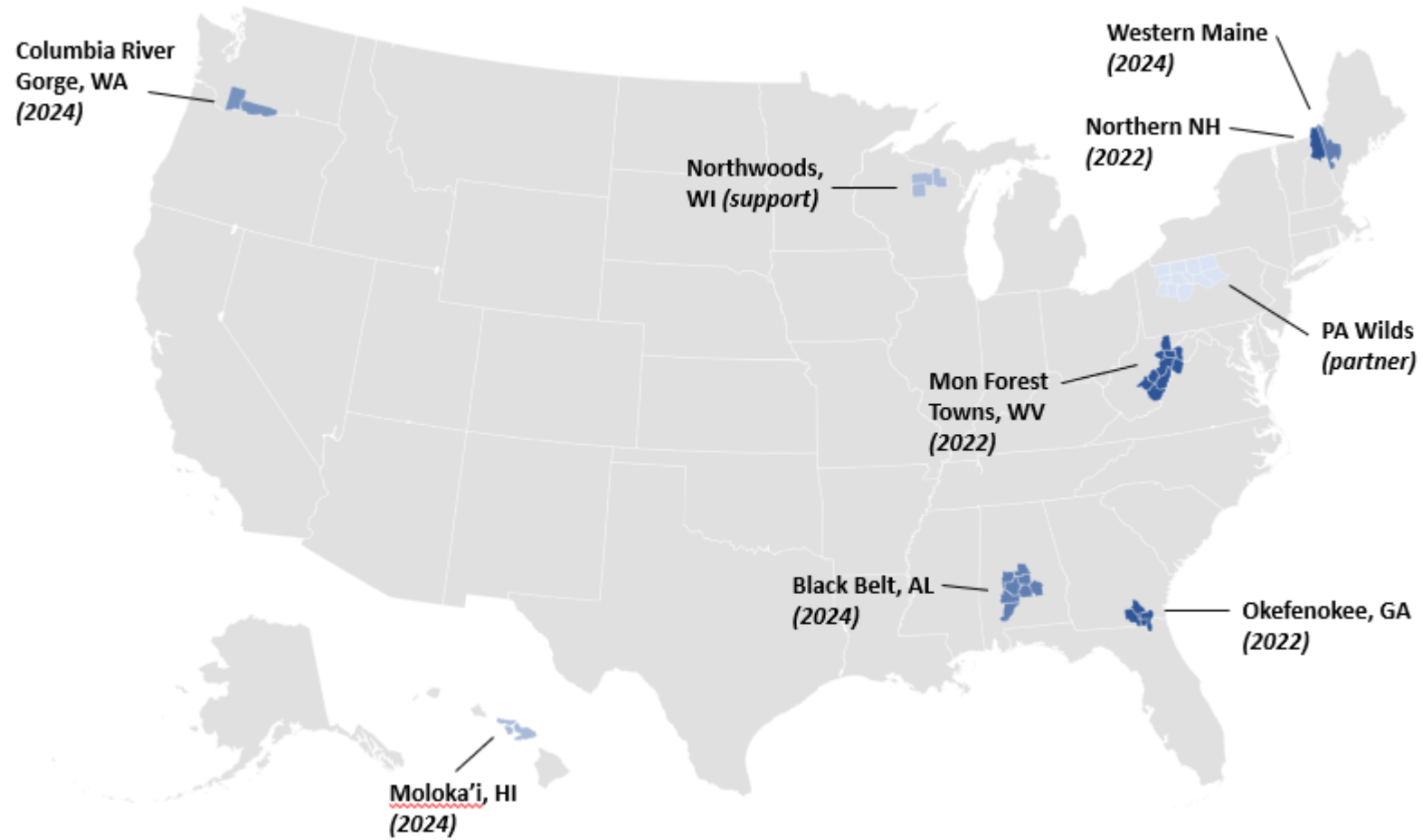
NATURE-
ADJACENT
DEVELOPMENT





Our Approach

Where We're Active





Our Activation Strategy

Collate a pipeline of relevant, fundable projects

Build local capacity to pull down federal funds

Innovate at the nexus of conservation and economic development



Address the visibility gap



Seize the moment



Activate the land base





How We Work

- **Technical assistance and flexible funding**
- **Investing in People**
- **Building Networks**
- **Sharing Resources**
- **Increasing Visibility**

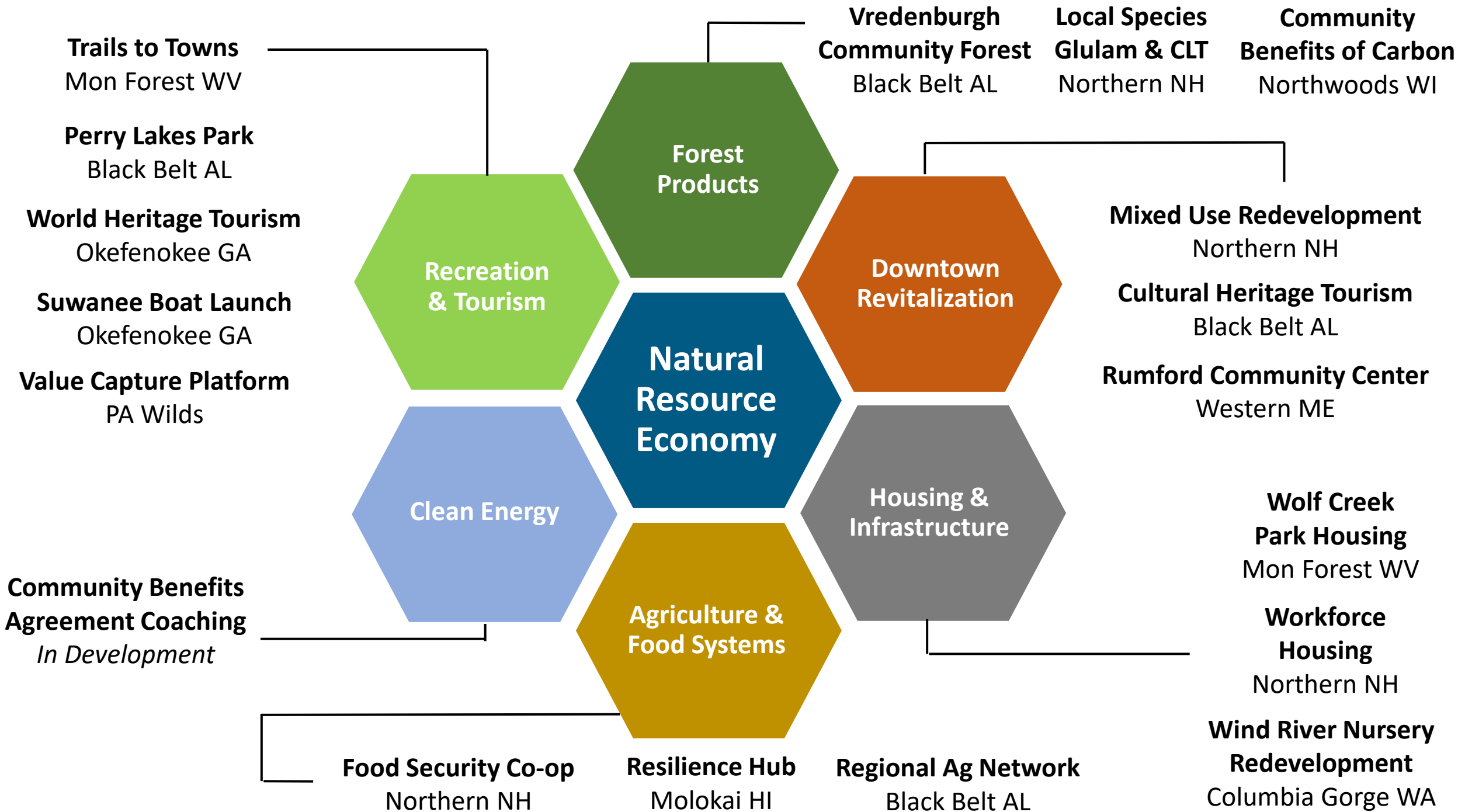


Nikki A. Witt



The Natural Resource Economy





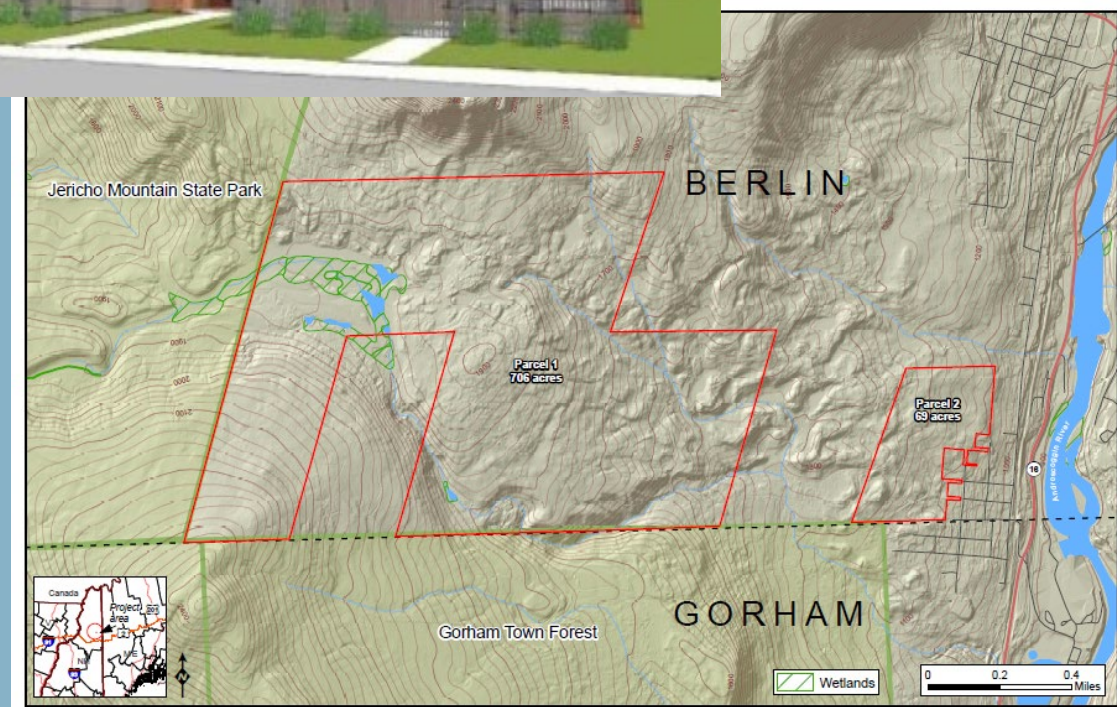


Case Studies

Housing and Redevelopment

Filling gaps in the value chain.

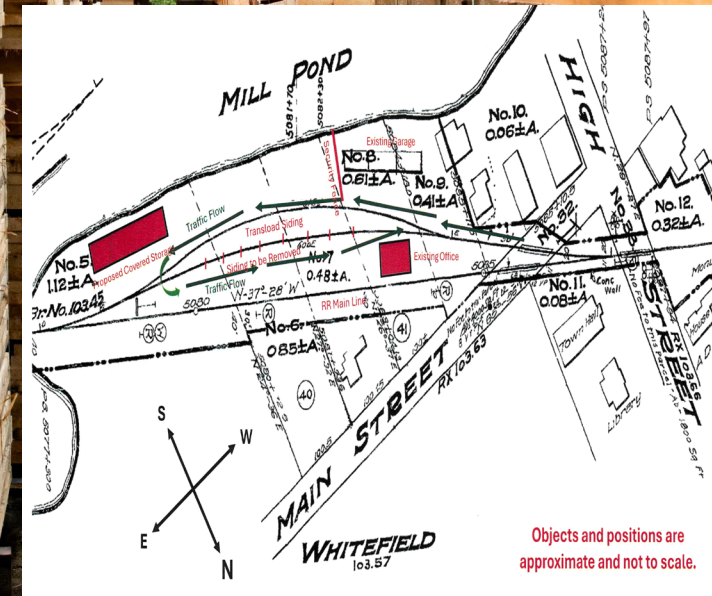
- Coos County, NH
 - NH Outdoor Rec Value Chain Analysis
 - Housing project adjacent to Gorham Town Forest
- Rumford and Bethel Maine
 - Community Center and Childcare



Forest Products

Strategic partnerships guide strategic value chain interventions.

- Forest Product Certification
- Workforce Development (Project Learning Tree)
- Rail Transit Access

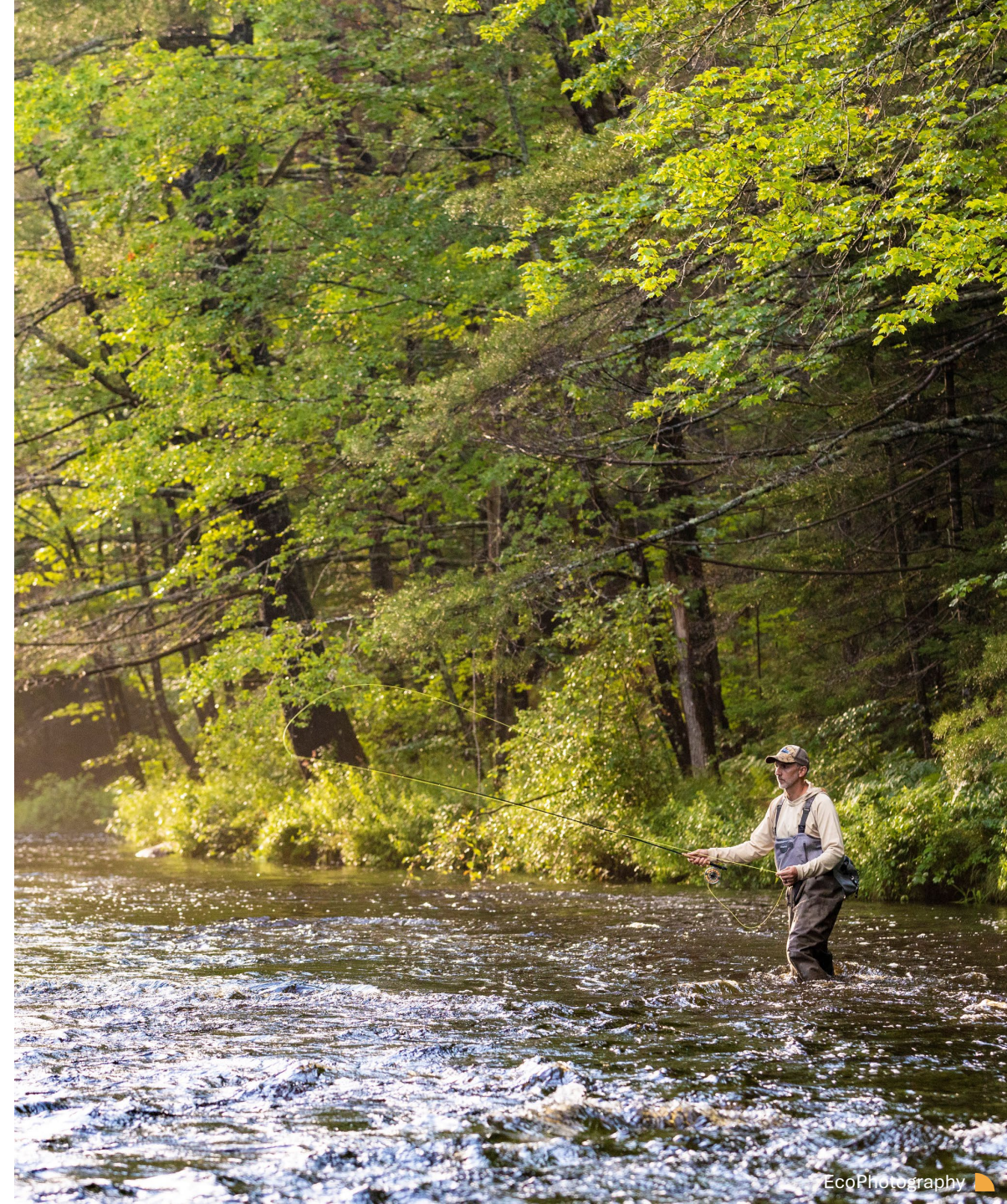




Outdoor Rec and Ecotourism

**Building on conserved lands and
community stewardship**

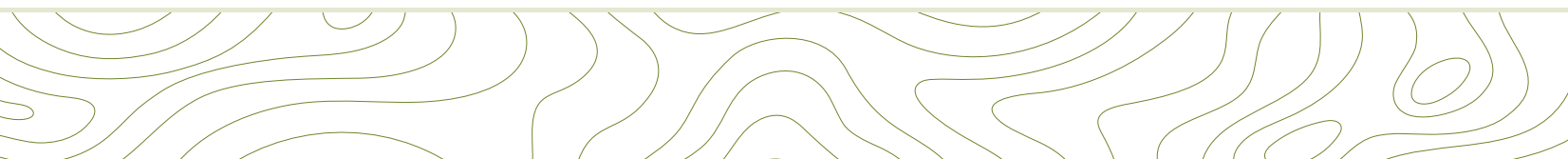
- Planning and Predevelopment
- Economic Impact Assessment
- Scalable Tools





Tools and Resources

- **Webpage and Blog** – Live and Growing
- **Whitepaper** – Regenerative Rural Economies
- **Tableau Dashboard** – Planned Updates
- **Regional Guide** – Revising and Expanding
- **Peer Network Opportunities**
- **Warehouse of Projects**





Signature Projects

Real estate
projects that
activate the land.





Questions?

Lindsay White
lwhite@conservationfund.org