

















Your network bandwidth is low



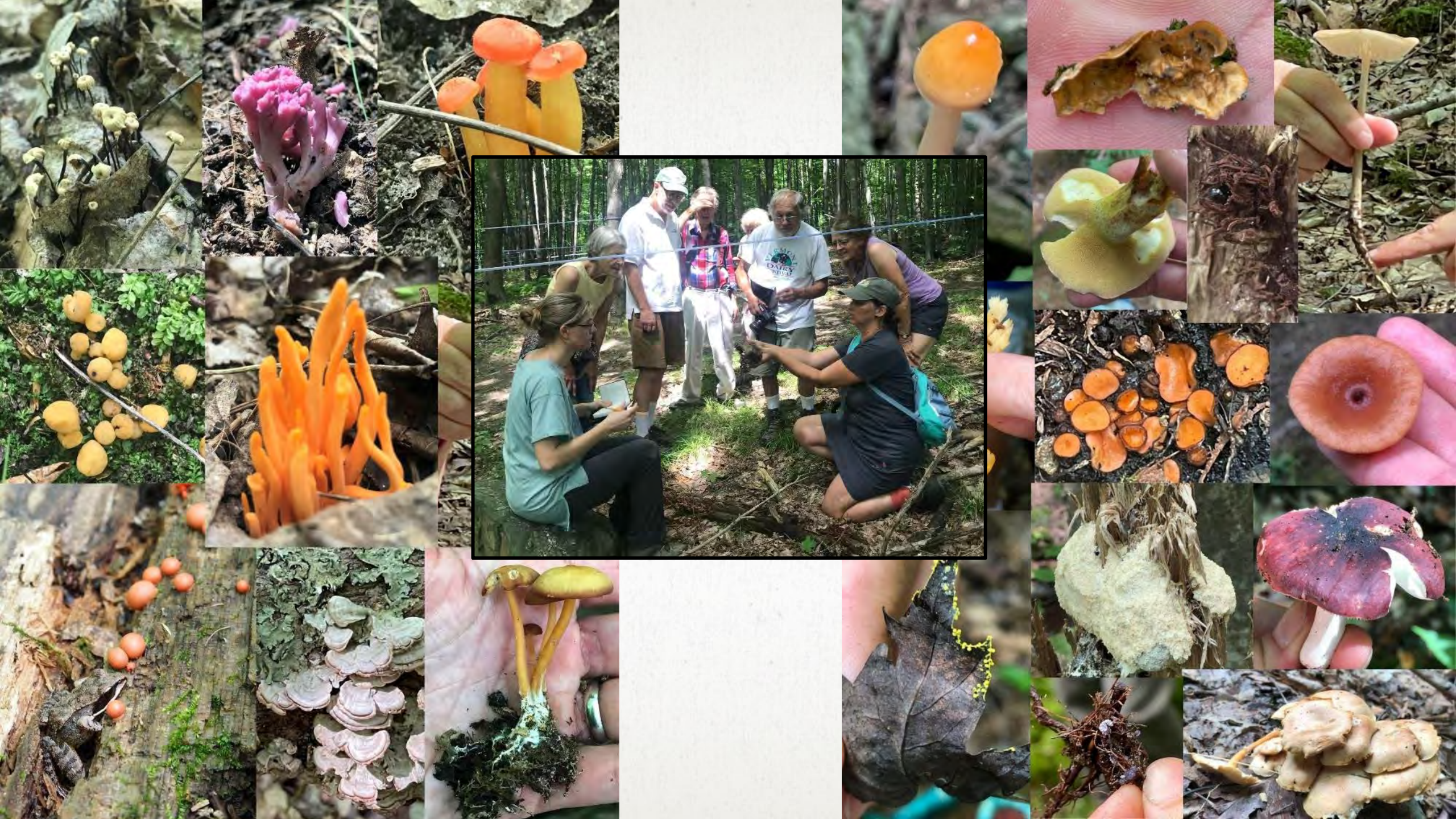






























COLD HOLLOW  
TO CANADA

# The Woodlots Program Toolkit



**BUILDING COMMUNITY AROUND LANDSCAPE LEVEL STEWARDSHIP**



## Today, we'll cover:

- **Context: Who IS Cold Hollow to Canada?**
- **What *is* the Woodlots Program?**
- **A Toolkit to help YOU get started!**
- **Q&A, Making the Toolkit work for YOU!**

An aerial photograph of a Vermont landscape during autumn. The foreground and middle ground are filled with dense forests showing vibrant orange, yellow, and red foliage. In the center, a small farmstead is visible, featuring a large red barn with a white roof and several smaller buildings. The background consists of rolling hills and mountains under a dramatic, cloudy sky with patches of light breaking through. The overall scene is a mix of natural beauty and rural life.

*More than 2/3 of Vermont's forestland is privately owned.*

- **Maintaining forest health relies on many individuals who steward independent parcels.**

- **By working together, we believe we can do more.**

*Conference theme:*

# ***Embracing Complexity Through Partnership***

**Woodlots Program partners:  
Conservation groups  
Landowners**



A group of about ten people, dressed in winter clothing like jackets, hats, and gloves, are standing in a snowy forest. They are all looking towards a woman on the right side of the frame who appears to be leading the group. The forest has many thin trees and a thick layer of snow on the ground.

*Goal of conservation groups:*

*Going beyond the “One-Off”*

*How do we SUSTAIN engagement?*

A photograph of a dense forest with a dirt path winding through it. The ground is covered in vibrant green ferns. Tall, thin trees with green foliage surround the path. The lighting is soft, suggesting a shaded forest environment.

*Technical Assistance Providers:*

*“Different Day,  
Different Place,  
Same Information”*



*Landowners:*

*“Different Day,  
Different Service Provider.”*

*...IS the information the same?*

***Landowners:***

*“I don’t know enough to take action.”*

*Change is hard work.*

*“There are so many options. Which are right for me?”*

*I’m all alone.*

A group of people is walking through a field of tall grass and brush in an autumn setting. The background shows rolling hills covered in trees with yellow and orange foliage. The sky is overcast. The text is overlaid on the image in a white, italicized font.

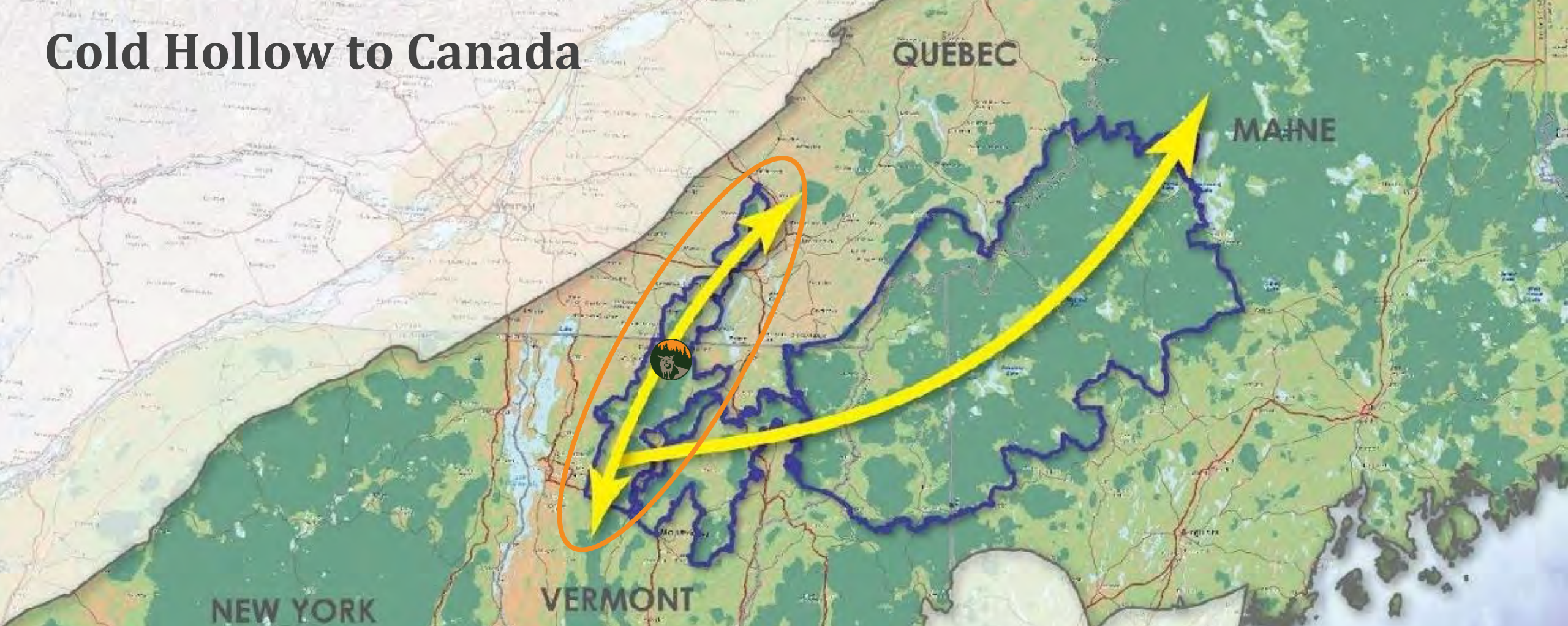
*Changing climate*  
*Changing ecological needs*

*New policies*  
*New programs*  
*New funding / opportunities*

*The Woodlots Program:*

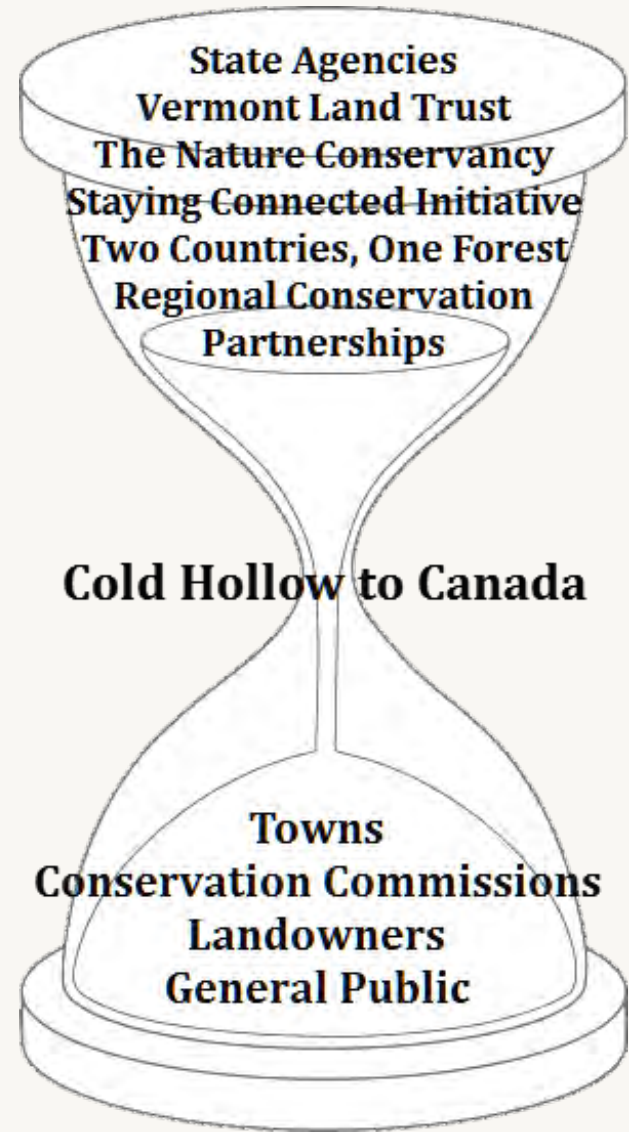
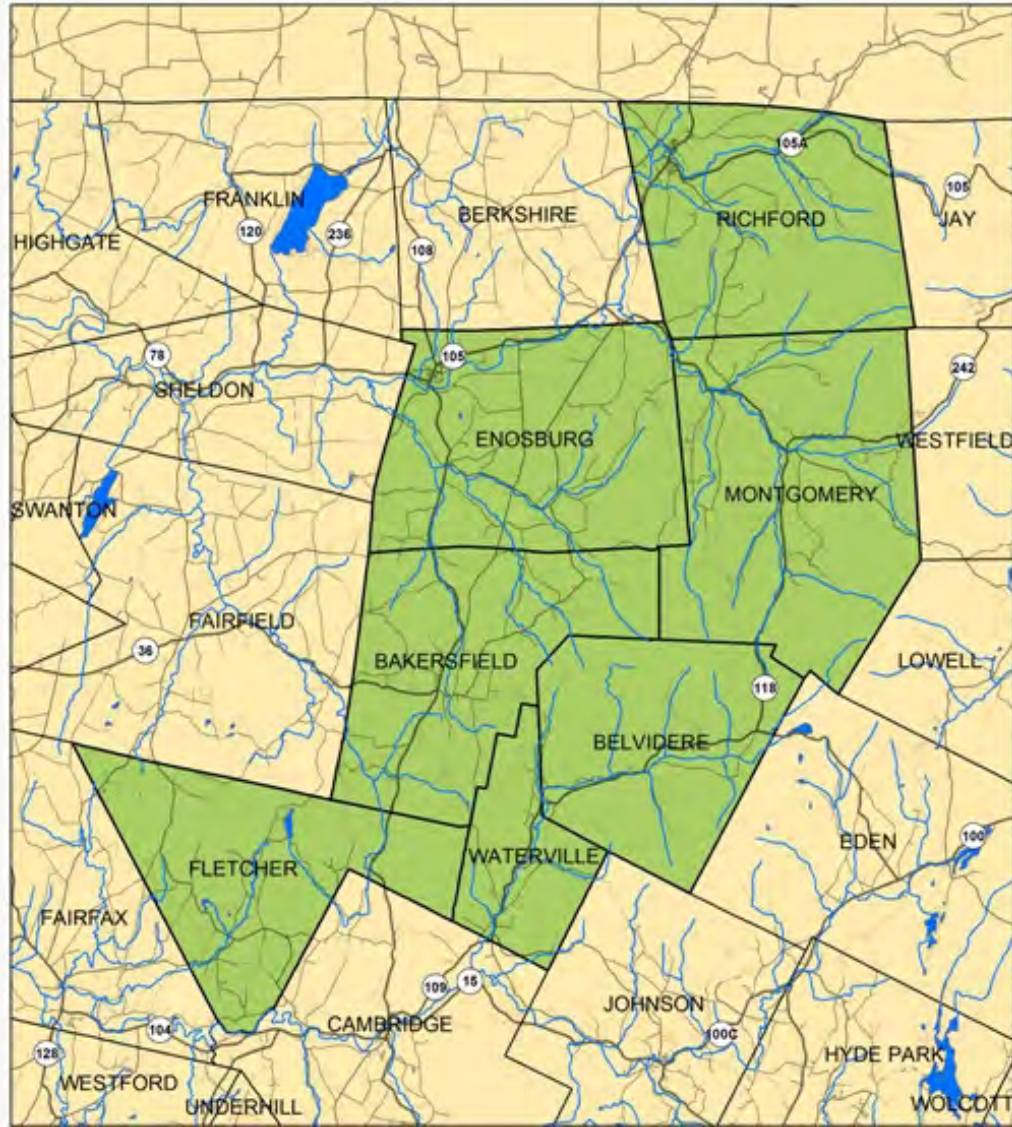
*Helping everyone navigate  
(Embracing) Complexity  
Through Partnership*

# Cold Hollow to Canada



**OUR VISION**  
A resilient and connected ecosystem across  
the Northern Forest









**Goal: Land Conservation**

A photograph of a dense, lush green forest. The trees are tall and thin, with vibrant green leaves. A dirt path winds through the forest, leading the eye from the foreground into the distance. The ground is covered in green ferns and other undergrowth. The overall atmosphere is peaceful and natural.

**Goal: Forest Stewardship**



**Goal: Community Empowerment**

**You only:**

**SEE** what you know  
**LOVE** what you see  
**PROTECT** what you love

# The Woodlots Program





**Forest Landowners**

**Peer Engagement**

**Technical Assistance**

**+**

**Funding**

---

**= Stewardship & Conservation**



Peer Engagement:

Woodlots Gatherings:

Learning From:

CHC

Partners

Experts

Each other



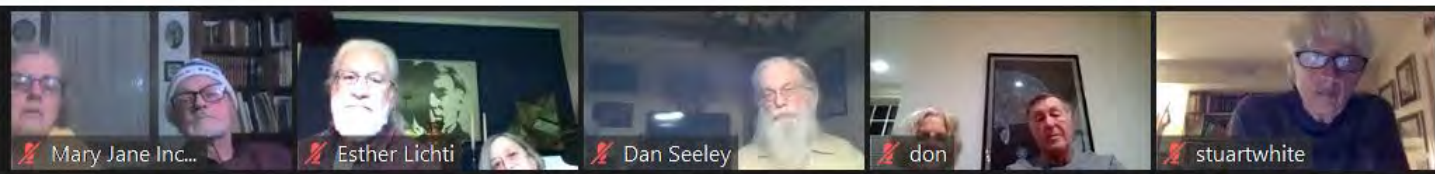












Your network bandwidth is low







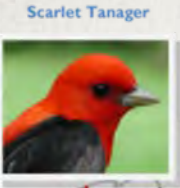




# Technical Assistance

Photo: Jessica Boone





Scarlet Tanager



Eastern Wood-Pewee



Blue-headed Vireo



Wood Thrush



Yellow-bellied Sapsucker



American Woodcock



Chestnut-sided Warbler



Black-throated Blue Warbler



Black-throated Green Warbler



Canada Warbler



Veery



White-throated Sparrow



# SONGBIRD HABITAT ASSESSMENTS







# CLIMATE CHANGE ANALYSIS

## ADAPTATION & RESILIENCY

### Strategy 9: Facilitate community adjustments through species transitions

#### 9.1—Anticipate and respond to species decline

#### 9.2—Favor or restore native species that are expected to be better adapted to future conditions

- Rich soils on portions of these properties provide a buffering capacity against climate change. Sugar maple and yellow birch are both predicted to be stressed by climate change but the optimum conditions found on parts of this property provide an advantage to maintaining these species on this site for the long term: **7 of 12 plans** (B, C, Hen, Hew, M, PC, R)

#### 9.3—Manage for species and genotypes with wide moisture and temperature tolerances

#### 9.4—Emphasize drought and heat tolerant species and populations

- Natural red oak regeneration has been released by removing the overstory: **1 of 12 plans** (PC)
- Red oak seedlings have been planted: **1 of 12 plans** (PC)
- Red oak acorns have been planted, amended plan: **1 of 12 plans** (W)

#### 9.5—Guide species composition at early stages of development

- Pre-commercial treatments that guide species are implemented in portions of these properties: **9 of 12 plans** (B, C, Hen, M, PC, P, S, R, W)



# Funding and Implementation







Enosburgh



Montgomery



Richford



Belvidere & Waterville

# Woodlots Programs



Bakersfield & Fletcher

**Land Conserved:  
>3,000 acres**

**Forest  
Stewardship:**

- Updated forest management plans
- Forest Songbird Habitat Development
- Invasive Species Control
- Crop Tree Release
- Mast Tree Release
- Forest Roads and Trails (erosion control, etc.)
- Stream Crossings
- Planting trees
- Early Successional Habitat Development.
- (and SO MUCH more!)

**Participation of  
>100 landowners  
(67 ownerships),  
~25,000 acres**



**How have we  
done?**





A group of about seven people are gathered in a forest. Some are touching the trunks of trees. The forest floor is covered with fallen leaves. The text is overlaid on the image.

**Thank you!**

**Landscape Scale Restoration Grant  
High Meadows / Daybreak Fund  
Open Space Institute  
Davis Foundation**



***Toolkit:***

[www.woodlots - toolkit.coldhollowtocalanada.org](http://www.woodlots-toolkit.coldhollowtocalanada.org)

Funded by a Vermont Watershed Grant  
High Meadows/Daybreak Fund (Vermont Community Foundation)

[www.coldhollowtocalanada.org](http://www.coldhollowtocalanada.org)

[monica@coldhollowtocalanada.org](mailto:monica@coldhollowtocalanada.org)

[Nancy.Patch@vermont.gov](mailto:Nancy.Patch@vermont.gov)



**Interested in starting your own program?**

**Need help? Let me know!**





**2023**  
RCP NETWORK  
**Gathering**

**Evaluation  
Form**



Please submit feedback regarding the workshop you have just attended; you will be helping to ensure that the RCP Network continues to provide valuable tools, trainings, and services.

Workshop Name: \_\_\_\_\_

**Content Quality?**

- Poor
- Fair
- Satisfactory
- Very Good
- Excellent

**Quality of Speakers/  
Presenters?**

- Poor
- Fair
- Satisfactory
- Very Good
- Excellent

**Quality of Discussion?**

- Poor
- Fair
- Satisfactory
- Very Good
- Excellent

What did you take away from this workshop/what struck a chord with you?

---



---



---



---

Any additional comments about the workshop?

---



---



---



---

Give any recommendations for improving the Gathering next year!

---



---



---



---

