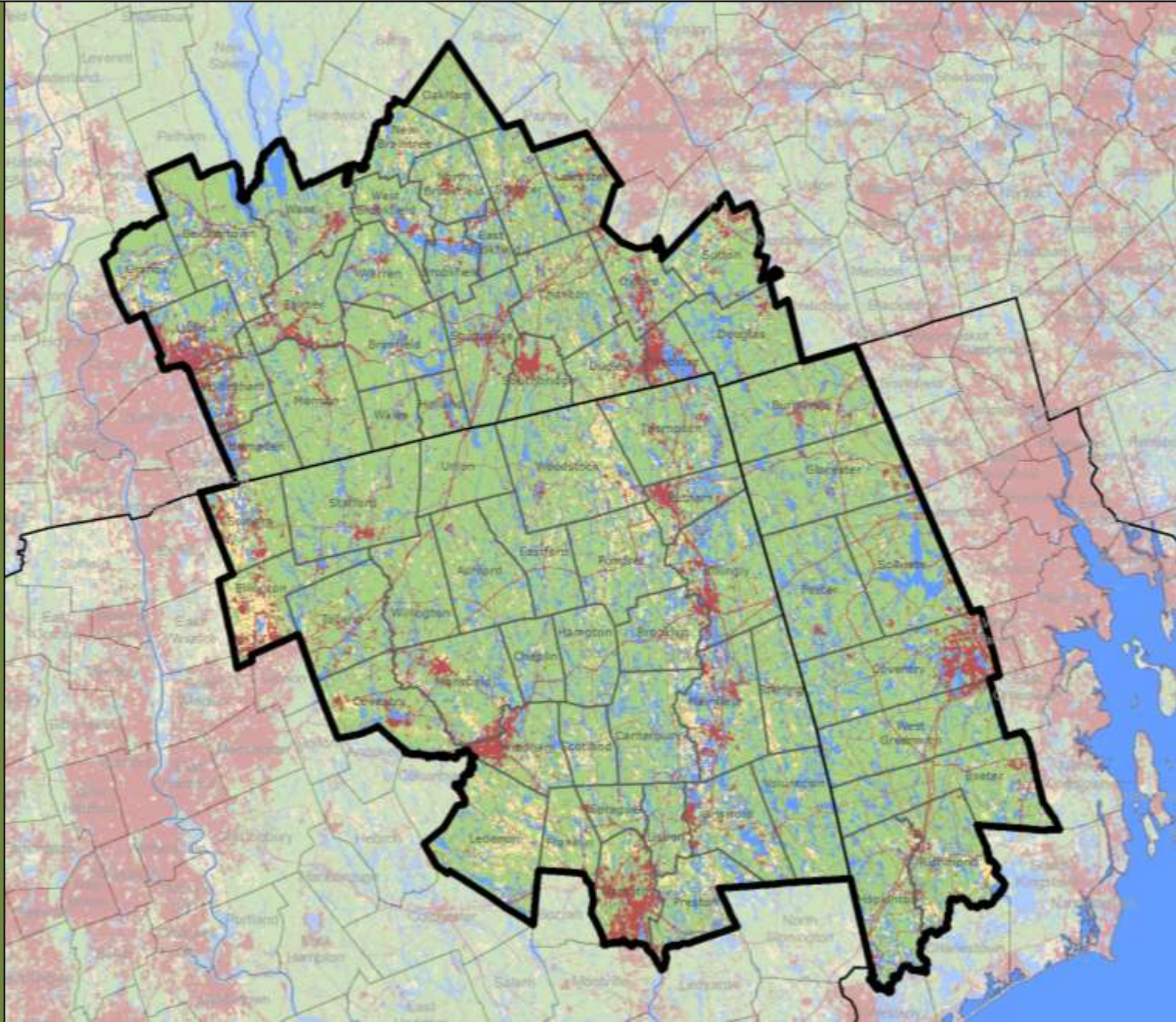


Southern New England Heritage Forest Partnership



Partners

Nonprofits & Land Trusts

- East Quabbin Land Trust
- Highstead
- The Last Green Valley
- MassConn Sustainable Forest Partnership
- Opacum Land Trust
- The Nature Conservancy

State & Federal Agencies

- CT Department of Energy & Environmental Protection
- Mass Department of Conservation & Recreation
- Mass Executive Office of Energy & Environmental Affairs
- RI Department of Environmental Management
- USDA Natural Resource Conservation Service (NRCS) – CT and RI

Public Organizations

- Northern Rhode Island Conservation District (NRICD)
- RI Resource Conservation & Development Area Council

Land Grant Universities

- UConn Cooperative Extension
- University of Rhode Island

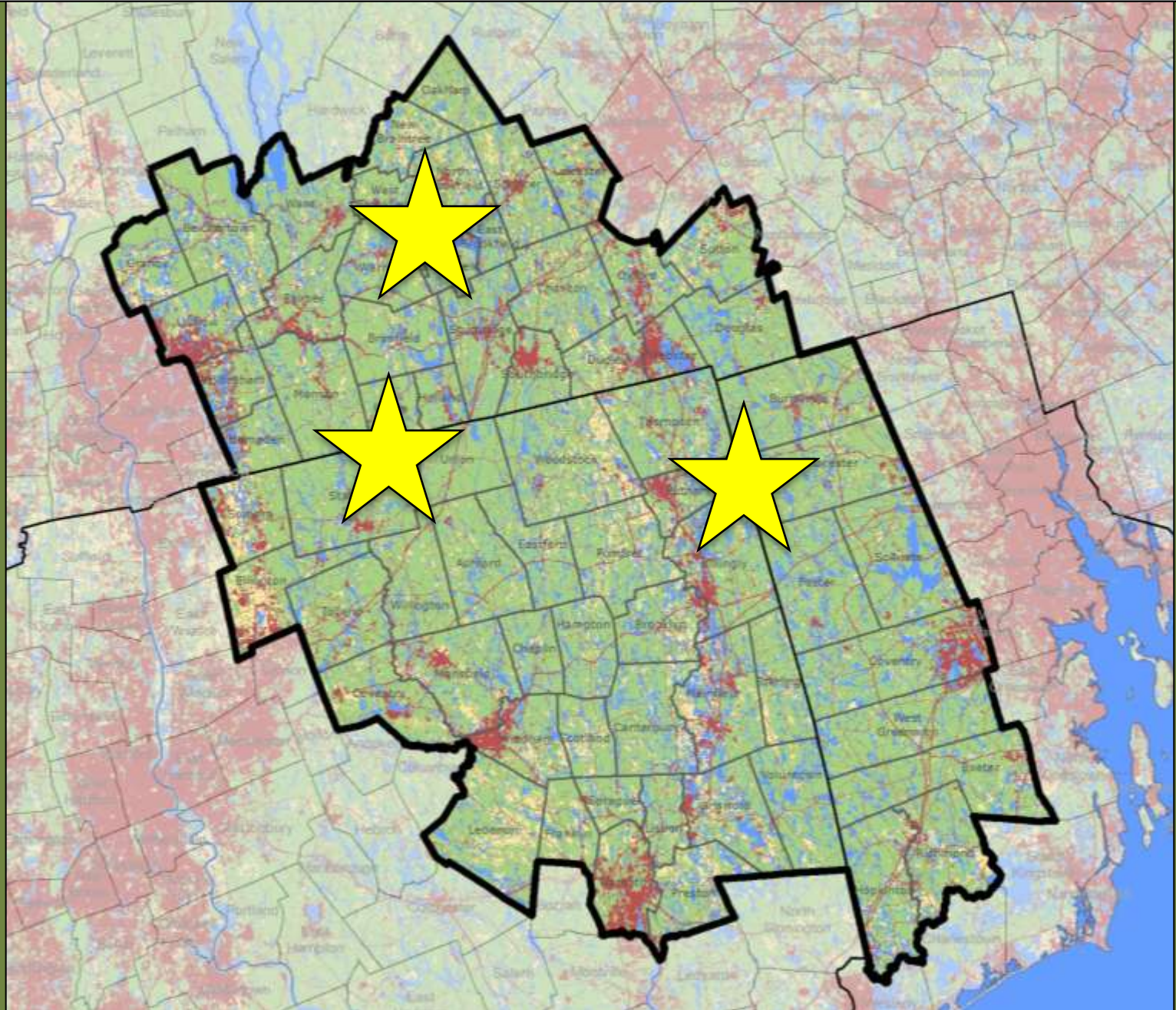
Public Utility

- Providence Water

Private Sector

- Consulting foresters

Southern New England Heritage Forest Partnership



Woodland Retreat Owner

Orientation:

Own woodland primarily for its beauty

Concerns:

- Development
- Don't trust loggers
- No trusted source on how to manage land
- Children don't want land



Barriers:

- Lack of knowledge, afraid of doing harm
- Believe woods are fine
- Competing family interests
- No mentor

Seeking information on:
You love your woods. What's their future?

- Land improvement, i.e. how to attract wildlife
- How to choose a logger/other service providers
- Financial assistance for maintaining land

Southern New England Heritage Forest Partnership

