


# What Drives RCP Success?

An Under The Hood Look



A wide-angle photograph of a winter landscape. In the foreground, a small, calm pond reflects the overcast sky, surrounded by dry, yellowish-brown grass and some snow-covered shrubs. A wooden fence runs along the edge of the pond. In the middle ground, a dense forest of trees is heavily laden with snow, their branches creating a complex, white web. A small, snow-covered hill rises in the background, and further back, more distant hills are visible under a heavy, grey sky. The overall scene is quiet and serene, capturing the beauty of a winter day.

What are  
they doing  
together?



## Wildlife Linkages

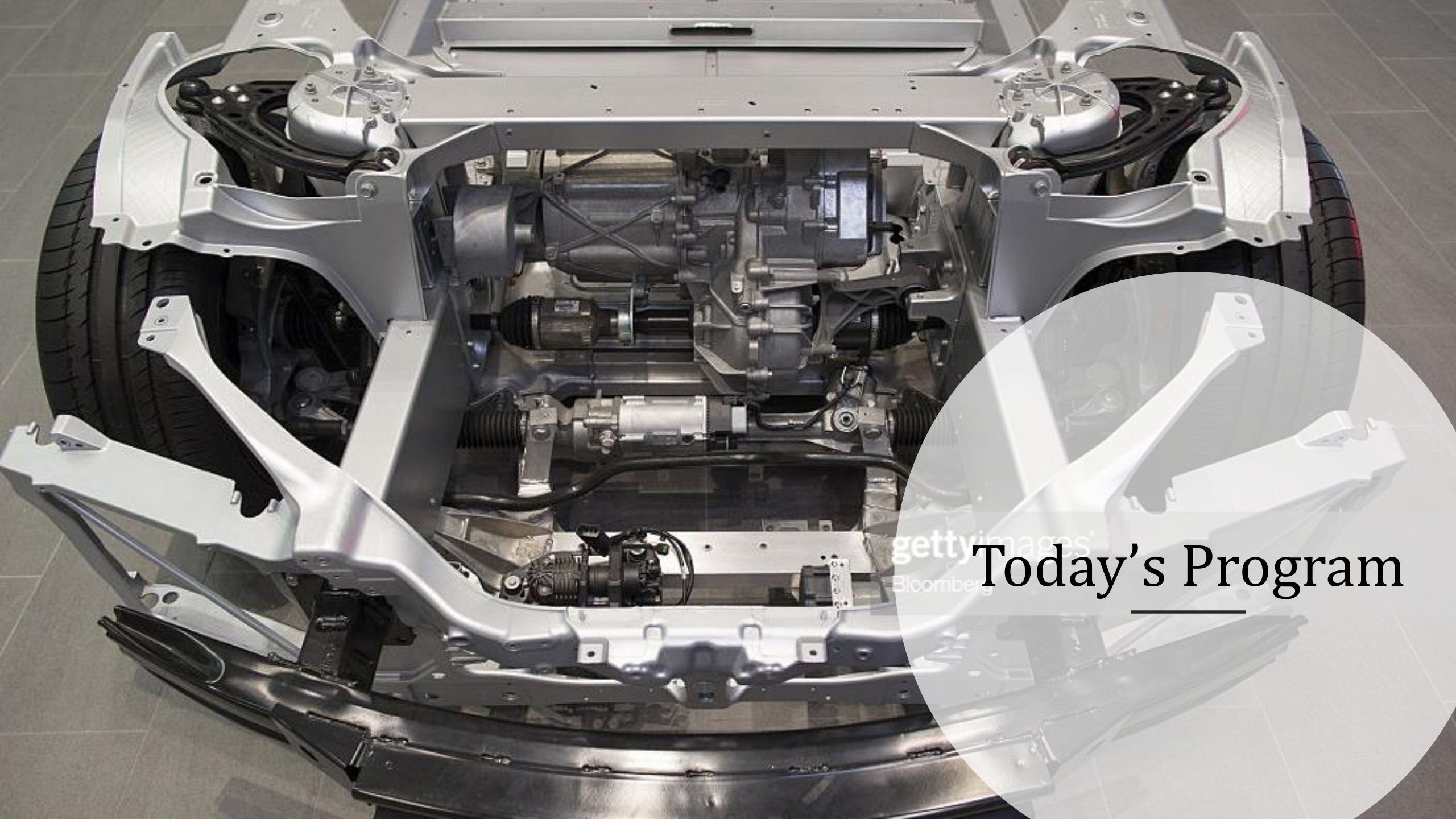
Here you can see the result of this finer scale analysis within the Staying Connected: Hudson River to Green Mountains region and the **Housatonic Valley watershed**. The **orange ovals** represent important areas between intact and more resilient forest habitats where wildlife movement is likely to concentrate at road crossings and when passing through forest edge and open habitats between forests. The **red areas** within the **Housatonic watershed** are located between the most significant core forests that maintain this climate corridor and the linkages here are of the greatest priority to conserve.



## Why Now?



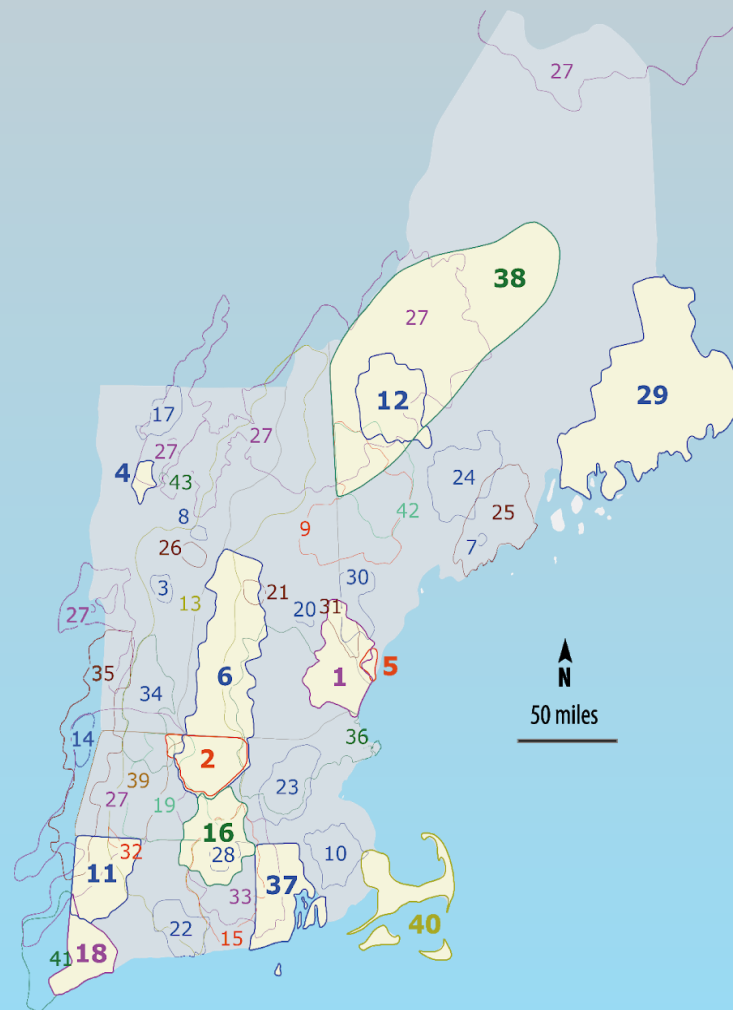




gettyimages  
Bloomberg

# Today's Program





- 1 - Great Bay Resource Protection Partnership
- 2 - North Quabbin Regional Landscape Partnership
- 3 - Chateaugay No Town Conservation Project
- 4 - Chittenden County Uplands Conservation Project
- 5 - Mt. Agamenticus to the Sea Conservation Initiative
- 6 - Quabbin to Cardigan Partnership
- 7 - River-Link
- 8 - Orange County Headwaters Project
- 9 - Upland Headwaters Alliance
- 10 - Resilient Taunton Watershed Network
- 11 - Litchfield Hills Greenprint Collaborative
- 12 - High Peaks Initiative
- 13 - Friends of the Silvio O. Conte National Fish and Wildlife Refuge
- 14 - Rensselaer Plateau Working Forest Initiative
- 15 - Thames River Basin Partnership
- 16 - Mass-Conn Sustainable Forest Partnership
- 17 - Cold Hollow to Canada Forest Link Project
- 18 - Fairfield County Regional Conservation Partnership
- 19 - Forever Farmland Initiative
- 20 - Belknap Range Conservation Coalition
- 21 - Newfound Land Conservation Partnership
- 22 - Lower CT River and Coastal Region Land Trust Exchange
- 23 - West Suburban Conservation Council
- 24 - Kennebec Woodland Partnership
- 25 - 12 Rivers Conservation Initiative
- 26 - Taylor Valley Conservation Project
- 27 - Staying Connected Initiative
- 28 - Quiet Corner Initiative
- 29 - Downeast Conservation Network
- 30 - Forest Works!
- 31 - Salmon Falls Watershed Collaborative
- 32 - Sandy Brook Conservation Corridor
- 33 - Southern New England Forest Heritage Partnership
- 34 - MA-VT Woodlands Partnership
- 35 - Berkshire-Taconic Regional Conservation Partnership
- 36 - Merrimack Conservation Partnership
- 37 - Rhode Island Woodland Partnership
- 38 - Maine Mountain Collaborative
- 39 - Berkshire Wildlife Linkage Partnership
- 40 - Massachusetts Coastal Pine Barrens Partnership
- 41 - Hudson to Housatonic Regional Conservation Partnership
- 42 - Maine West
- 43 - Shutesville Hill Wildlife Corridor Project





- **H2H VISION:**

- **A landscape mosaic abundant in forests, farms, wildlands, and waterways of the Hudson to Housatonic Region enriches the quality of life for all who live, work and play here.**

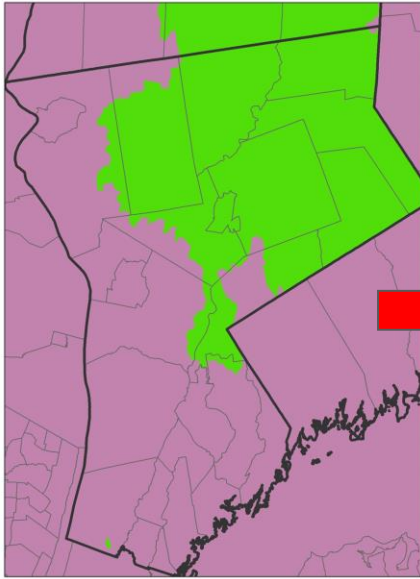
- **H2H MISSION:**

- **The H2H partner network advances the pace and practice of regional land protection and stewardship from the Hudson to the Housatonic by collaborating across boundaries to enhance the connection between people and nature.**

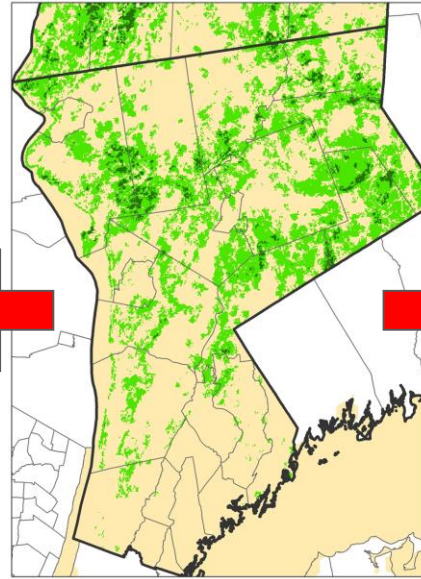




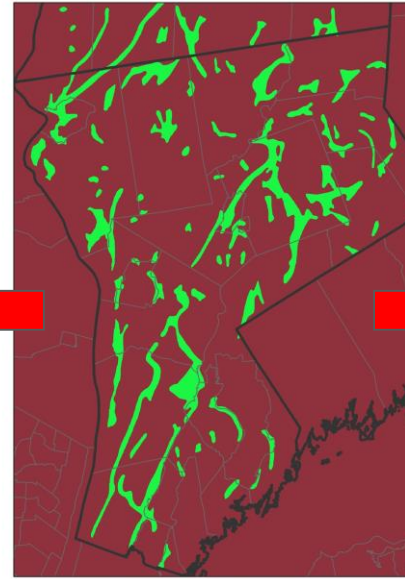
AA/AAS Watersheds



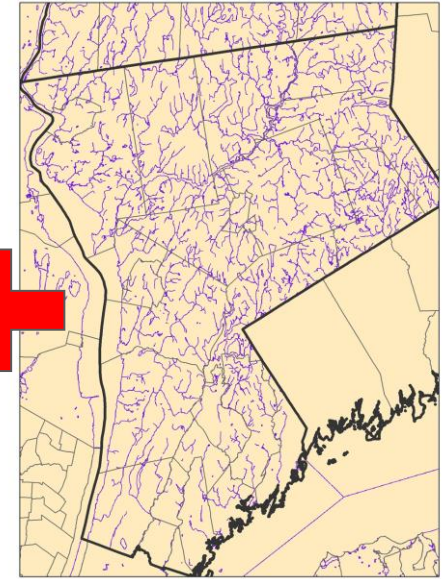
Climate Resiliency



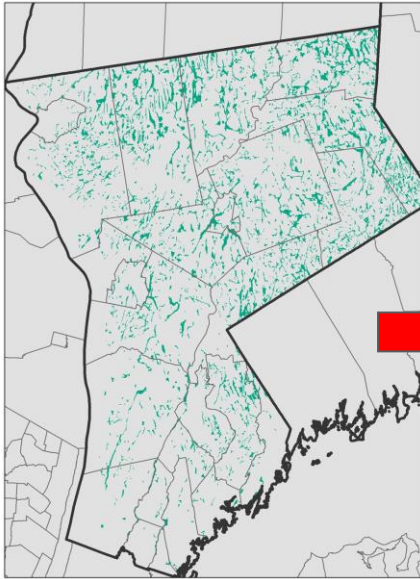
Aquifers



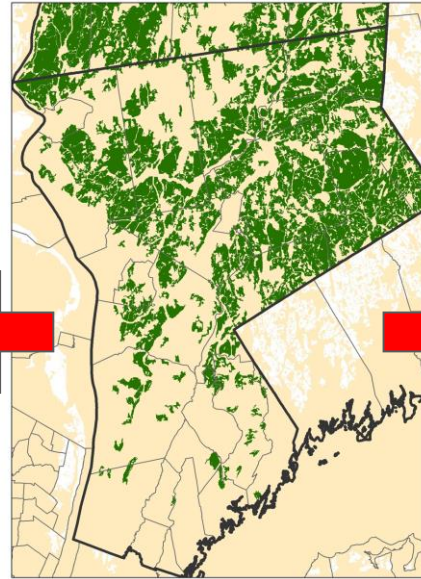
Surface Waters and Buffers



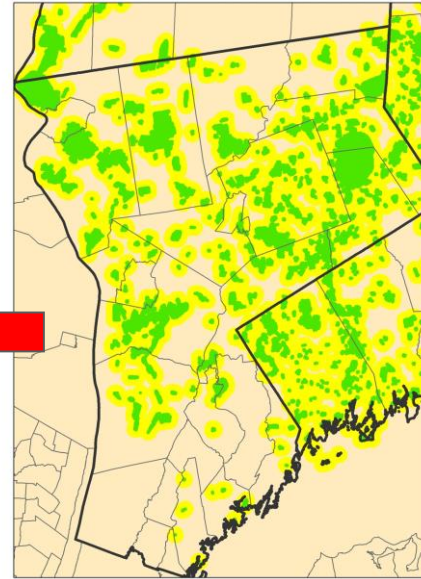
Hydric Soils



Large Forest Blocks



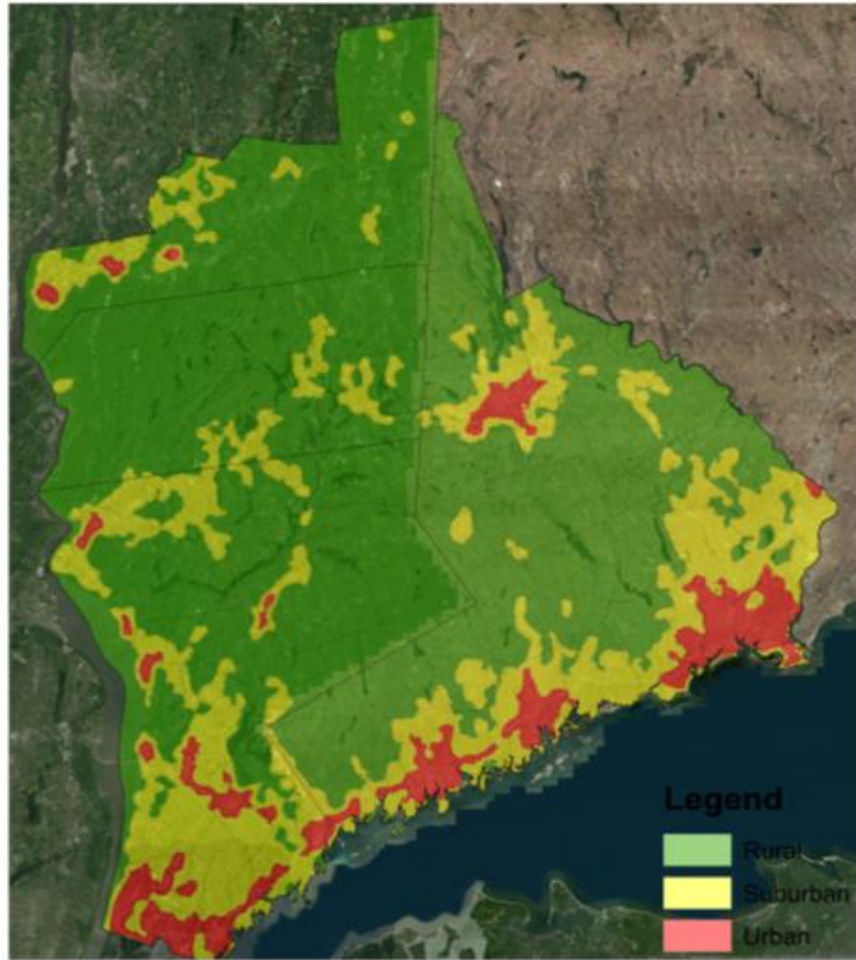
Proximity to Protected Lands





# Conservation Values Checklist

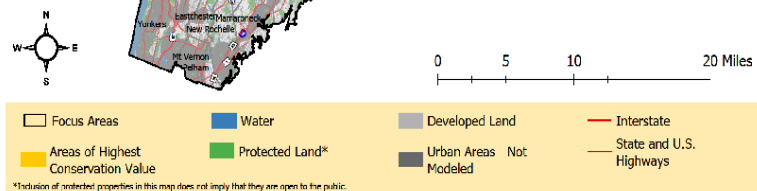
H2H Strategic Conservation Map  
Rural, Suburban, Urban Delineations



- **Rural to Suburban**
- Climate Resilience
- Connectivity
- Protects Public Drinking Water Supply
- Proximity to Protected Land
- Rare Ecological Communities or Species
- Wetlands and Water Bodies

\*urban criteria: determined in conjunction with urban partners





\*Inclusion of protected properties in this map does not imply that they are open to the public.

THIS MAP IS INTENDED FOR INTERNAL CONSERVATION PLANNING USE BY H2H PARTNERS. PLEASE DO NOT DISTRIBUTE.

This Strategic Conservation Map was created by the Hudson River Estuarine Ecosystem Conservation Office (HREECO), a collaboration of nearly all state trusts, municipalities, non-profits, and other entities across a 140-mile Coast and Watershed, Albany, and southern Dutchess Counties in New York. The map identifies land with high conservation value and can help prioritize opportunities for landscape conservation in the H2H region. In order to model conservation priorities, H2H members identified 15 areas that measure the land's ecological value, contributions to healthy water supply, and potential for recreation. 1, each of these 15 criteria were mapped, and land was scored based on the number of criteria that overlapped in any given location. The areas created are "Highland Conservation Value" on this map, represent the top third of lands scored in this manner. The numbered "Hot Areas" represent sub-regions of the landscape where H2H partners are focused or colloquially

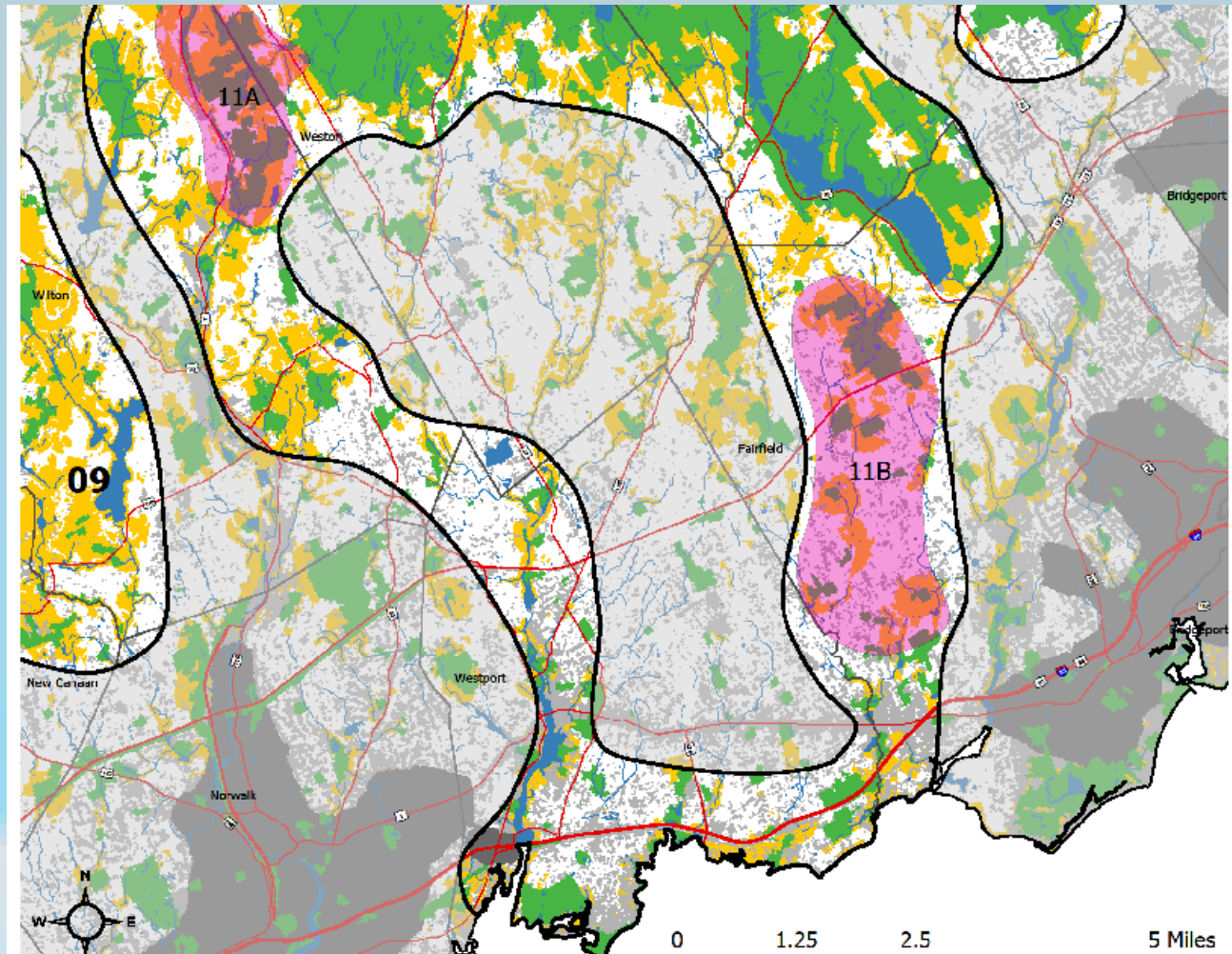
Although this map shows many geographically important areas, it is not intended as a comprehensive representation of LUI values. In particular, this country's urban model does not cover the more densely developed urban areas within the LUI landscape. LUI recognizes the importance of conserving urban land and further understands that criteria for identifying important land within cities will likely differ from the criteria used in non-urban landscapes. LUI will be undertaking future projects, including additional partner engagement and mapping, to identify priorities in urban areas. Similarly, R2H recognizes the value of protecting the major agricultural land, even though agricultural values are not yet included in this map.

Please contact Highstead or Westchester Land Trust for more information on this map or on the Hudson to Housatonic Regional Conservation Partnership.

Map created by Rebecca Rodriguez. Statistics compiled as of 10/26, Aug. 2023.

[illegible]

# New Tools for Collaborative Conservation Planning





**Objective: To coordinate & collaborate towards identified goals through empowering- convening- and engaging**





# RHODE ISLAND **Woodland** PARTNERSHIP

RIWP advances the stewardship and long-term protection of Rhode Island's woodlands to benefit the local economy, ecological values, and community enjoyment and health.

**The RIWP strives to increase the impact of forest conservation measures through information sharing and coordination.**



- Began meeting in 2013
- Covers the State of Rhode Island
- 20 Partner organizations represent:
  - Environmental nonprofits
  - Public agencies
  - Higher education
  - Small businesses
- A networking space for RI's conservation community for issues affecting forests





- Strategic Plan 2017-21
- Industry Focus Group
- Advocacy Efforts:
  - Climate Change
  - Forest Fragmentation
- Advancing Partners Work
- Forestry for RI Birds

## Partnership Projects & Highlights:

### RHODE ISLAND WOODLAND PARTNERSHIP *STRATEGIC PLAN 2017-2021*

JANUARY 1, 2017



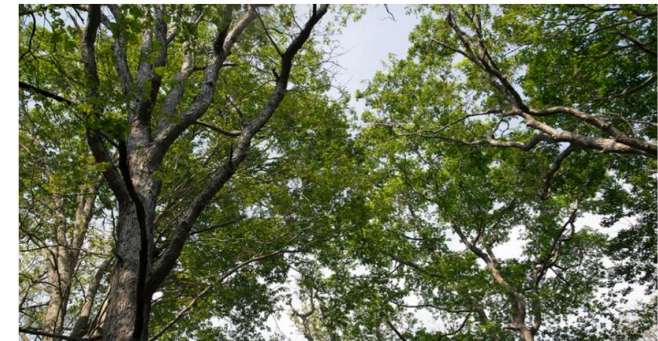
Photos by: Tanner Steeves, Amanda Freitas, RI DEM



This story is brought to you thanks to the generous support of Horsley Witten Group

#### New Partnership Concerned About Forest Fragmentation

February 16, 2017



Get the latest  
ecoRI News  
headlines in  
your inbox.  
Subscribe to  
our free weekly  
newsletter

Opinion

#### My Turn: Development threatens R.I. woodlands

By Christopher Riely

Posted Mar 3, 2018 at 3:00 PM



Those of us who care about and manage the region's woodlands have often heard the statistic that Rhode Island is still heavily forested, with about 55 percent of the state in woodland cover. Add to this the canopy that presents itself in Google Earth from 50,000 feet above our suburban and urban areas, and one would think that there's plenty of woods to provide wildlife habitat, protect water quality, yield forest





# Saco Watershed Collaborative

RCP Network Gathering

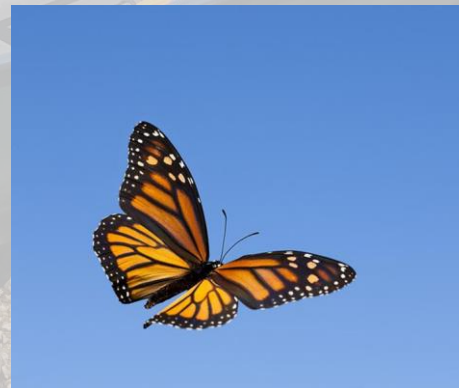
November 13, 2019

Emily Greene

Outreach Coordinator

UNE/Wells NERR/UMaine

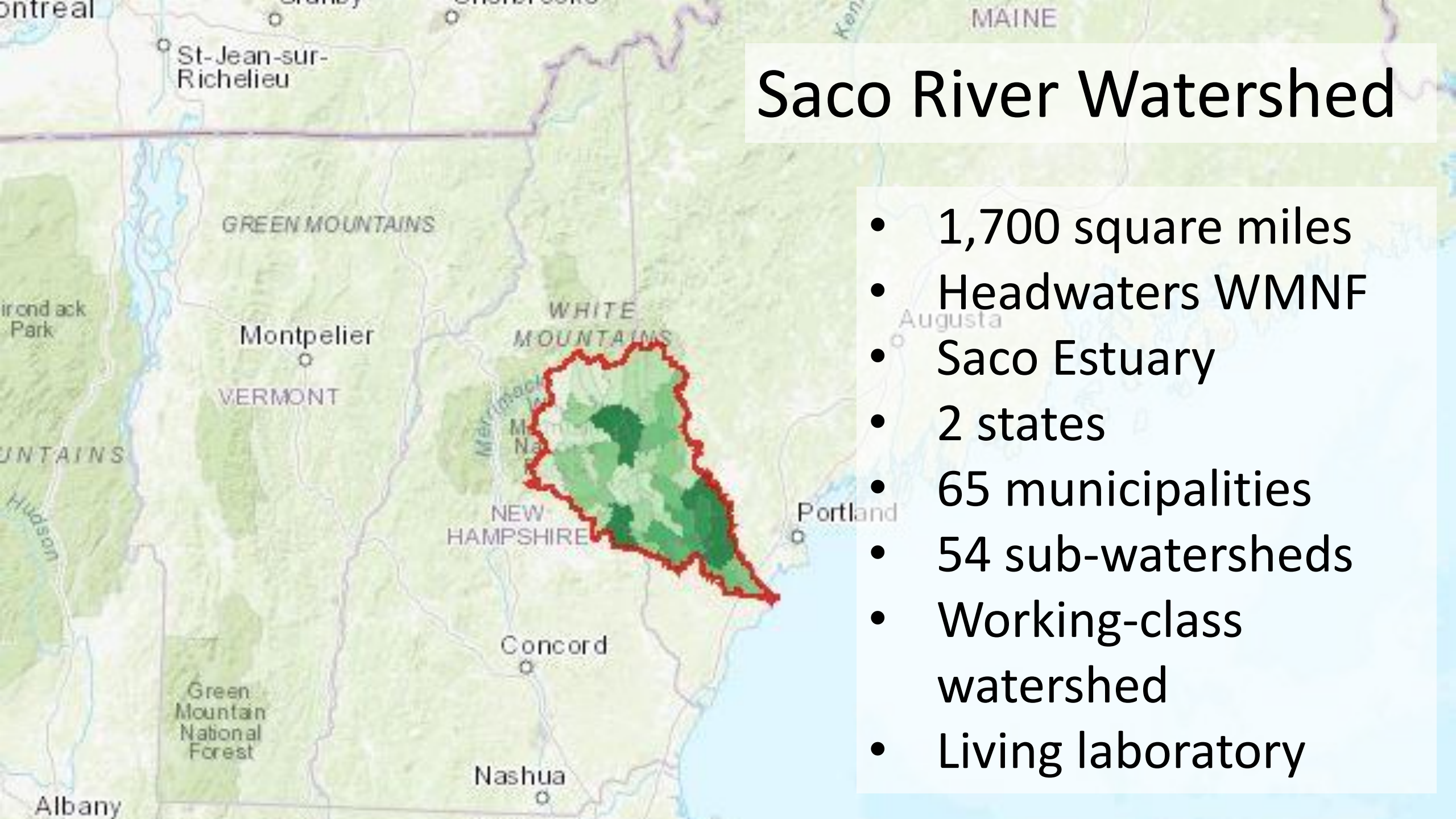
[egreene@une.edu](mailto:egreene@une.edu)





# Saco River Watershed

- 1,700 square miles
- Headwaters WMNF
- Saco Estuary
- 2 states
- 65 municipalities
- 54 sub-watersheds
- Working-class watershed
- Living laboratory





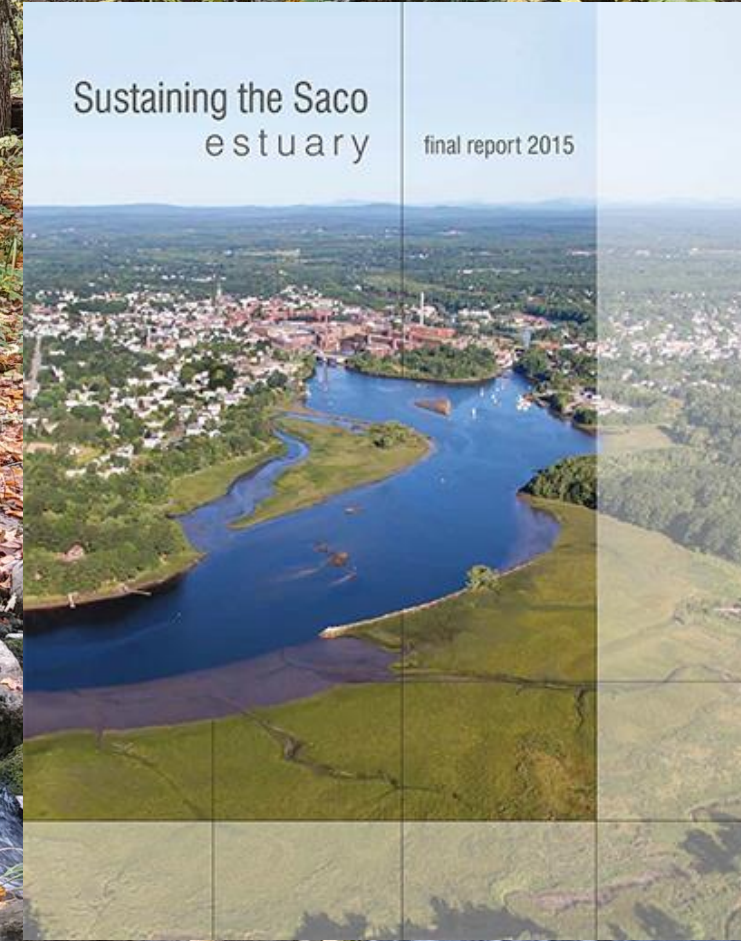
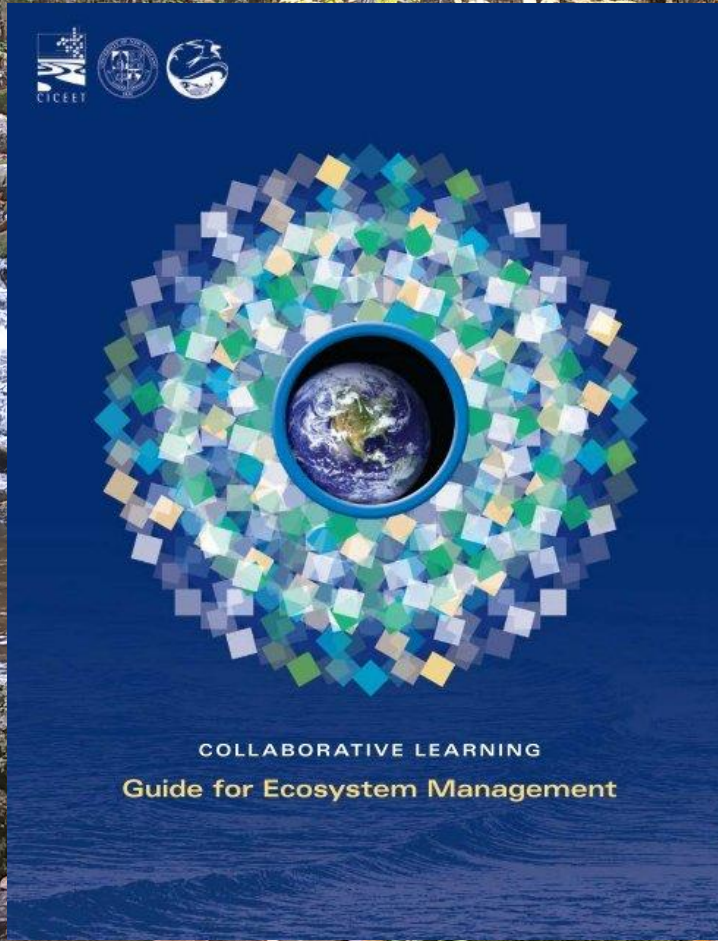
# The Genesis...

## **Collaborative Learning to build stewardship network**

- 2002-2007
- CL Learning Guide

## **Sustainability Science to link social and ecological systems**

- 2009-2015
- What lives in the 5mi Saco Estuary?
- How is the Estuary used?





# Saco Watershed Collaborative 2016

## *Recognizing the Stewardship Network*

**December 2016:**

1. Who are you?
2. What do you do?
3. What are your values and perceptions of the Saco Watershed?
4. How can being a part of a Collaborative help you achieve your organization's goals?





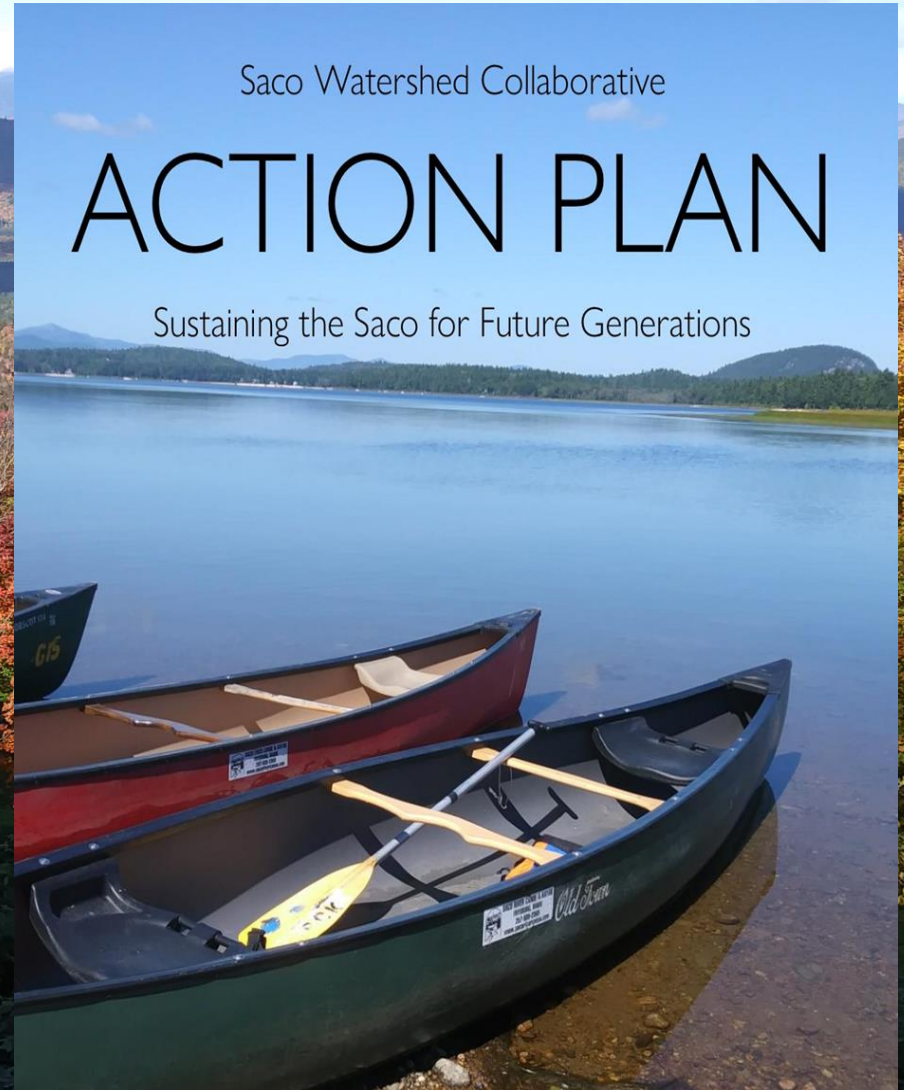
# Saco Watershed Collaborative

## 2016 to Present

### Collective Impact Approach

1. **Common Agenda** → SWC Action Plan with 4 AS
2. **Shared Measurement** → Action Plan proposes shared measurement goals, guiding principles
3. **Mutually Reinforcing Activities** → Field trips and meetings
4. **Continuous Communication** → Basecamp, emails, phone calls, social media
5. **Backbone Organization** → UNE and Steering Committee, sub-committees

Google: Sanford Review Collective Impact  
[https://ssir.org/articles/entry/collective\\_impact](https://ssir.org/articles/entry/collective_impact)





# Sustaining the Saco for Future Generations

## 1. Sustainability Science in the Saco Watershed

- Knowledge is shared/created collaboratively
- Considers linked SES's
- Motivated by sense of urgency
- Engages non-scientists and LEK
- Integrates natural and social sciences
- Focused on Knowledge to Action

## 2. CL engages all Expertise

- Understanding Mental Models of your audiences, meet them where they're at
- Who needs to be at the table?

## 3. Collective Impact Approach

## 4. Collaborative Learning

- Iterative process





## Exercise 1-2-4:

5 mins self  
5 mins pairs  
5 mins quads

*What aspects of the panelists' stories align with your organization's current state? Why?*

*Were there any "aha" moments?*

*How might you incorporate these insights into your work?*