

The Massachusetts Regional Conservation Forum



Wellesley College
February 8, 2019

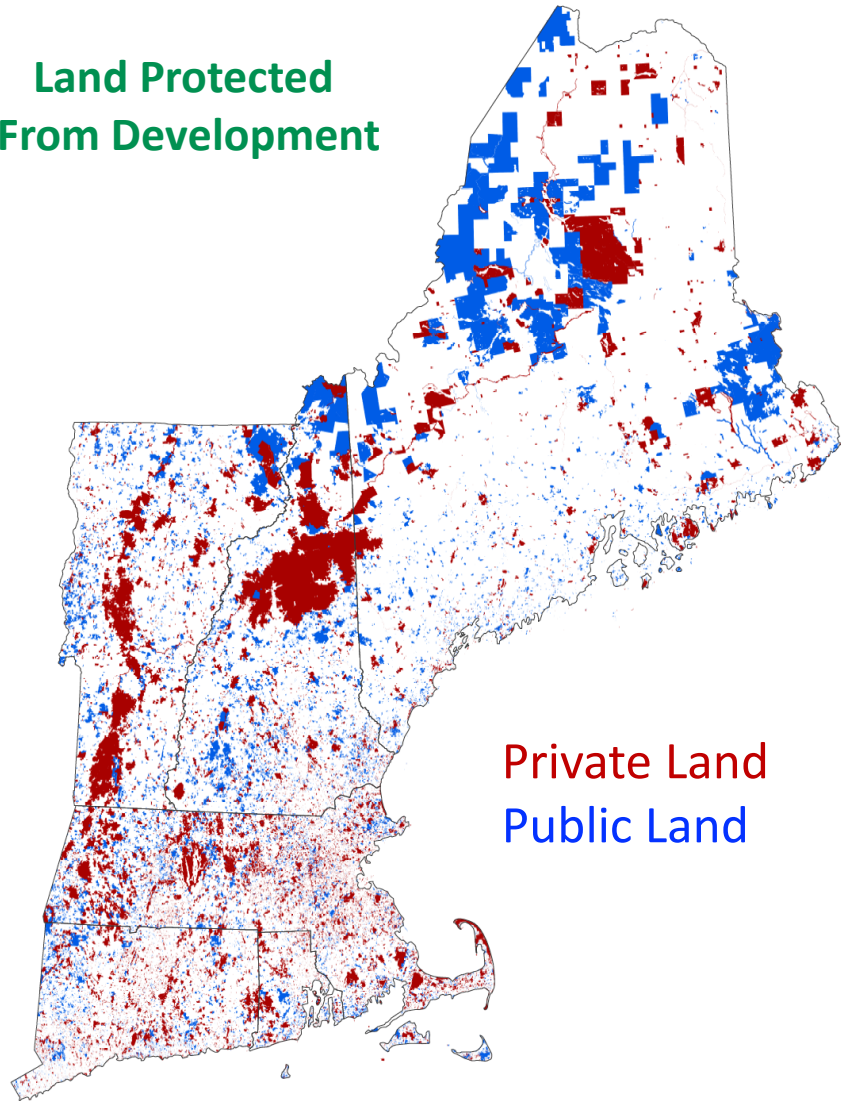
ALPINE

To advance the role that academics play in conserving the New England landscape



9.4m acres are protected from development

Land Protected
From Development



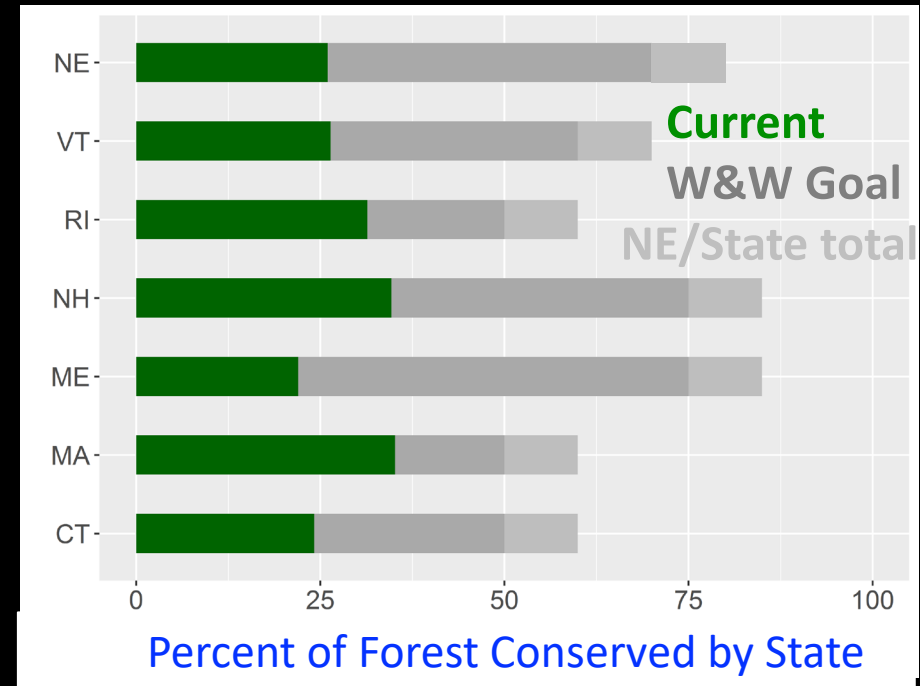
50 mi.

N

Public
Private

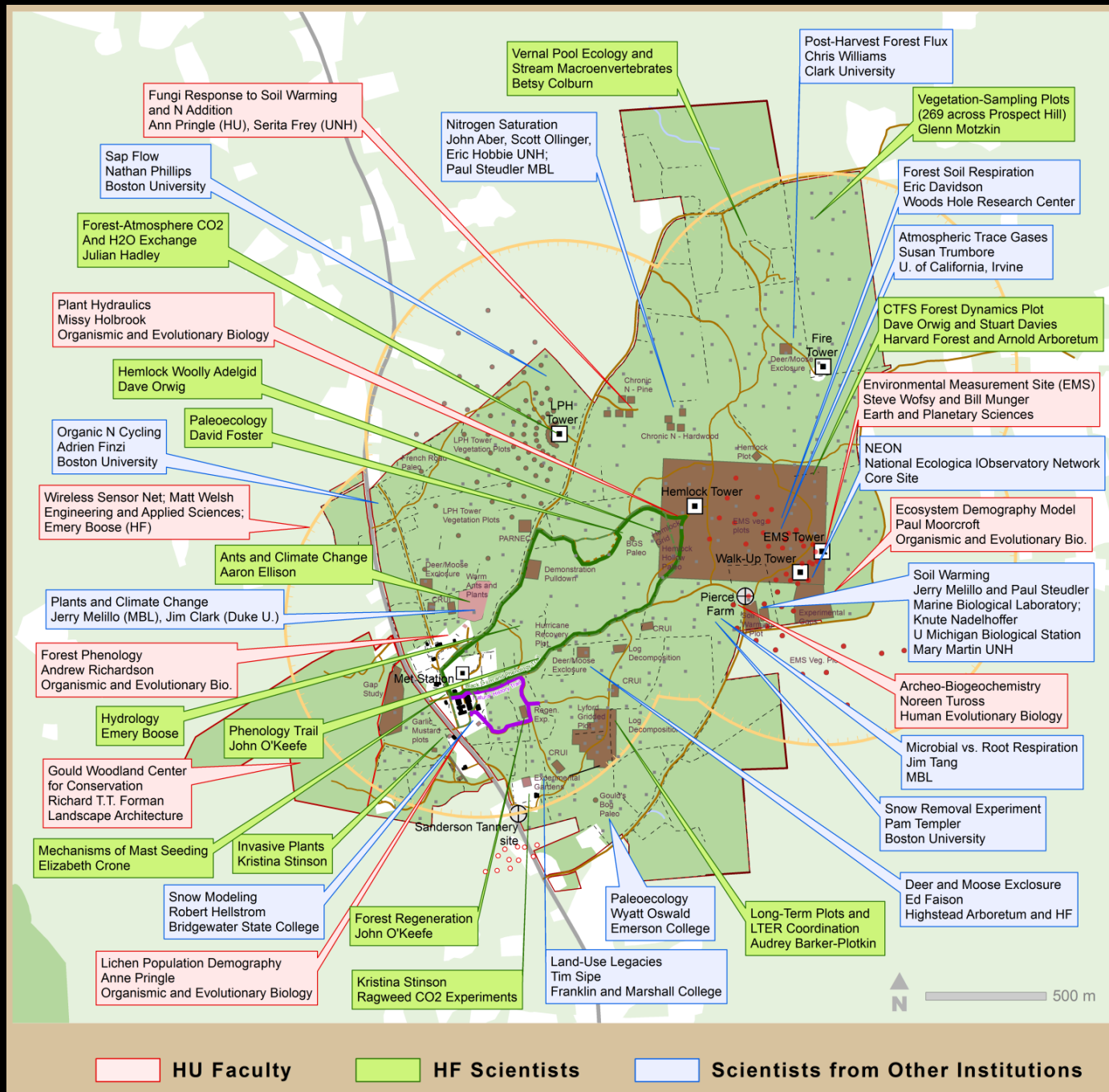
50% Since 1990

73% by easement since 1990



Benefits to faculty, students, administration

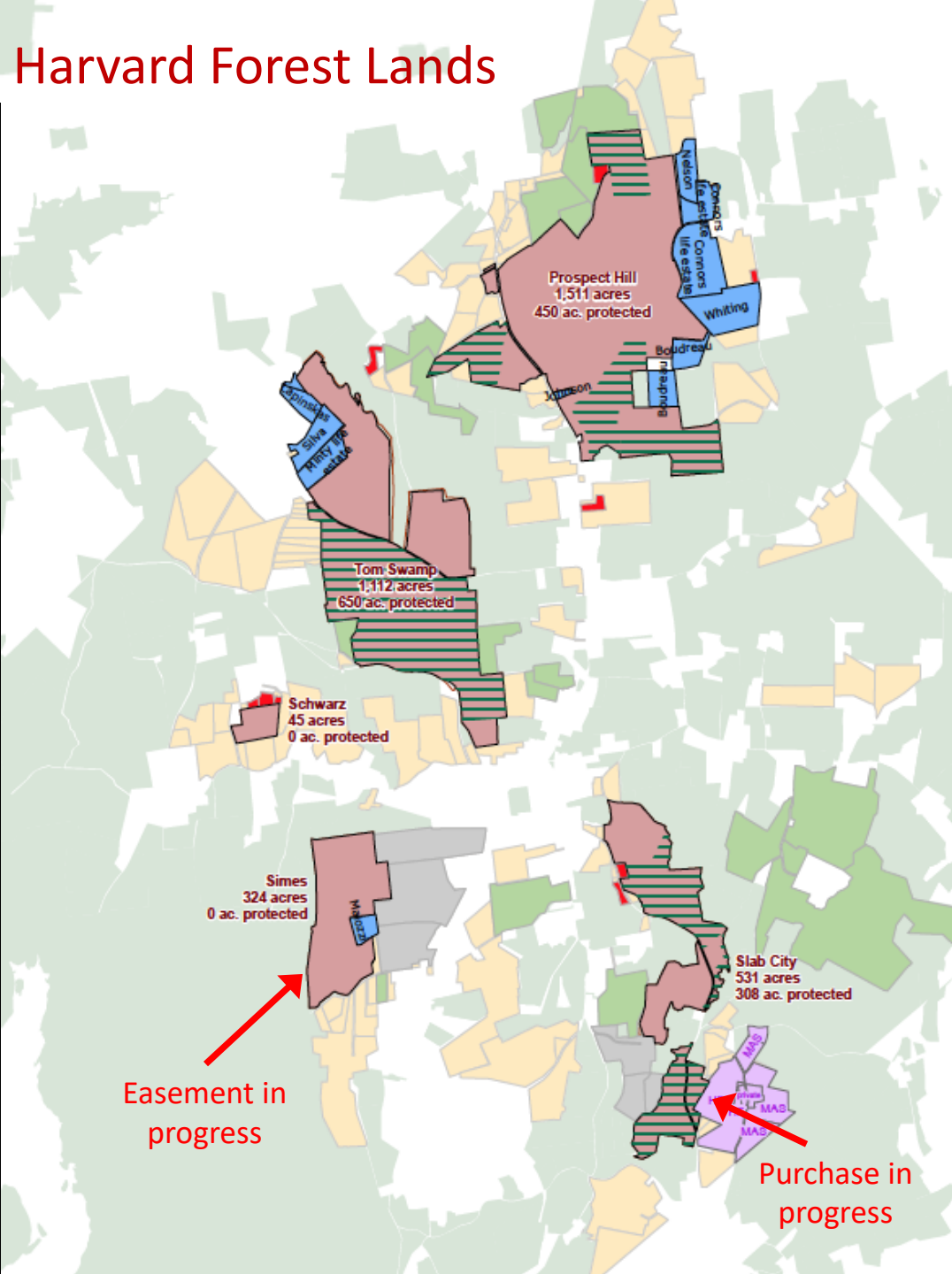
- Land Acquisition and Protection by Institution.
 - (1) Protect land base by conserving adjoining land.
 - (2) Purchase land inexpensively.
 - (3) Place easements on our land. Familiarize the university with land protection.
 - (4) Increase endowments through conservation restrictions.
- Research access. Both access to additional lands and securing new lands.
- Research opportunities. Future scenarios, decision-making, economic analysis.
- Research Funding. *Broader impacts*. Applications of science and research to management and decision making. *Educational activity*.



Research At the Harvard Forest

Prospect Hill Tract

Harvard Forest Lands



Status of Land Protection Efforts Harvard Forest 2017

Total Land Holdings 3,841 acres

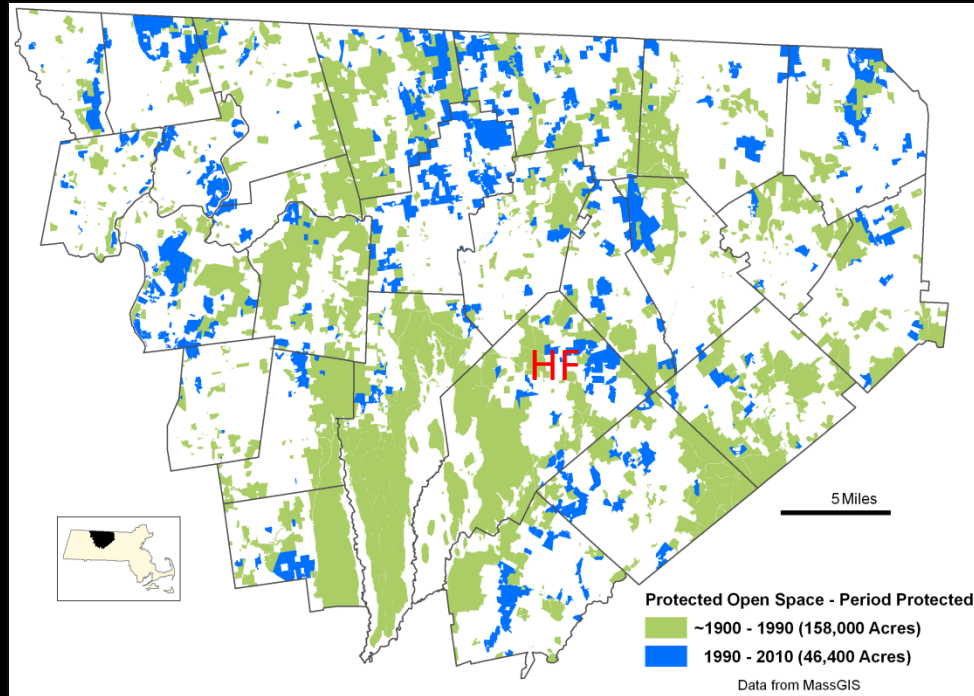
Protected 1,841 acres

48%

- HF Properties With Conservation Restrictions (CRs)
- HF Tracts
- HF Priorities To Protect
- Butterworth Project
- Other Priority Lands
- Other Priority Lands That We Expect Other Agency/Org To Protect

- Previous Priority That Was Developed
- Previous Priority That Was Protected
- Protected Lands (Not HF-Owned)

North Quabbin Regional Landscape Partnership



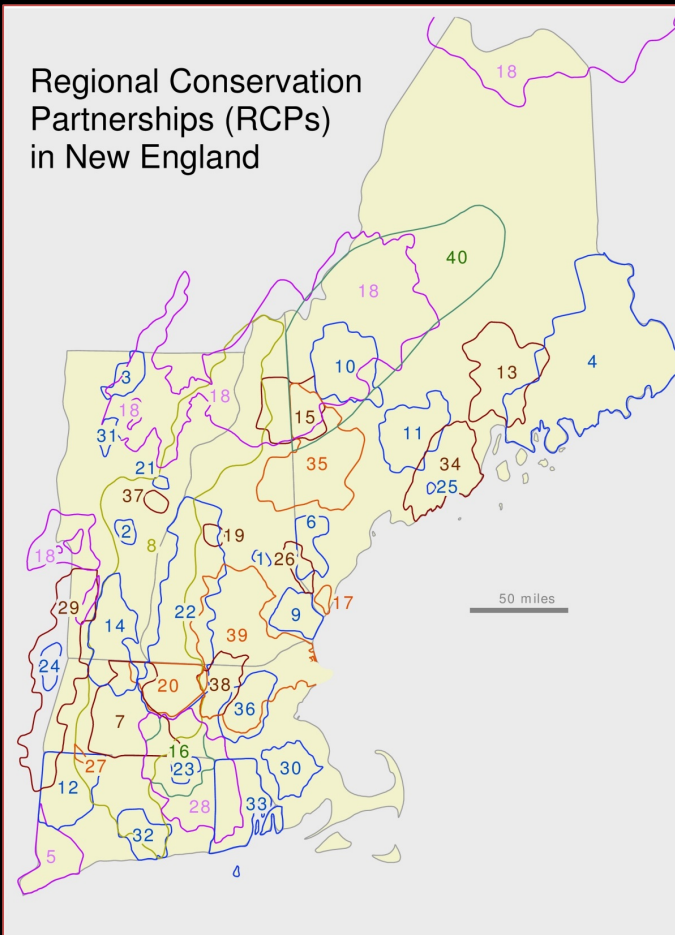
Founded in 1997

- 26 towns
- 22 Active partners
- Full-time coordinator since 2006
- Protected over 5,700 acres since 2006
- Outreach and training to land owners, foresters, towns etc.

History and Importance of Land Use and Protection in the North Quabbin Region of Massachusetts (USA)

ALISA D. GOLODETZ* AND DAVID R. FOSTER†
Harvard Forest, Harvard University, Petersham, MA 01366, U.S.A.

Conservation Biology, Pages 227-235
Volume 11, No. 1, February 1997



Current Projects

- Internship advancing regional partnership in the Pioneer Valley
- Harvard College Conservation Society -- N Appalachian Trail initiative
- New course at Harvard – *Conservation Ecology and Practice*
- Economic impacts of conservation – Thompson, Nolte, Simms, Meyer
- New England Landscape Dynamics – Climate, land use, disturbance

Land Protection at Harvard University – 25-years and counting



Four Deans, Office of General Counsel, Three Presidents
Two Land Trusts, the Commonwealth
Donors and Friends
Willing Abutters
Keith Ross