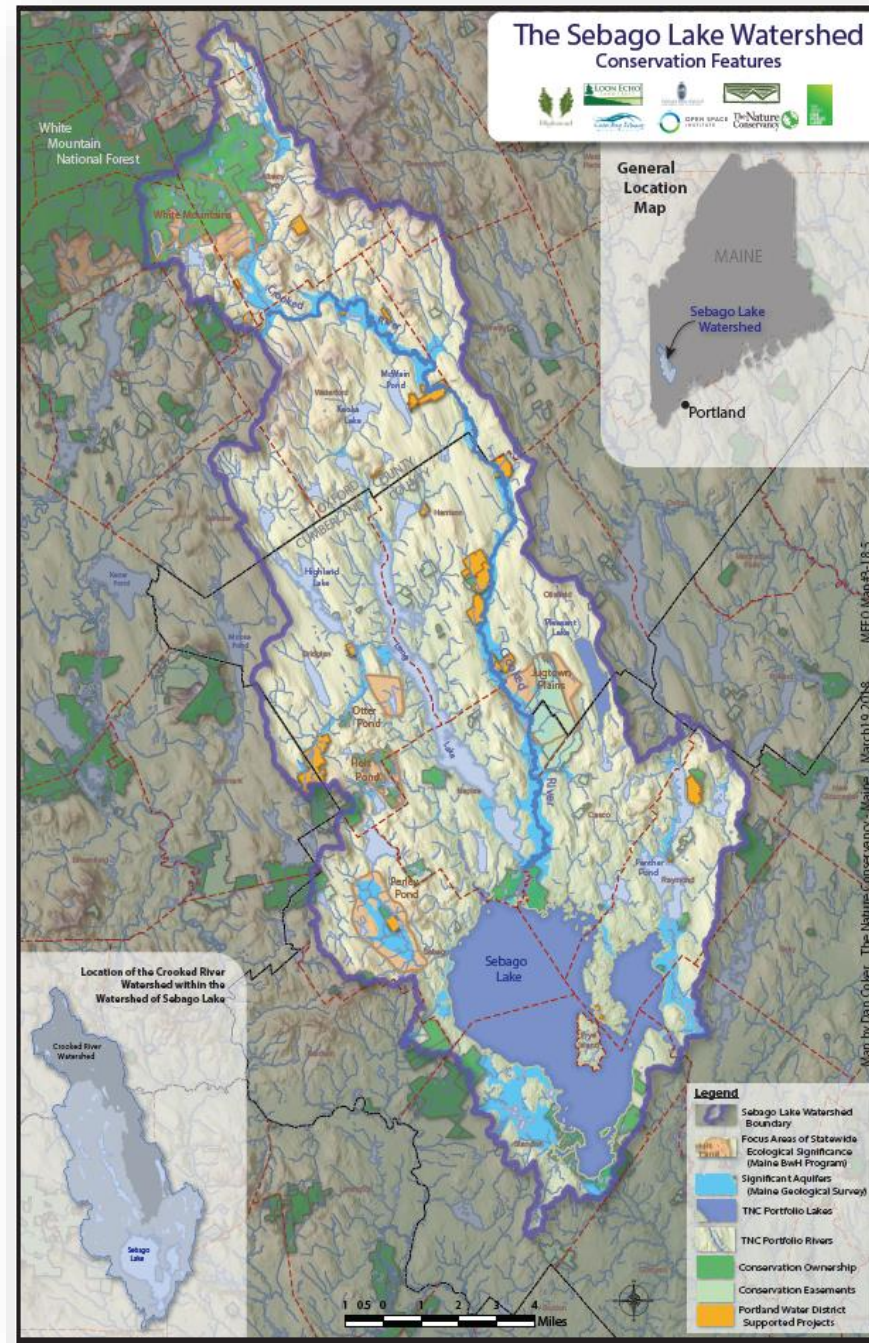




Pam Wells Photo

The Partners

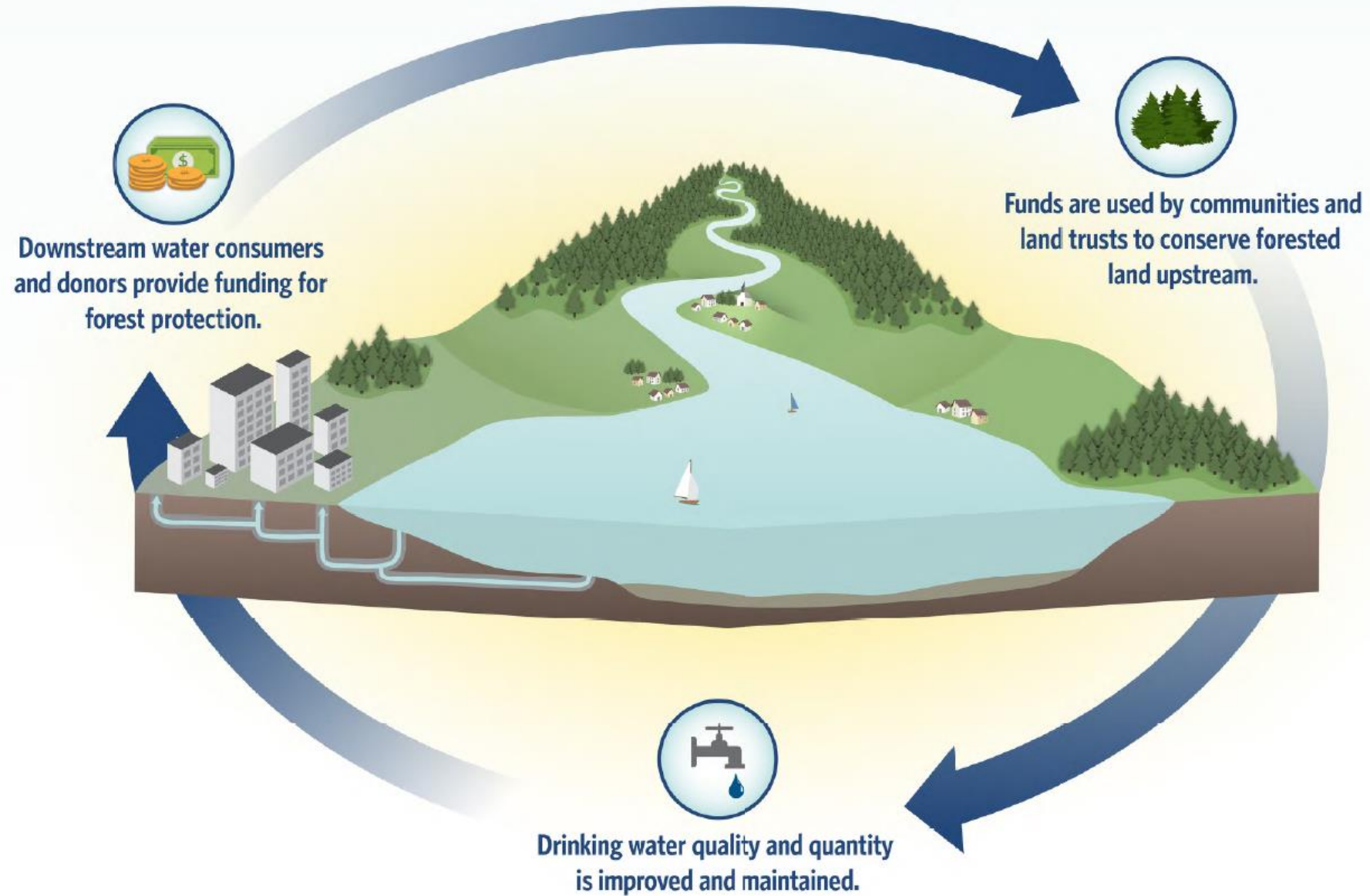


The Watershed

- Municipal water source since 1869
- Supplies water to 1/6 of Maine's population and its fastest growing businesses
- EPA Filtration Avoidance Waiver
- Portland Water District is a quasi-municipal non-profit
- 6.5B gallons in 2016
 - 52% residential users
 - 22% largest water users



WATERFUNDS AT WORK



Developing the Water Fund

- Conservation Planning
- Interviews with Beneficiaries
- Economic/Business Case
- Community Engagement
- Short-term Funding
 - Partners
 - Anonymous foundation
 - Allagash Brewing Co.
 - US Endowment | EPA | NRCS
- Mid-term Funding
 - State water revolving funds
 - Foundation R&D or capital investments
 - Breweries and other businesses



Can We Make the Business Case on Water Alone?

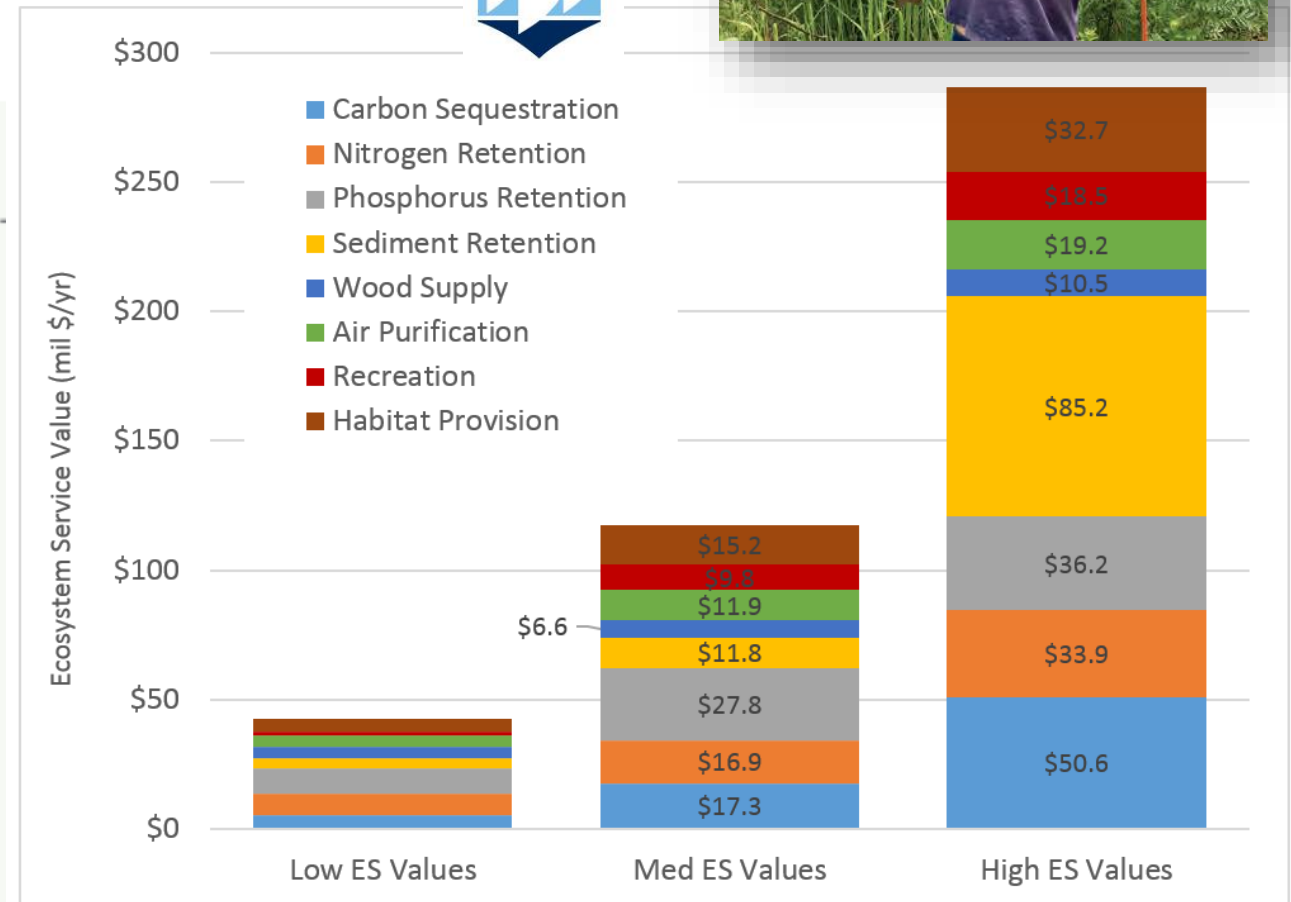
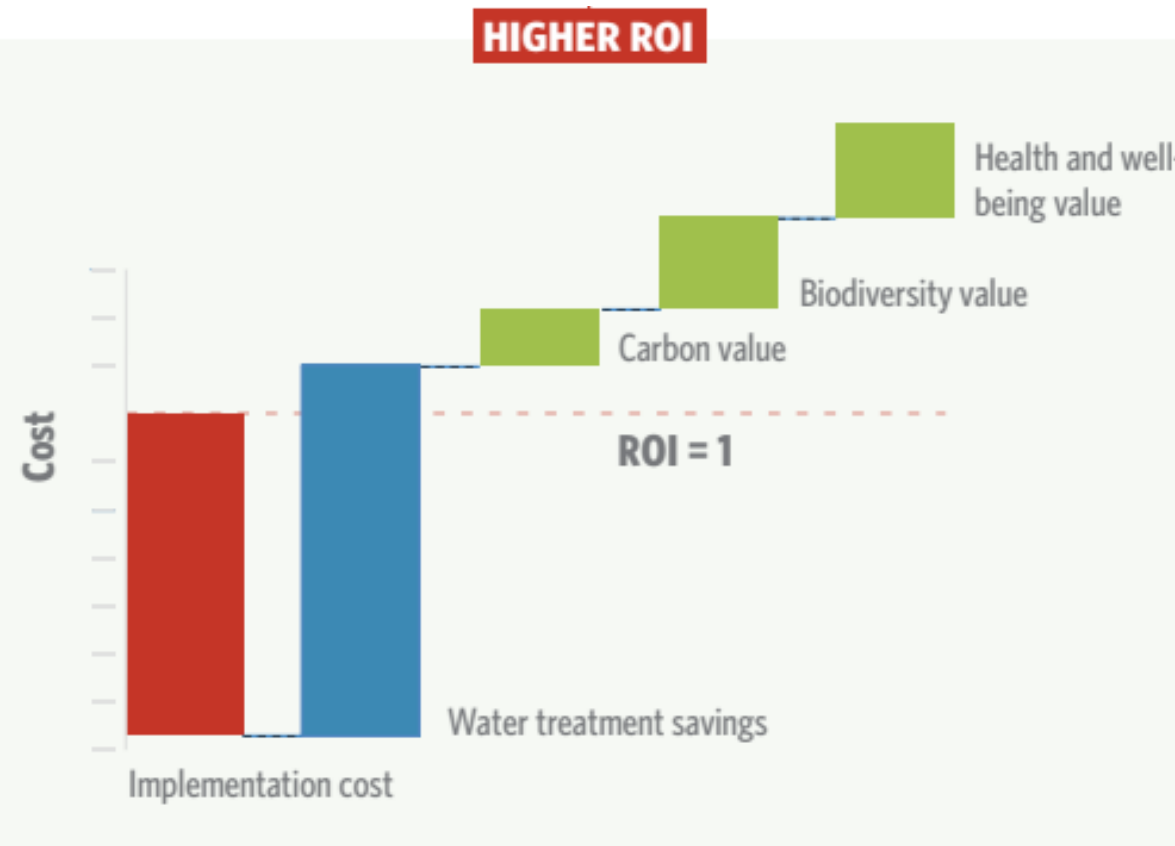
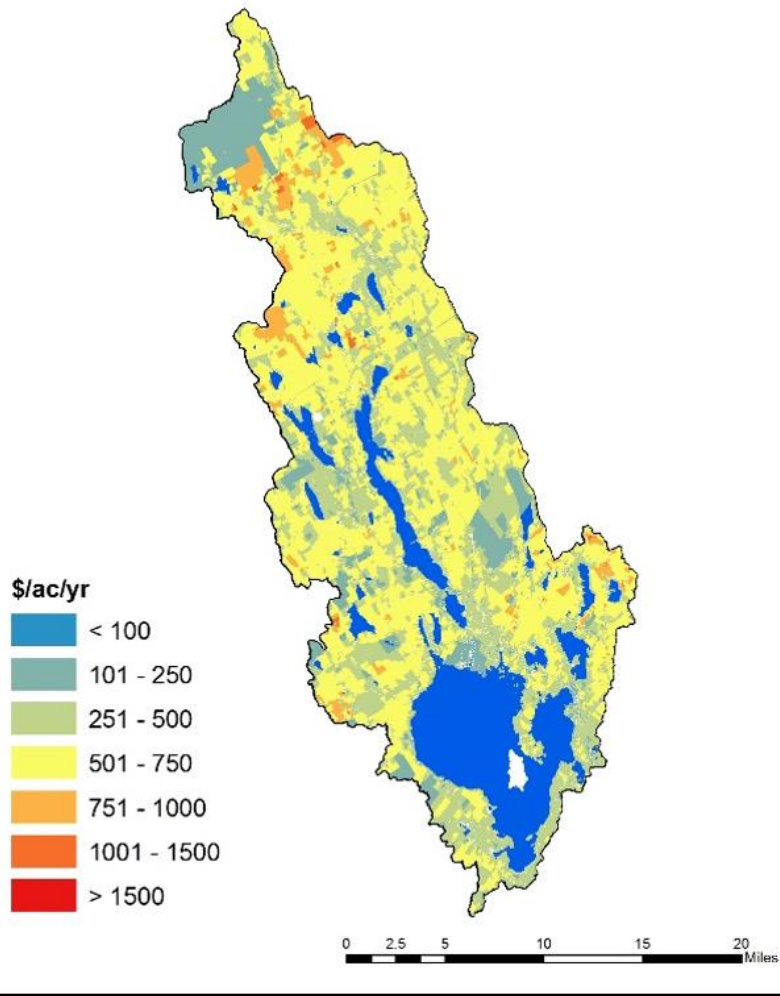
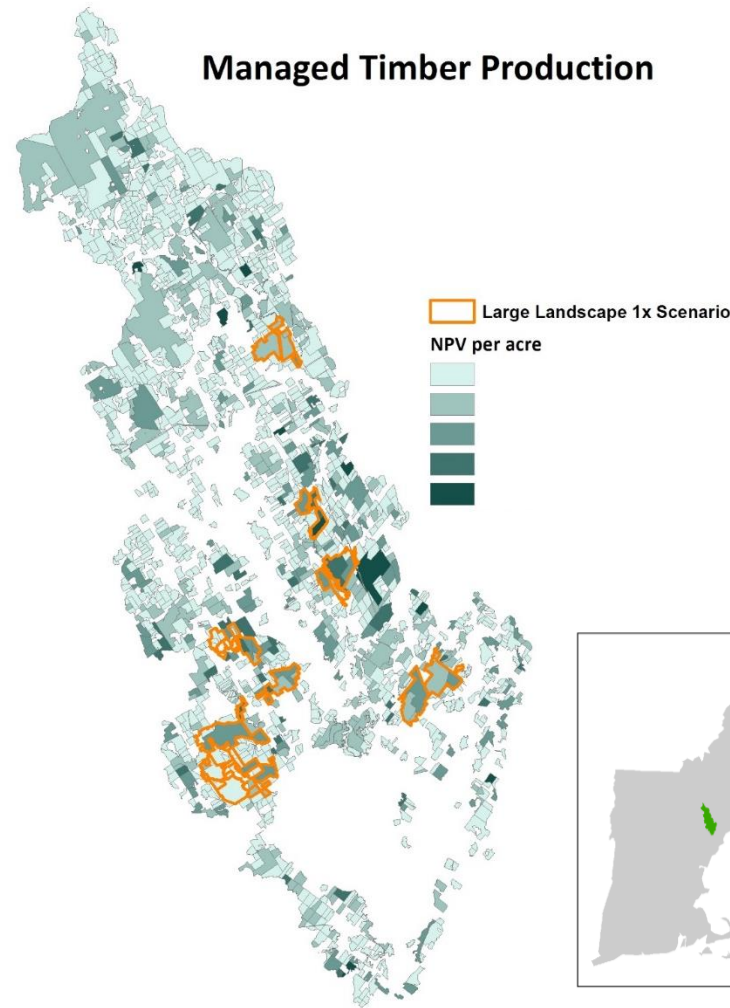


Figure 8. Estimated total annual ecosystem service value of current forestland area in the Sebago Lake Watershed

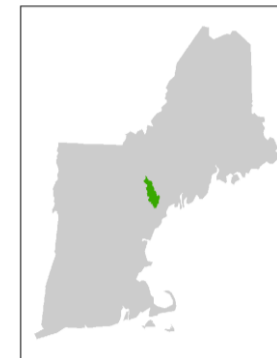
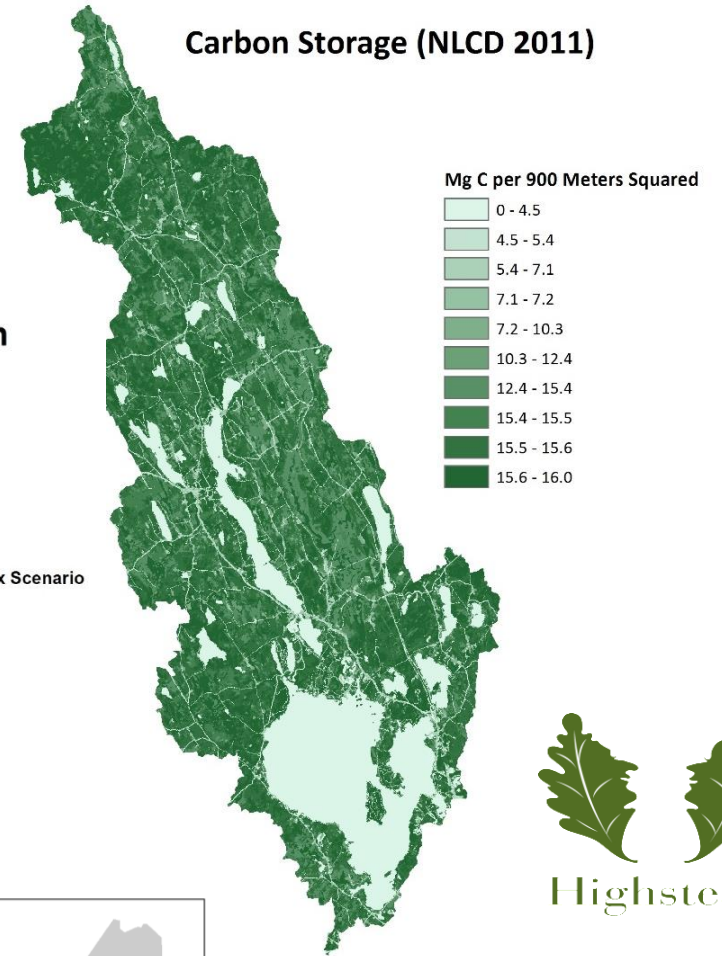
Aggregate Forest Benefits



Managed Timber Production



Carbon Storage (NLCD 2011)



Yale SCHOOL OF FORESTRY & ENVIRONMENTAL STUDIES

By the [DRAFT] numbers

- \$1 invested in conservation yields \$4.80 - \$8.90 in net benefits
- Losing 8% of the forest cover could trigger minimum 40% increase in sediment and nutrient pollution.
- Would require \$150M treatment plant => \$13M/yr capital costs
- Water rates could increase 84% or \$2.4M/yr for top 50 users.
- These savings could protect ~2,000 ac/yr
- A \$15M water fund could finance 25% protection goal in 10-15 years.



Mainebiz

MAINE'S BUSINESS NEWS SOURCE

HOME NEWS CURRENT EDITION LISTS & DATA OUR E

TODAY'S HEADLINES HOW TO'S OPINION POLLS LISTS

f in t Print Email Order a PDF

MARCH 30, 2018

Brewers' 'silent partner': Portland Water District honored for protecting Sebago watershed



COURTESY - MAINE COAST HERITAGE TRUST



It all starts with leadership...



smeyer@Highstead.net



www.SebagoCleanWaters.org

