



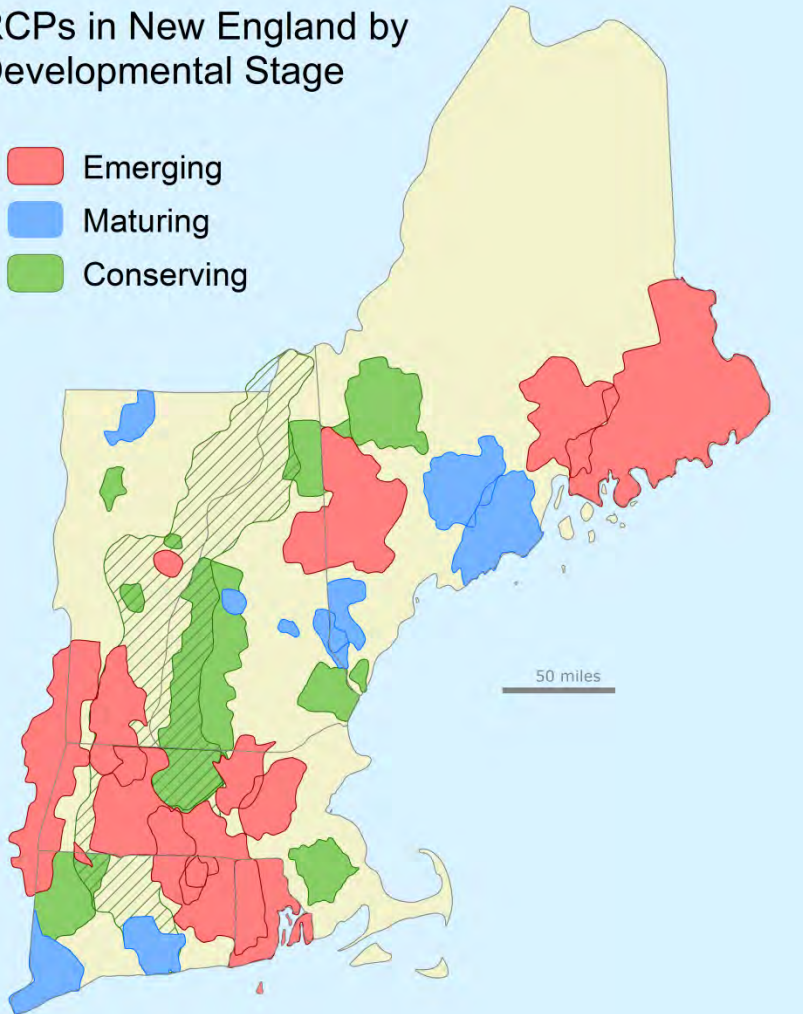
2014 RCP Network Gathering

**November 13, 2014
Crowne Plaza Hotel - Nashua, NH**

Emerging RCPs: Organize & Build Trust

RCPs in New England by Developmental Stage

- Emerging
- Maturing
- Conserving

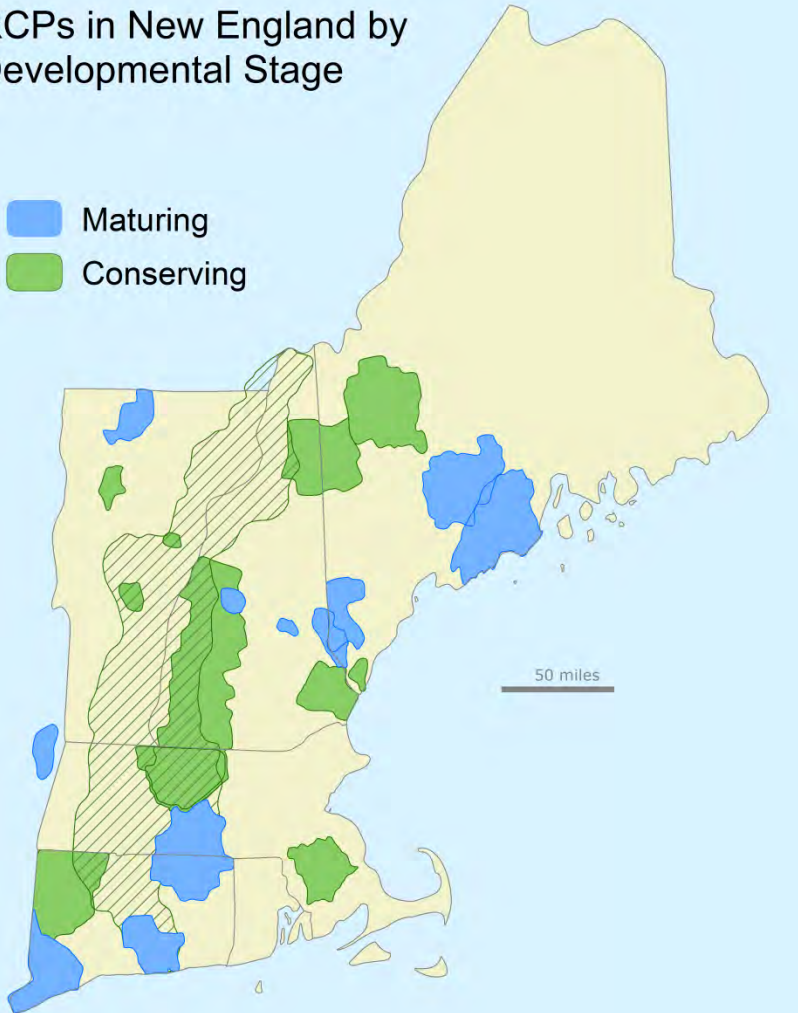


- Step 1: Convene partners, pick region & coordinator
- Step 2: Meet in-person to:
 - craft mission, objectives, website
 - build trust
 - form a steering committee & working groups
 - learn from peer RCPs

Maturing RCPs: Build Partners Through Collaboration

RCPs in New England by Developmental Stage

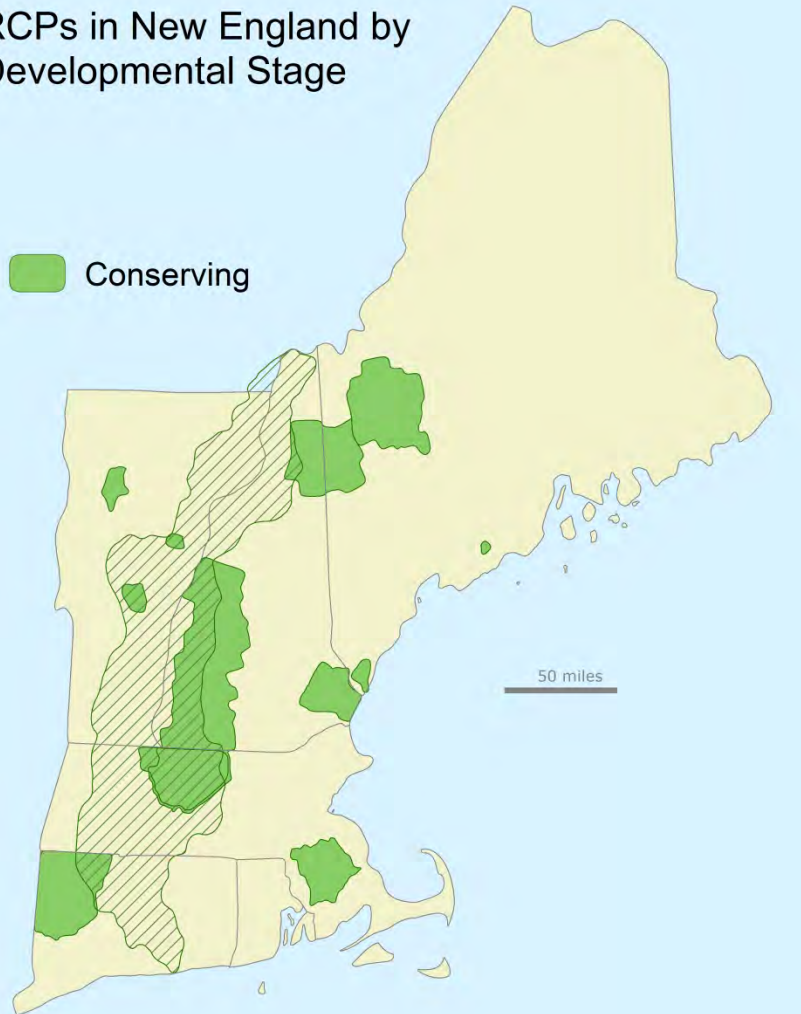
- Maturing
- Conserving



- Step 3: Help partners grow
- Step 4: Mapped strategic conservation vision w/ priority areas
- Step 5: Strategic action plan
- Step 6: Peer-to-peer networks of informed stakeholders in region
- Step 7: Engage state & federal partners outside region

Conserving RCPs: Collaborate to Raise Funds and Conserve Land

RCPs in New England by Developmental Stage



- Step 8: Compelling case statement
- Step 9: Raise funds and conserve land as an RCP
- Step 10: Manage changes in leadership, funding, region, partners, etc.



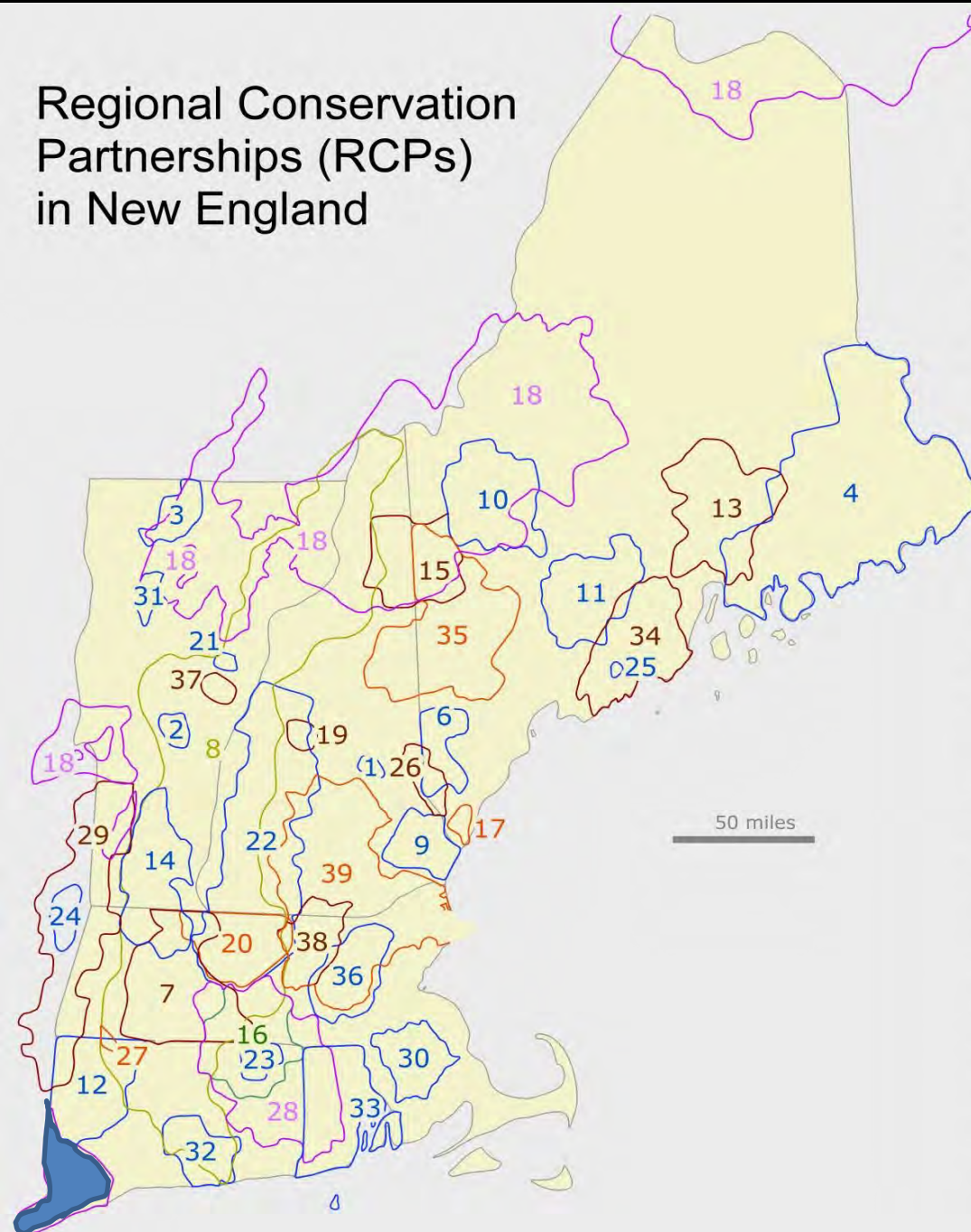
2014 RCP Network Gathering

**November 13, 2014
Crowne Plaza Hotel - Nashua, NH**

THE FAIRFIELD COUNTY REGIONAL CONSERVATION PARTNERSHIP

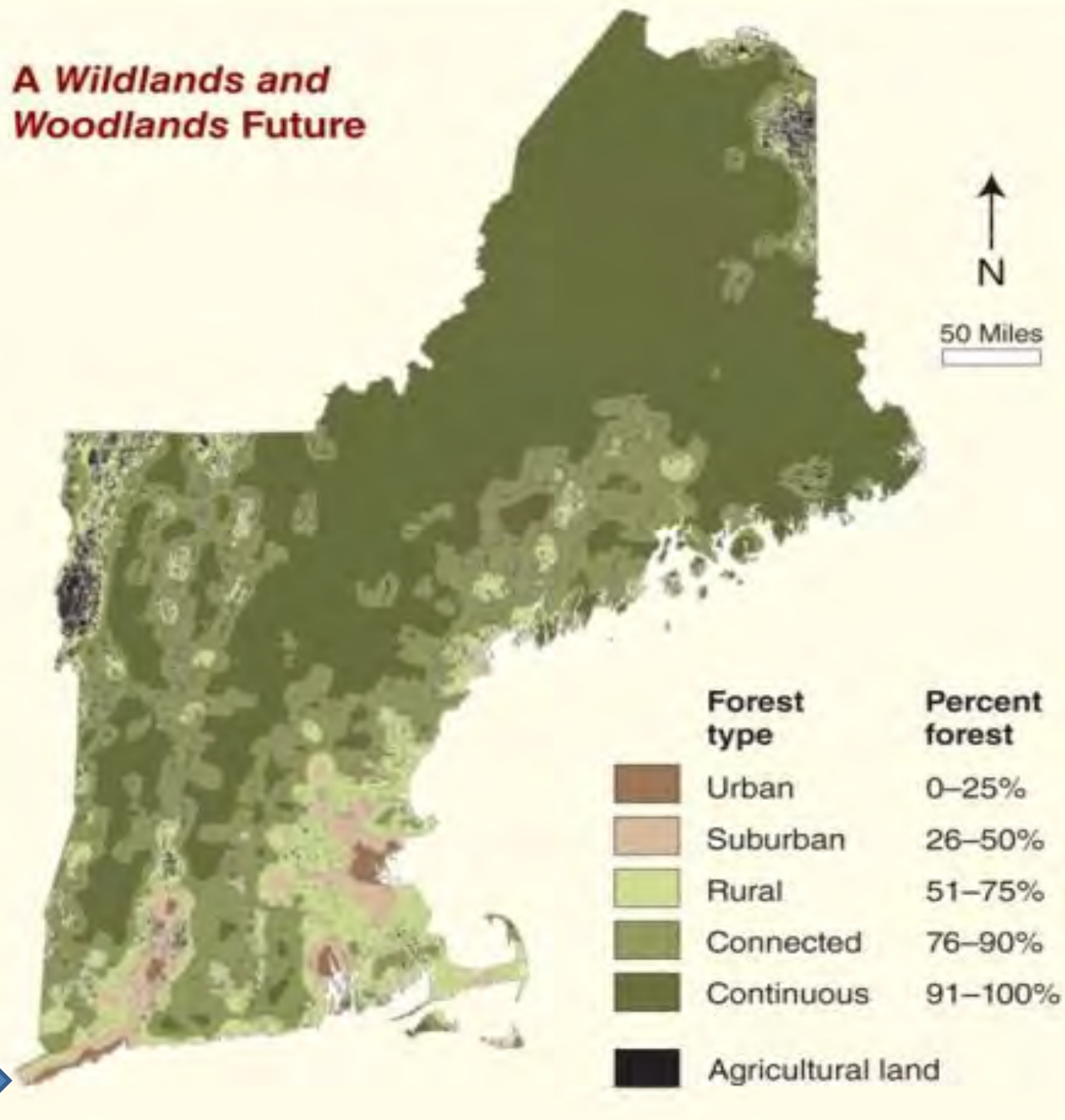
AN EMERGING/MATURING
COLLABORATION

Regional Conservation Partnerships (RCPs) in New England



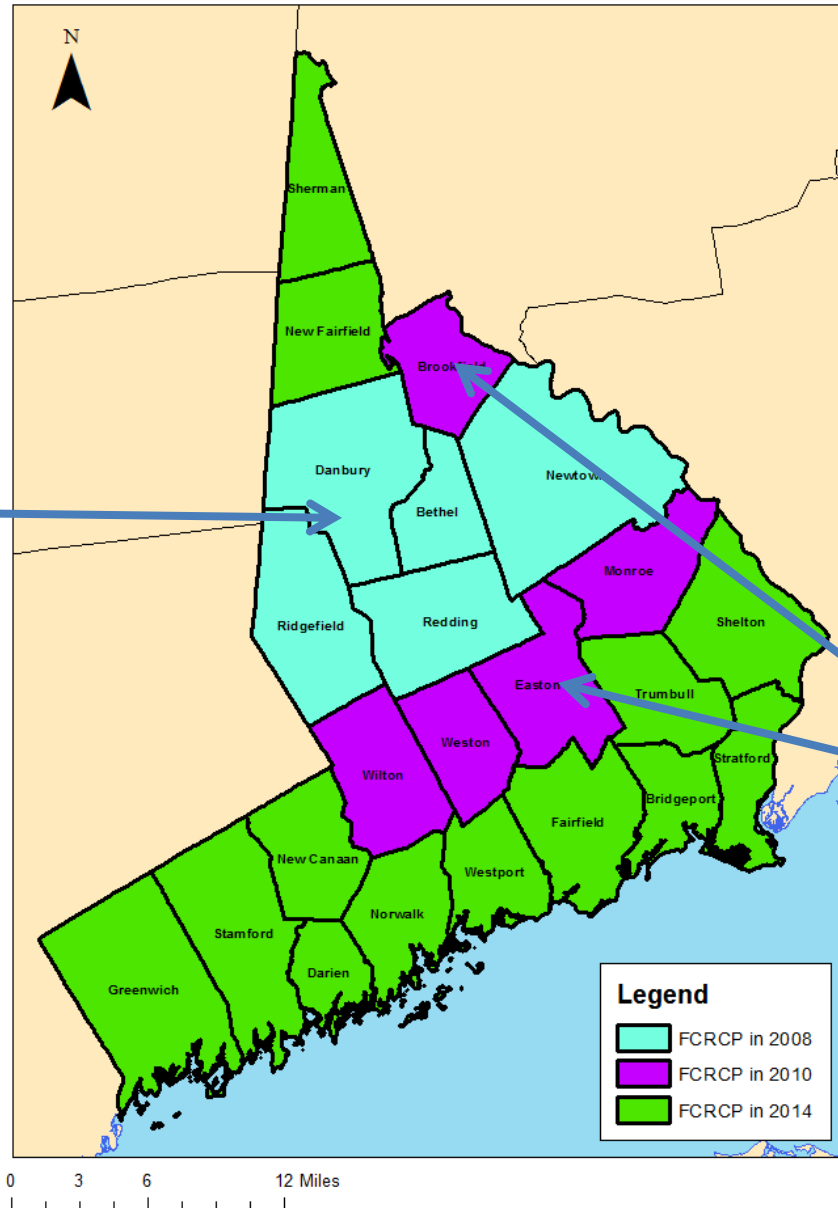
- 1 Belknap Range Conservation Coalition
- 2 Chateaugay Notown Conservation Project
- 3 Cold Hollow to Canada Forest Link Project
- 4 Downeast Research and Education Network
- 5 Fairfield County Regional Conservation Partnership
- 6 Forest Works!
- 7 Forever Farmland Initiative
- 8 Friends of the Silvio O. Conte National Fish and Wildlife Refuge
- 9 Great Bay Resource Protection Partnership
- 10 High Peaks Initiative
- 11 Kennebec Woodland Partnership
- 12 Litchfield Hills Greenprint Collaborative
- 13 Lower Penobscot Watershed Coalition
- 14 MA-VT Woodland Partnership
- 15 Mahoosuc Initiative
- 16 Mass-Conn Sustainable Forest Partnership
- 17 Mt. Agamenticus to the Sea Conservation Initiative
- 18 Staying Connected Initiative
- 19 Newfound Land Conservation Partnership
- 20 North Quabbin Regional Landscape Partnership
- 21 Orange County Headwaters Project
- 22 Quabbin to Cardigan Partnership
- 23 Quiet Corner Initiative
- 24 Rensselaer Plateau Alliance
- 25 River Link
- 26 Salmon Falls Watershed Collaborative
- 27 Sandy Brook Conservation Corridor
- 28 Southern New England Heritage Forest Partnership
- 29 Taconics Landscape Partnership
- 30 Taunton River Coalition
- 31 The Chittenden County Uplands Conservation Project
- 32 The Lower Connecticut River and Coastal Region Land Trust Exchange
- 33 The RI Woodland Partnership
- 34 Twelve Rivers Collaborative
- 35 Upland Headwaters Alliance
- 36 West Suburban Conservation Council
- 37 Taylor Valley Conservation Project
- 38 Nashua River Forest Partnership
- 39 Merrimack Conservation Partnership

A Wildlands and Woodlands Future



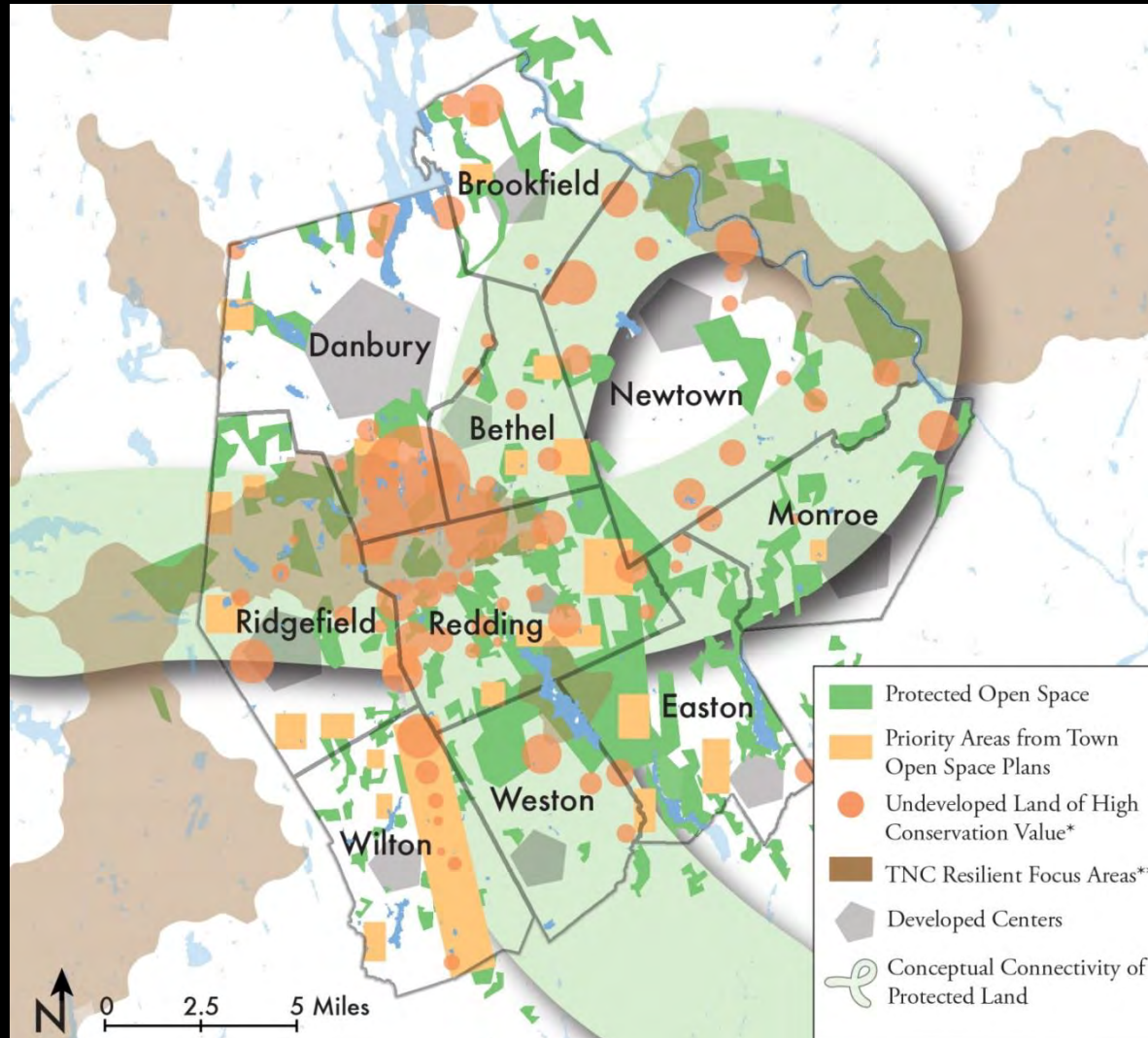
Fairfield County Regional Conservation Partnership Over Time

5-TOWN
REGION
2008-10



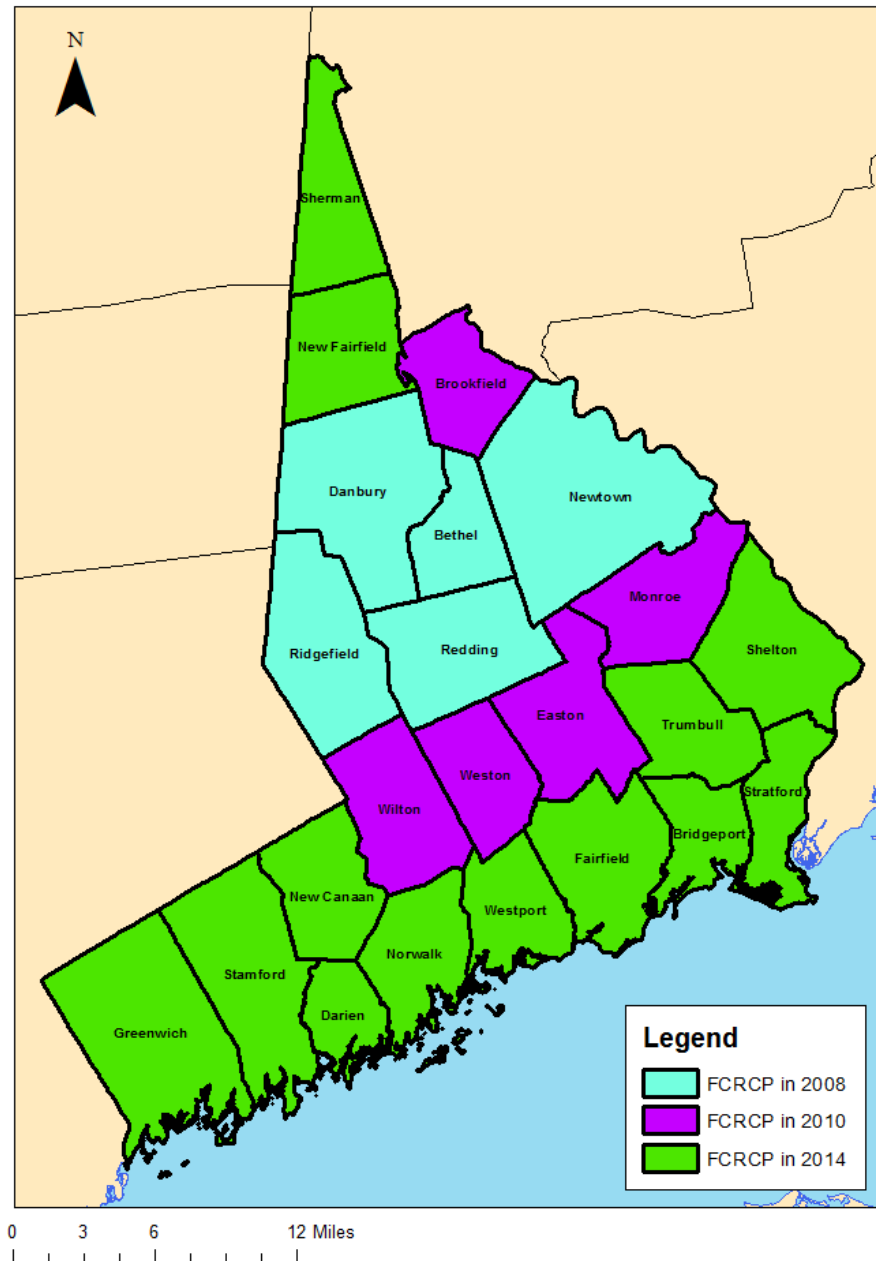
FCRCP
ADDS 5
MORE
TOWNS IN
2010 –
2012

A VISION OF CONNECTIVITY ACROSS NORTHERN FAIRFIELD COUNTY



Fairfield County Regional Conservation Partnership Over Time

In 2013 THE
FCRCP BECOMES
COUNTY-
WIDE



Fairfield County Regional
Conservation Partnership
2013 Planning

FCRCP Full Partnership

Approve SAP
Process.
Review
Mission
Get feedback
on SC Vision,
& SWOT
Analysis

May

FORUM
Approve
Vision & Goals
Give Input &
Prioritize 4-6
Action Areas
&
Measureable
Objectives
For each

July

Approve Action
Areas and Give
Feedback and Input
on Implementation
Plans
Partners to Self-
identify
Who will do what,
with whom, by
when

September

Approve
Imple-
mentation
Plan

Late October

FCRCP Steering Committee

Agree on
Process

March

Draft Vision &
Goals.
Perform
S.W.O.T.
Analysis:
Strengths,
Weaknesses,
Opportunities,
And Threats

April

Finalize
Draft
Vision.
Draft Goals.
Develop
Draft: 6-8
Action
Areas &
Objectives

June

Finalize Action
Areas

Develop a Draft
Detailed
Implementation
Plan for each
Action Area

July/August

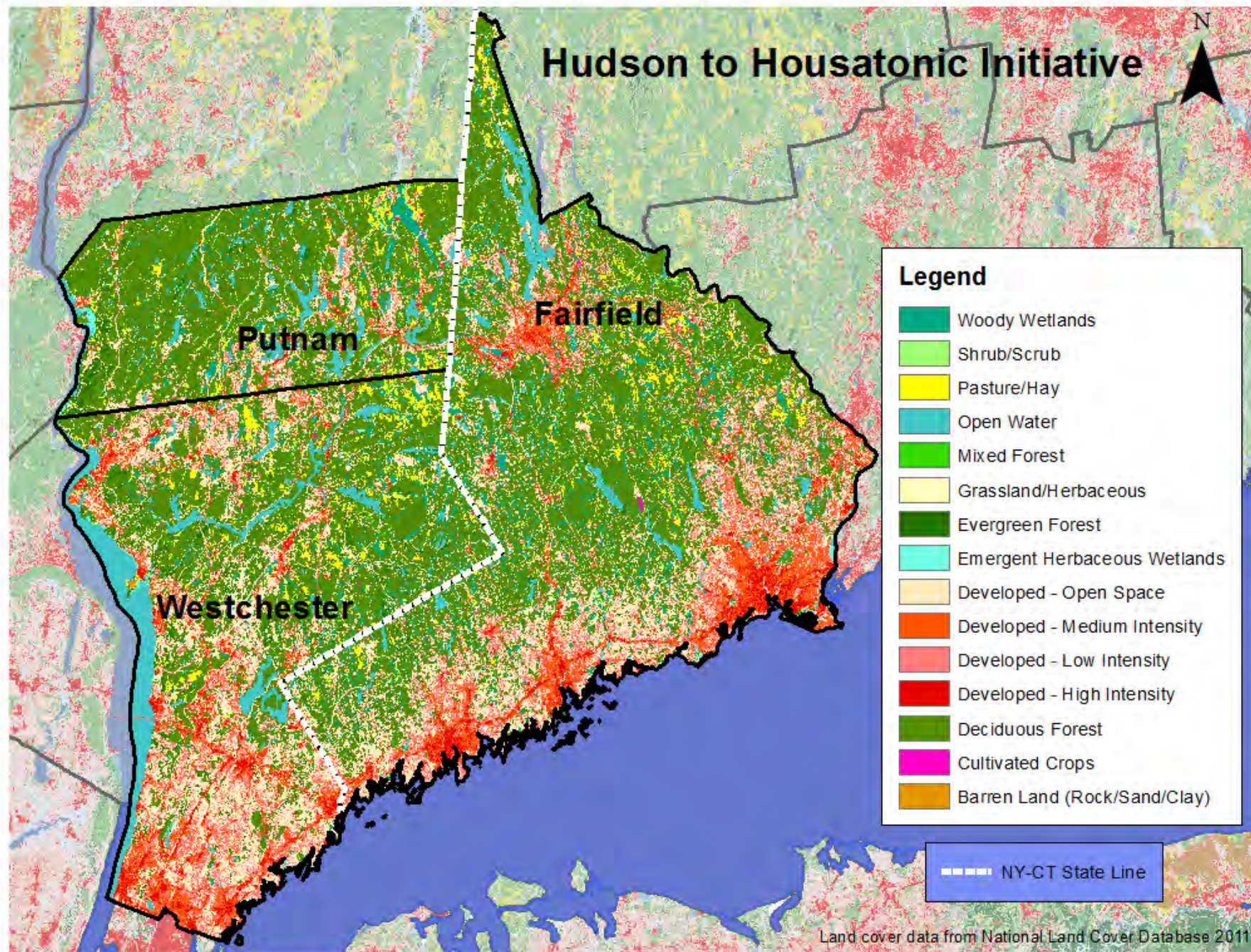
**Finalize Imple--
mentation Plan:**
ID Needs and
Opportunities
To Achieve the
Implementation
Plan

September
/October

Produce
/Publish the
formal
Strategic
Plan
document
for
distribution

Mid-
November

Hudson to Housatonic Initiative



Case study of the Salmon Falls Watershed Collaborative

Anna H. Boudreau, RCP Network Gathering, November 13, 2014

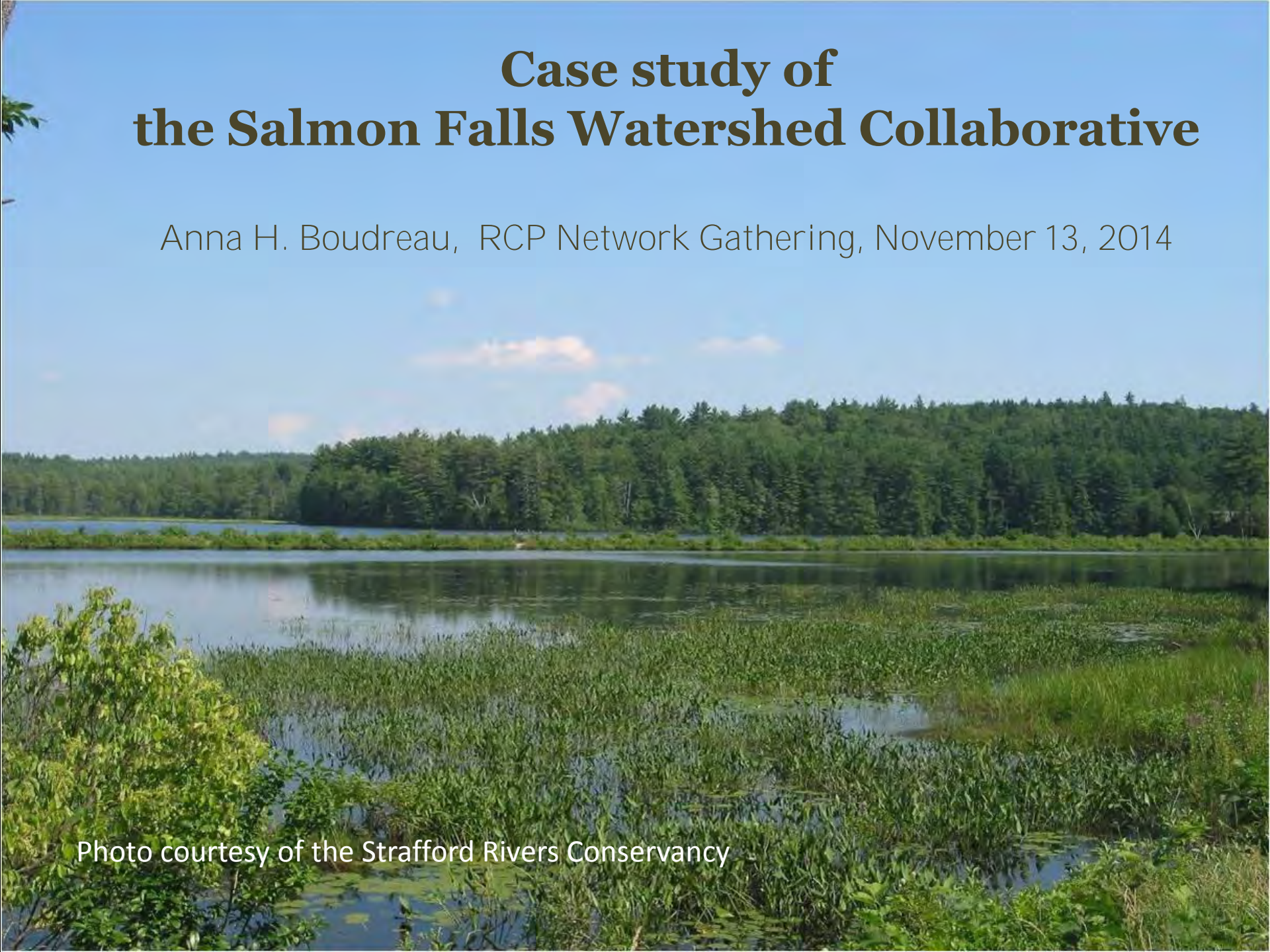


Photo courtesy of the Strafford Rivers Conservancy



*Collaborating with organizations and professionals
to evaluate and resolve land and water resource issues*



:: 454 Court Street :: Suite 304 :: Portsmouth, NH 03801 :: (603) 766-6670 :: www.truslowrc.com

SERVICES



Hydrology, Geomorphology & Restoration



Groundwater & Surface Water Quality Sampling



Land Conservation Planning & Project Management



Natural Resource Planning & Management



GIS Mapping & Analysis



Hydrogeology & Source Water Protection

NACD Source Water Collaborative Toolkit Goals:

Promote source water protection through agriculture conservation practices, stormwater and forest management

Help connect those working on state/local drinking water protection projects with conservation districts



Source Water Collaborative

www.sourcewatercollaborative.org



❖ 25 national organizations united to protect America's drinking water at the source – in the lakes, rivers, streams and aquifers we tap for drinking purposes.

❖ Formed in 2006 with the goal to combine the strengths and tools of a diverse set of member organizations to act now, and protect drinking water sources for generations to come

❖ Salmon Falls Watershed Collaborative selected by the Source Water Collaborative as a pilot project in 2009



Your Water.
Your Decision.



WHERE
SAFE WATER
BEGINS

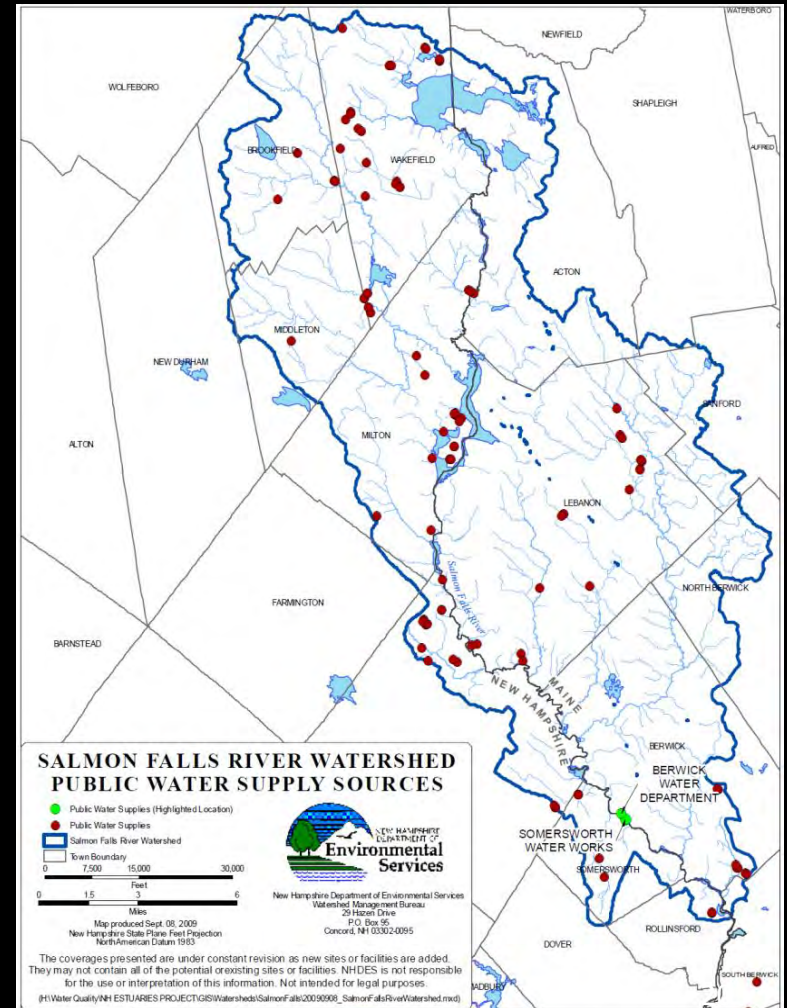
Case Study of
the Source
Water
Collaborative:

The Salmon
Falls River
Watershed
Collaborative



Project Location and Background

- Project area is a 330 square mile watershed in Maine and New Hampshire
- Source of drinking water for 47,000 people in two states



Project Overview and Timeline:

2009:

- ✓ Source Water Collaborative (SWC) selects Salmon Falls as pilot project
- ✓ \$6,000 in “seed money” matched by \$20,000 in state funding
- ✓ Steering committee formed

2010 & 2011

- ✓ One-day workshop held to identify watershed priorities
- ✓ Action Plan written
- ✓ High priority/low \$ actions implemented

2012 – present

- ✓ Other priority action items underway

SALMON FALLS WATERSHED COLLABORATIVE ACTION PLAN

**Working to Protect Clean Drinking
Water for Future Generations**

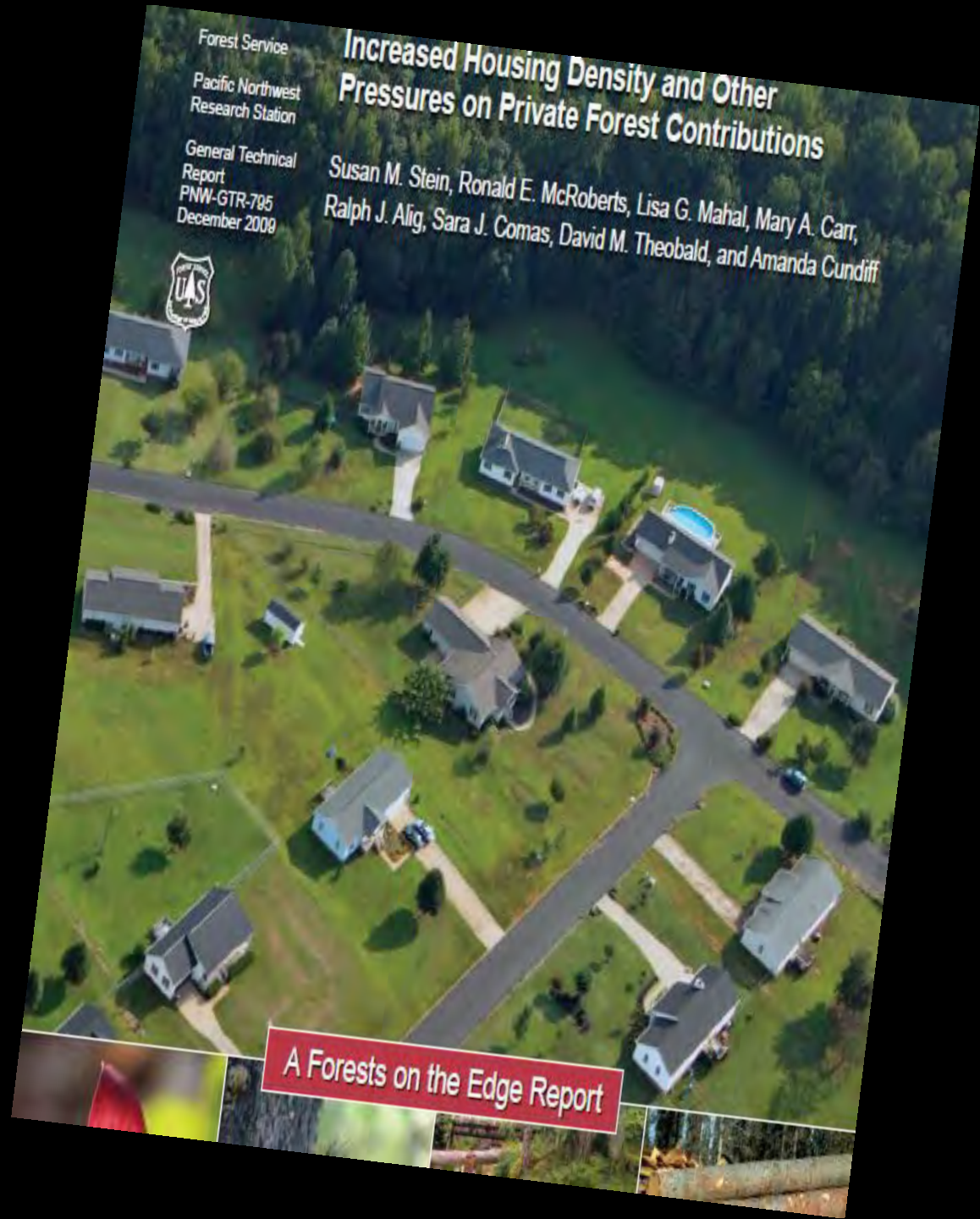


**U.S. Forest Service Report,
Private Forests, Public Benefit,
published in 2009**

Salmon Falls watershed
is identified as

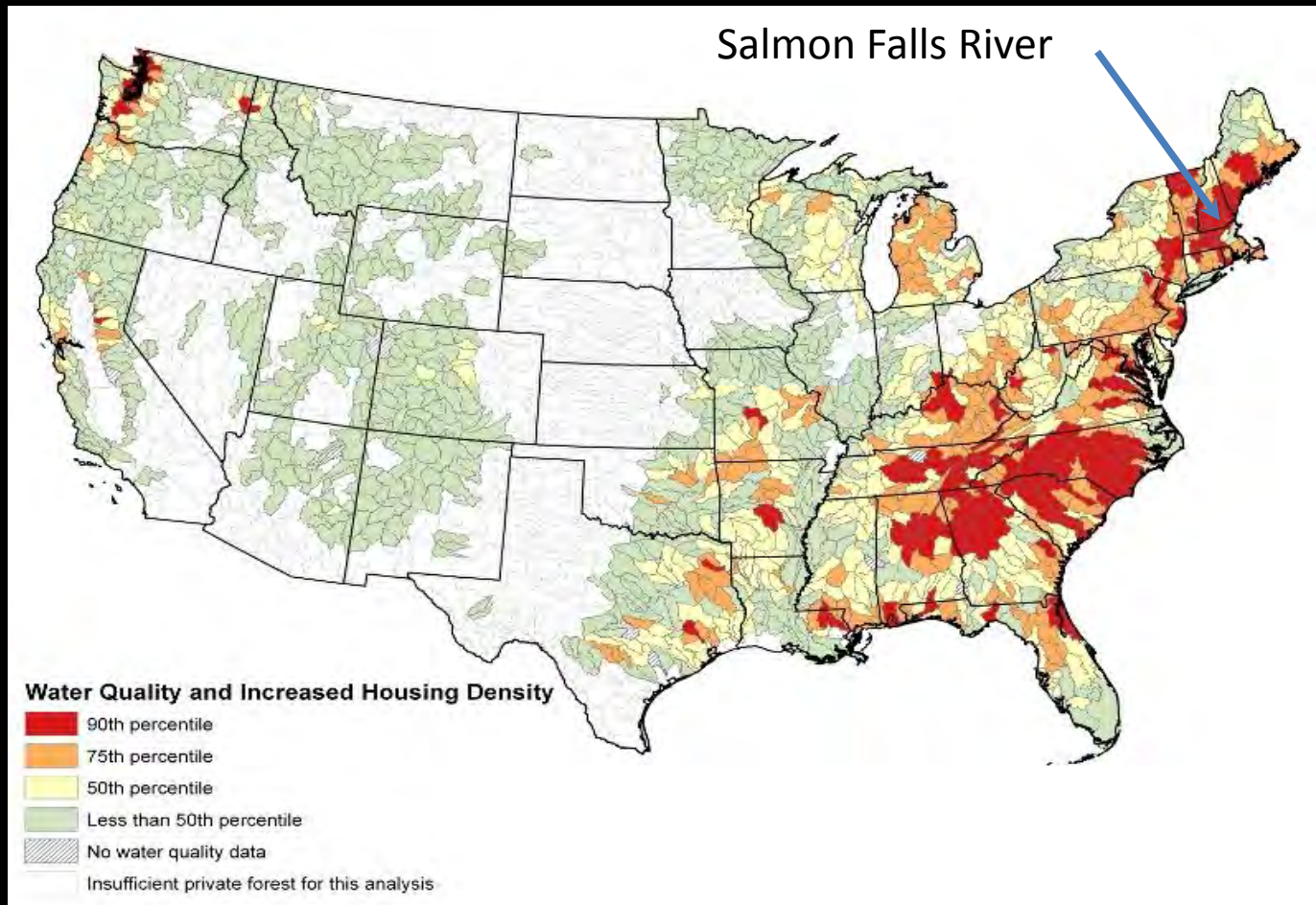
**the most threatened
in the nation**

with regard to a potential
decline in water quality
due to conversion of
private forested lands to
housing



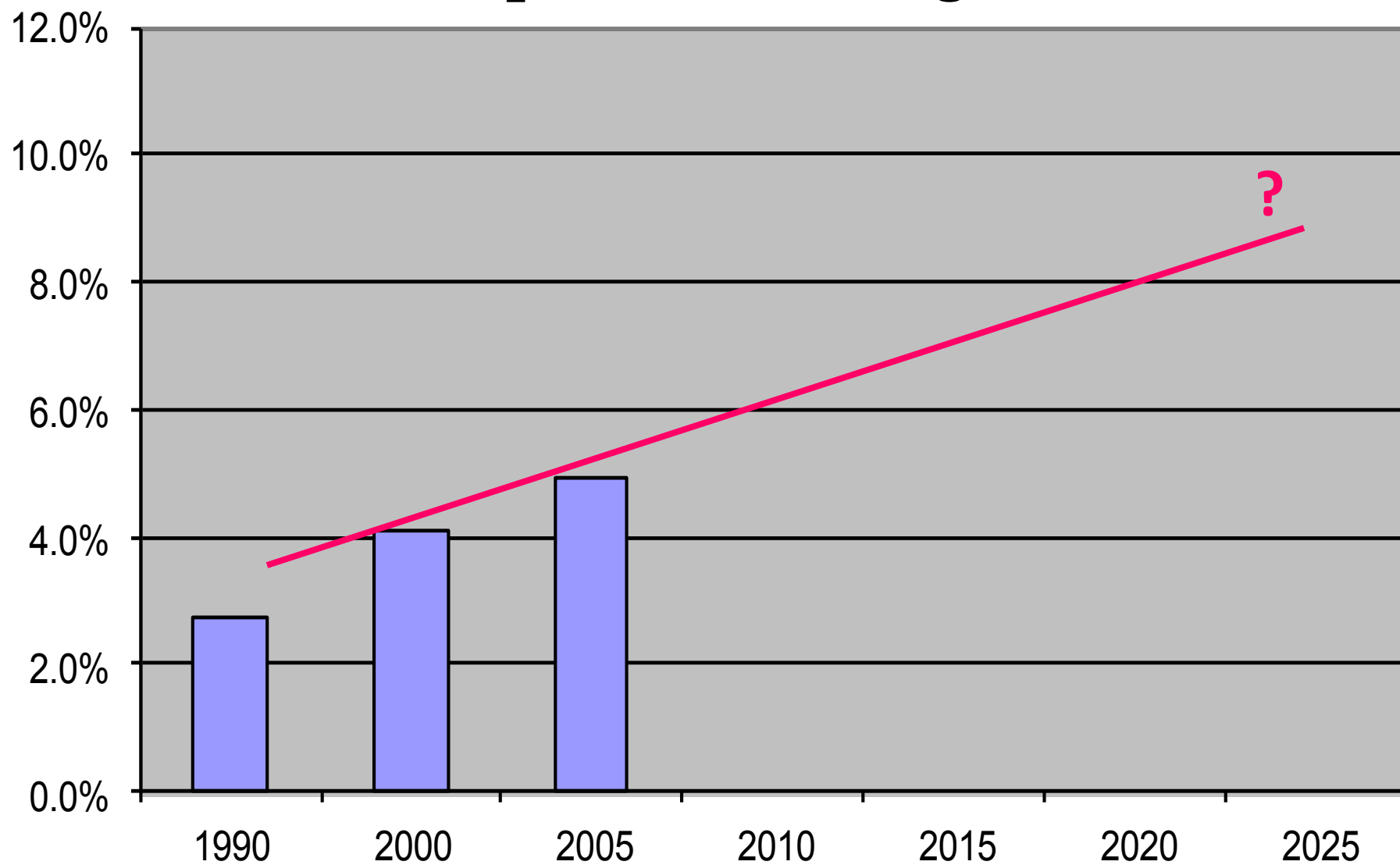
What is the greatest challenge?

Watersheds projected to experience the most change in water quality as a result of increases in housing density on private forested lands:



Source: 2009 U.S. Forest Service Report, “*Private Forests, Public Benefit*”

Salmon Falls Watershed Impervious Coverage



Kickoff Workshop Provided an Opportunity to Engage Local Partners in Project



Working Beyond Borders to Protect Drinking Water in the Salmon Falls Watershed

WORKSHOP ON OCTOBER 27, 2010 SPRING HILL LODGE, SOUTH BERWICK, MAINE

GO TO WWW.PREP.UNH.EDU/SFDW.HTML TO REGISTER, SEE AGENDA AND FIND DIRECTIONS

FIVE GOALS OF THE SALMON FALLS ACTION PLAN:

- 1) Conserve priority land
- 2) Help communities
- 3) Protect aquifers and waterways
- 4) Identify and clean up sources of contamination
- 5) Engage governments, citizens, & organizations



*Photo courtesy of Moose Mountains
Regional Greenways*

SALMON FALLS WATERSHED COLLABORATIVE

Clean, safe & sustainable water for
current & future generations

WHO WE ARE



- Water Systems
- Government (Federal, state, municipal)
- Land Trusts
- Watershed & Community Groups
- The Public

WE USE COLLABORATIVE LEARNING



VALUES WE PROTECT

- Drinking Water for 47,000 Citizens
- Boating & Swimming
- Fishing, Wildlife Watching & Hiking
- Healthy Human & Natural Communities
- Economic Benefits from Recreation & Tourist Industry

HOW WE WORK TOGETHER



THREATS WE FACE

- Water Pollution
- Land Clearing
- Land Conversion
- Loss of Wildlife



OUR ACTION PLAN

Developed to help us achieve clean water goals.



OUR ACCOMPLISHMENTS



US Water Prize Winner



Finding Pollution Sources



Land Conservation



Ordinances for Protection



Low Impact Development



Shoreland Surveys

OUR VISION

Clean, Safe & Sustainable Water for Current & Future Generations



USDA – EPA - State Agency “Summit” – January 2011



Engaging Landowners: NH NRCS and NH NACD Partner to Host First Landowner Outreach Event



U.S Water Prize Ceremony, April 2012, Washington, D.C.

Project Partners at Ceremony Included EPA, NRCS, States, and NGOs



What worked and why?



Our success depends on:

- ✓ Visionary Leadership
- ✓ Funding to implement the vision
- ✓ Committed partners willing to seek synergy
- ✓ A rigorous methodology for learning and engagement
- ✓ Partnership support and communication

Summary

- ✓ Get out and talk to people in the watershed
- ✓ Find common ground
- ✓ Cultivate relationships
- ✓ Leverage resources from partners (staff and funding)
- ✓ Have a plan (and have fun!)



Anna H. Boudreau, Truslow Resource Consulting LLC

454 Court St., # 304, Portsmouth, NH 03801, (603) 766-6670
aboudreau@truslowrc.com, Direct: (603) 557-7561

For more information about the Salmon Falls Watershed Collaborative: <http://prepestuaries.org/initiatives/salmon-falls-watershed-collaborative/>

