



Session 2B:
Partners in Water Quality:
How land trusts and water utilities are
conserving forests to provide clean drinking water.



A scenic view of a lake with several houses and trees in autumn foliage reflected in the water. The houses are white and grey, with some having porches. The trees are in various shades of red, orange, and yellow. The water is calm, reflecting the sky and the surrounding landscape.

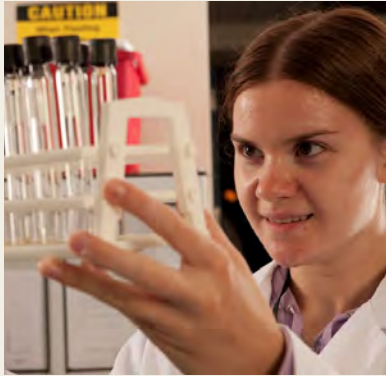
More Trees, Not More Treatment: Conserving Sebago Lake's Forests

**Paul Thomas Hunt
Portland Water District
Portland, Maine**

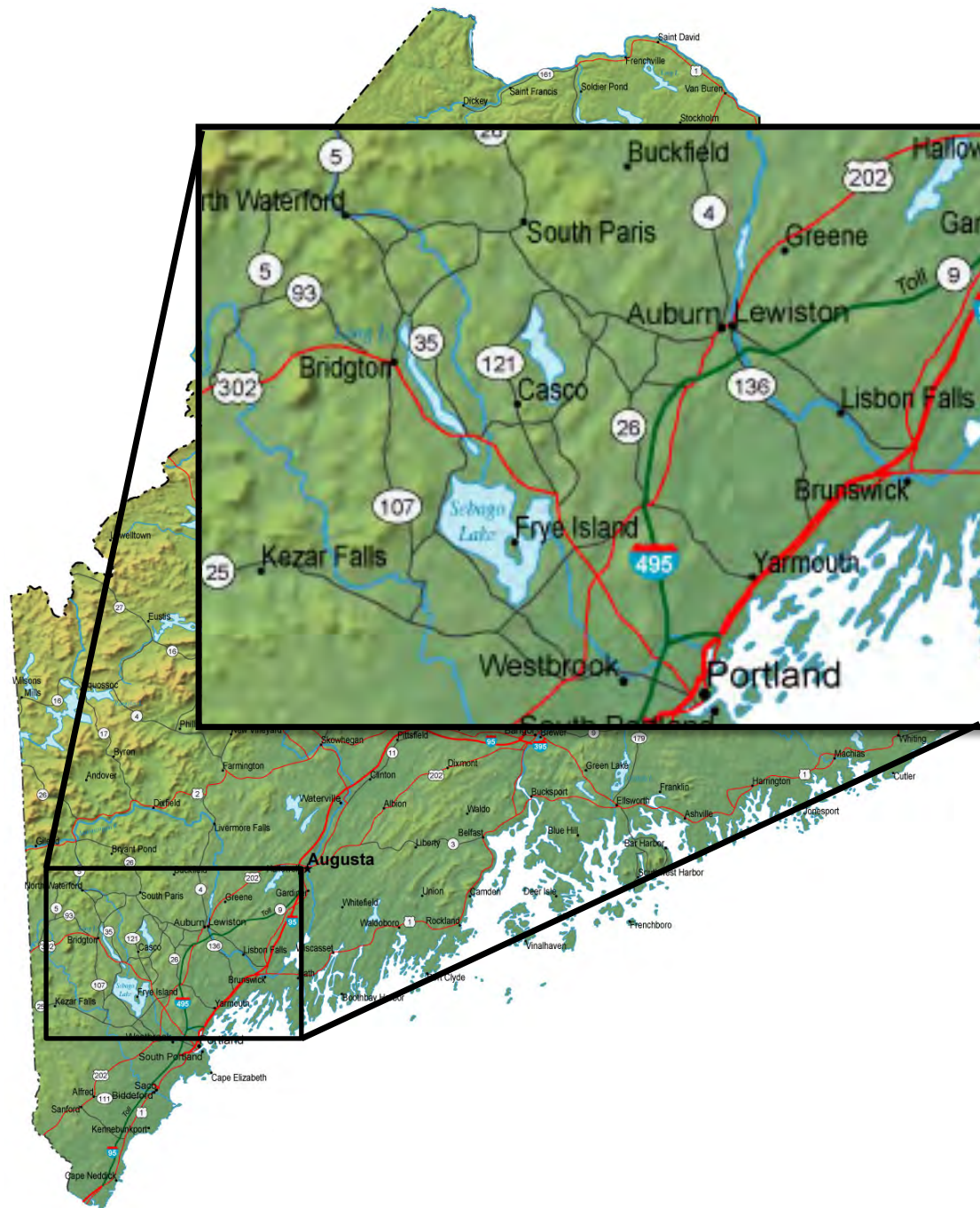
- **Our Challenge**
- **Our Land Conservation Program**
- **Our Goals and Progress To Date**
- **Questions**



Portland Water District

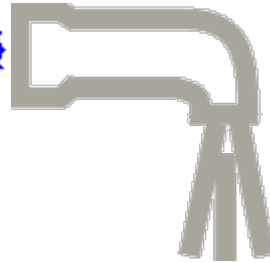


- Drinking Water since 1908
- 22 Million GPD
- 200,000 consumers in 11 communities
- Sebago Lake source



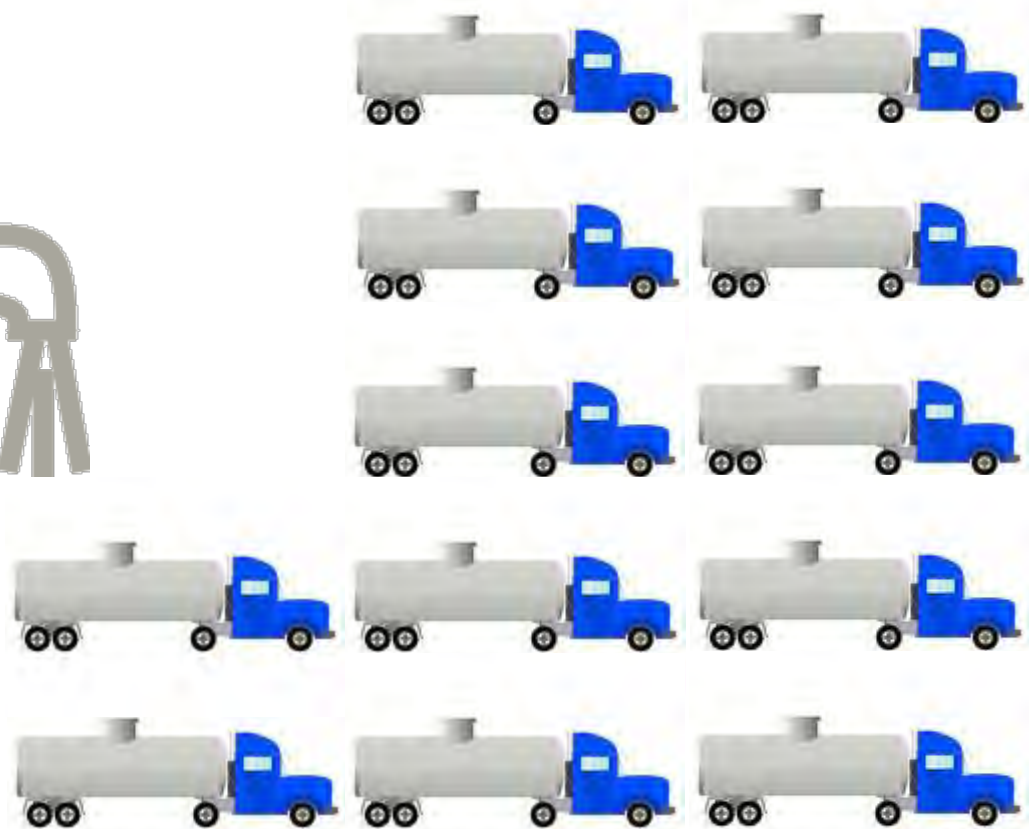
Sebago Lake





10,000 gallons

50 feet long



How much water is in Sebago Lake?



You could fill 100 million trucks!

**Water trucks filled with Sebago Lake water
would stretch from the earth
to the moon and back.**

TWICE!

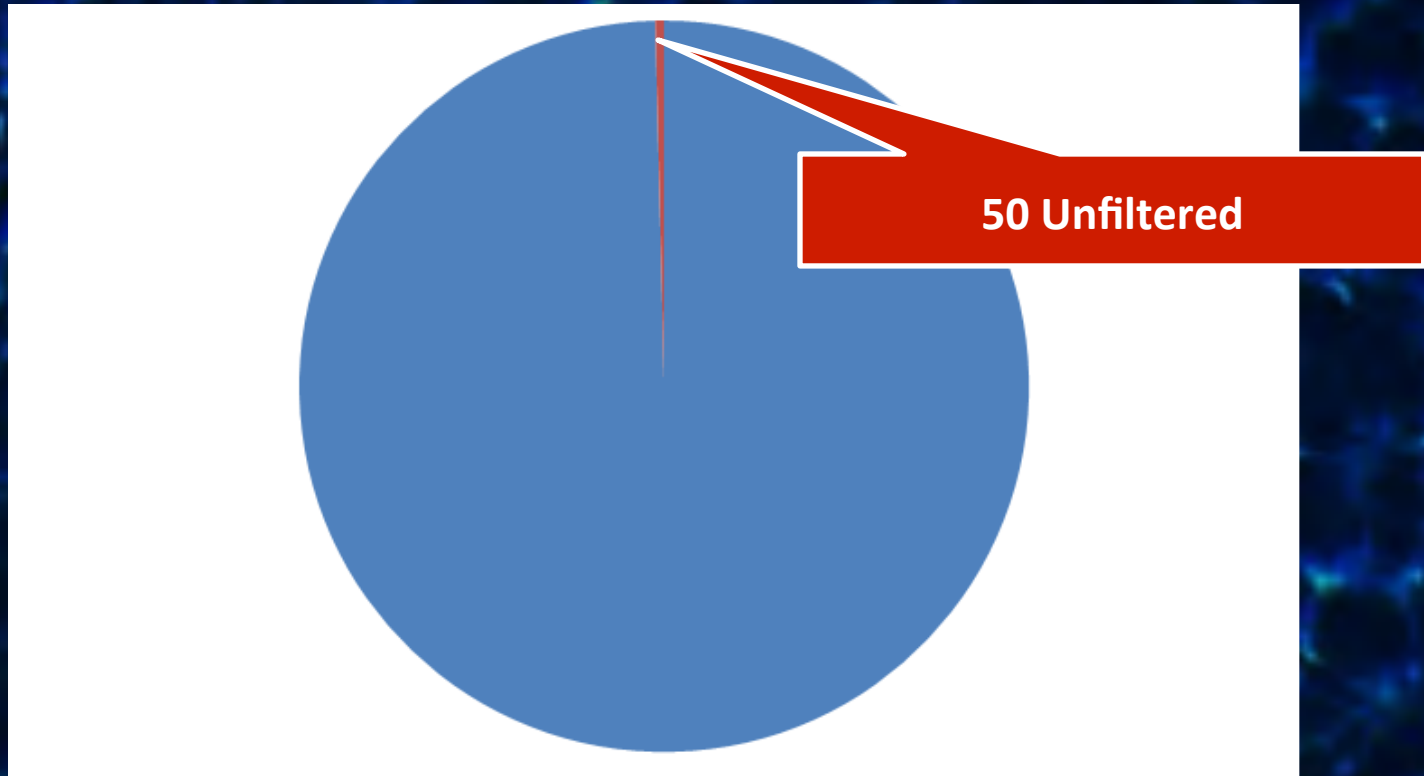




100 years in

storage

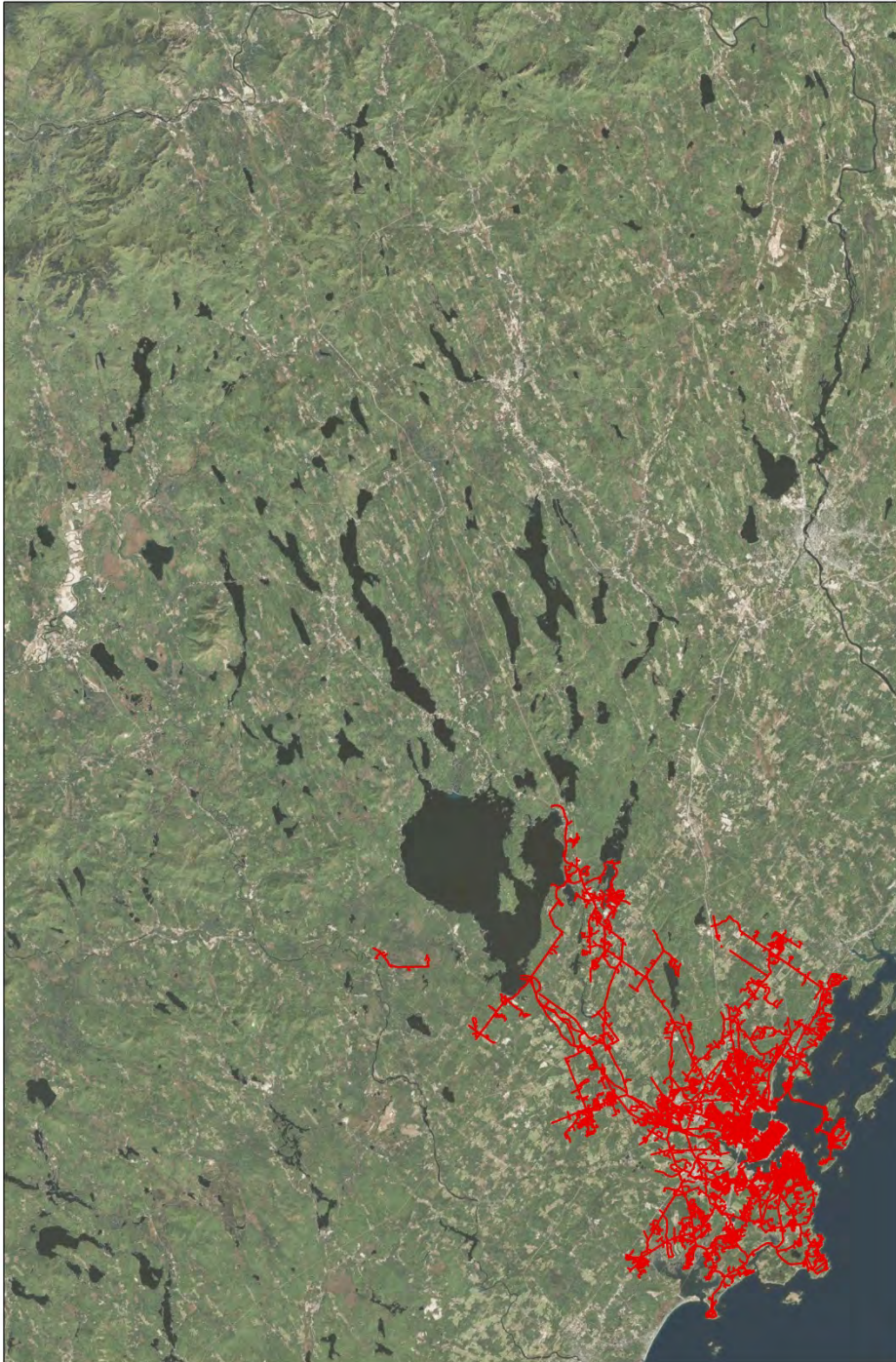
How Clean is Sebago Lake?

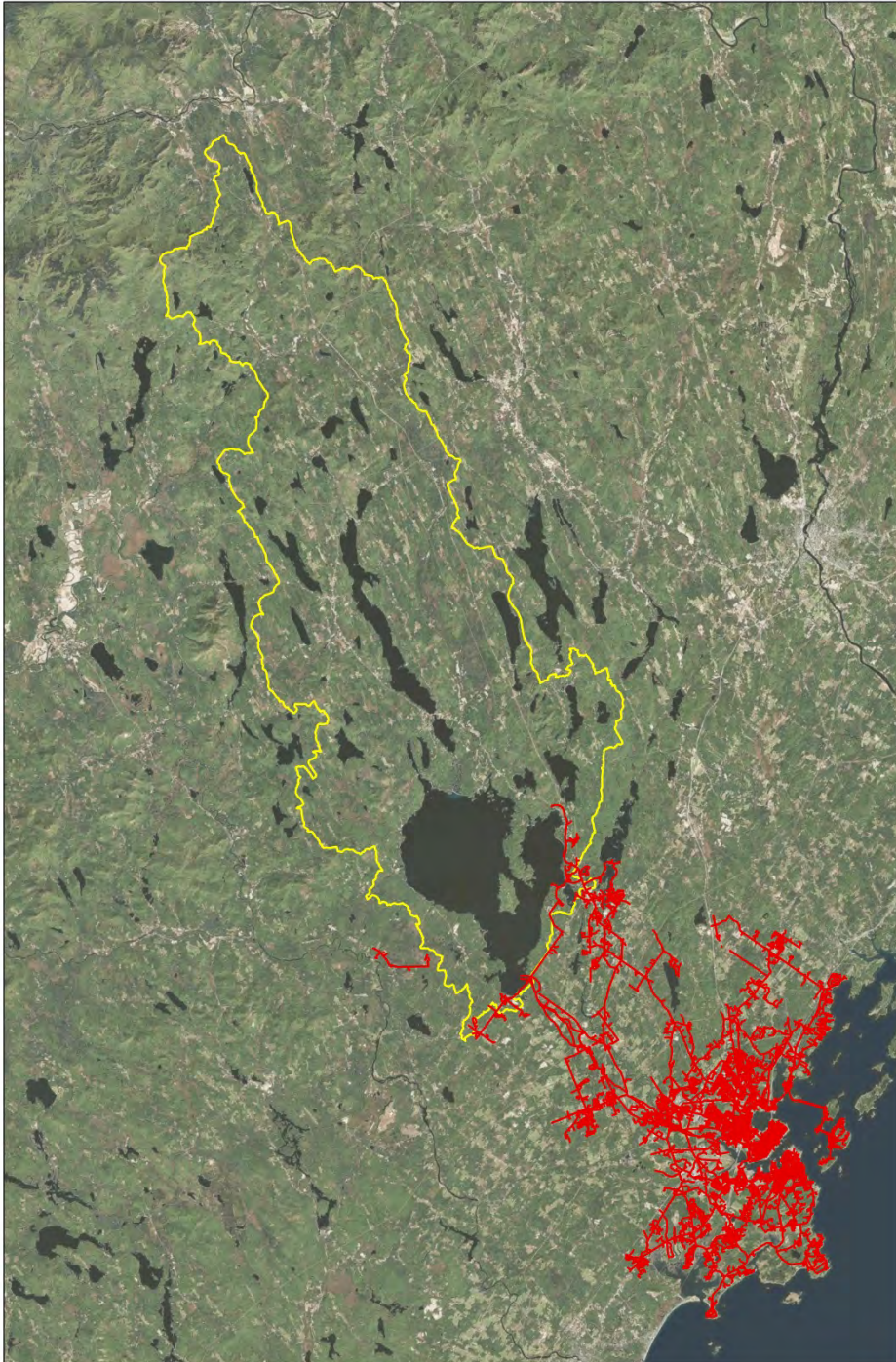


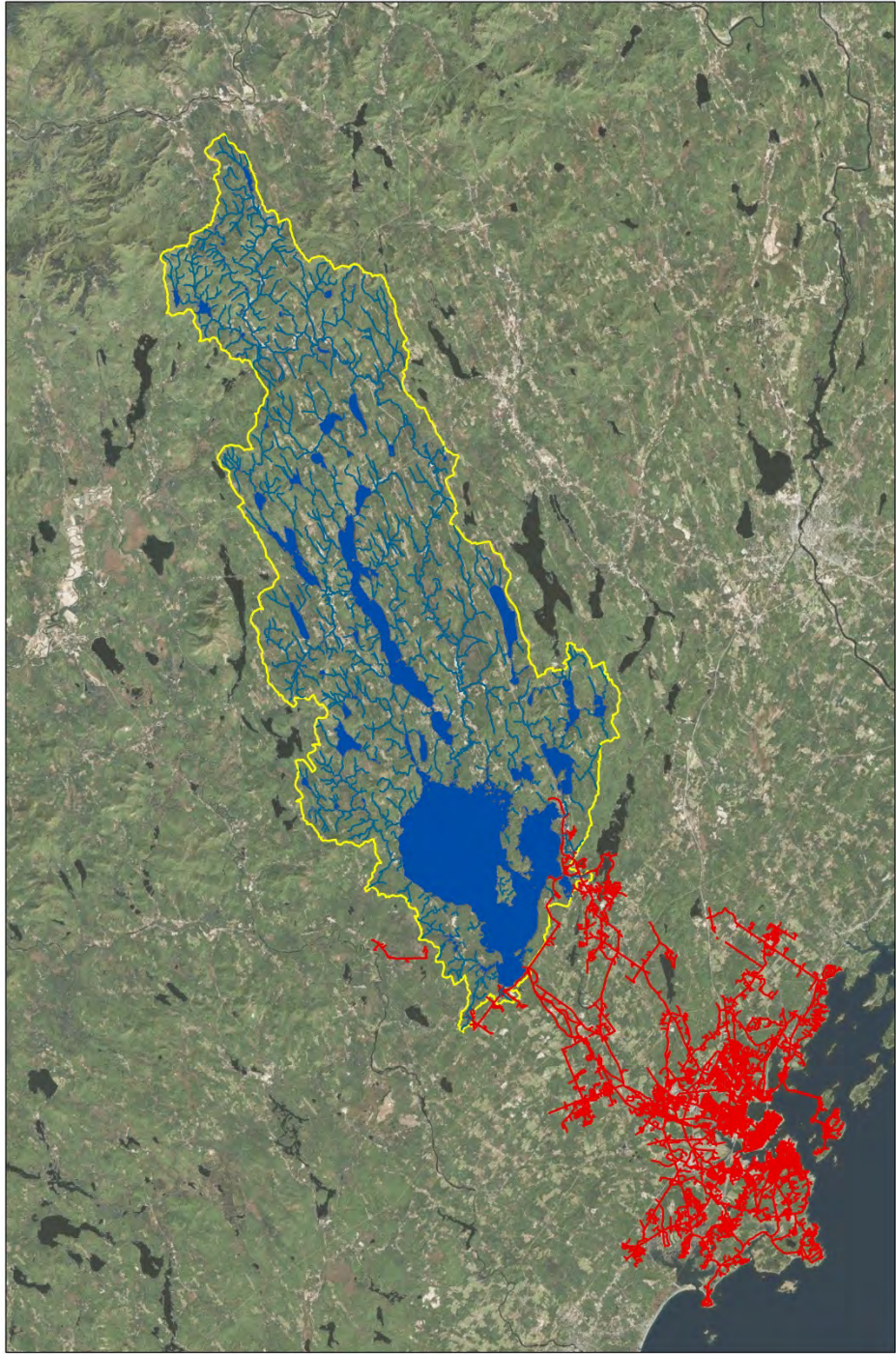
13,000 Public Water Systems

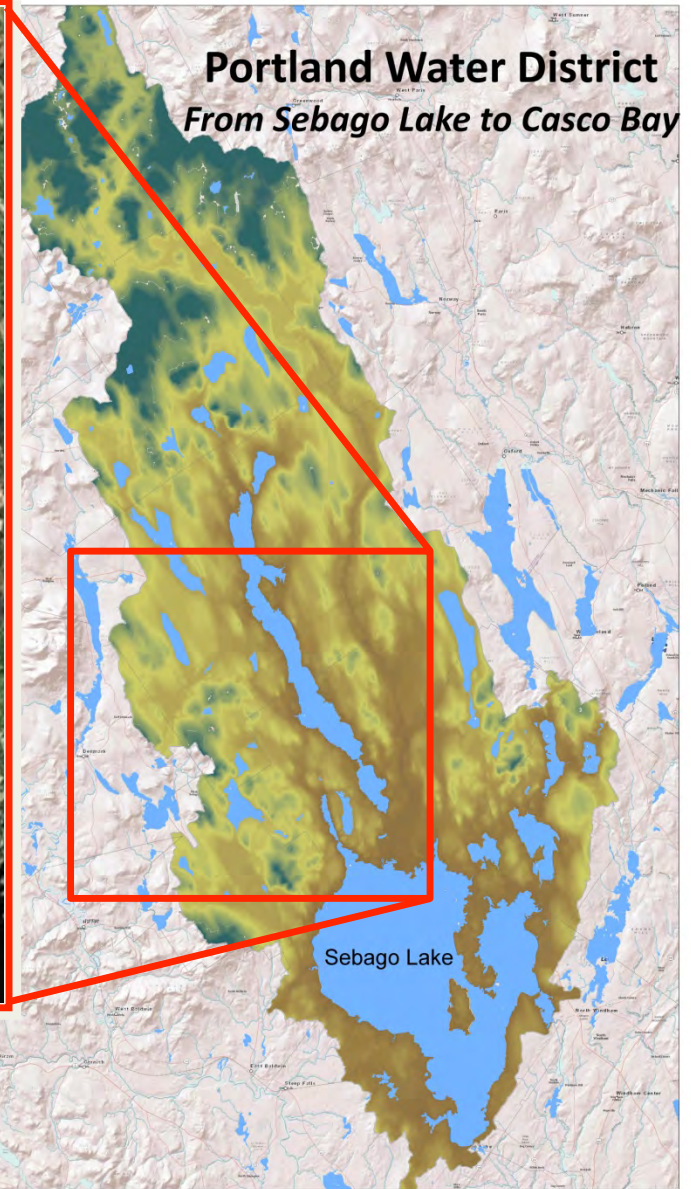
The Challenge?









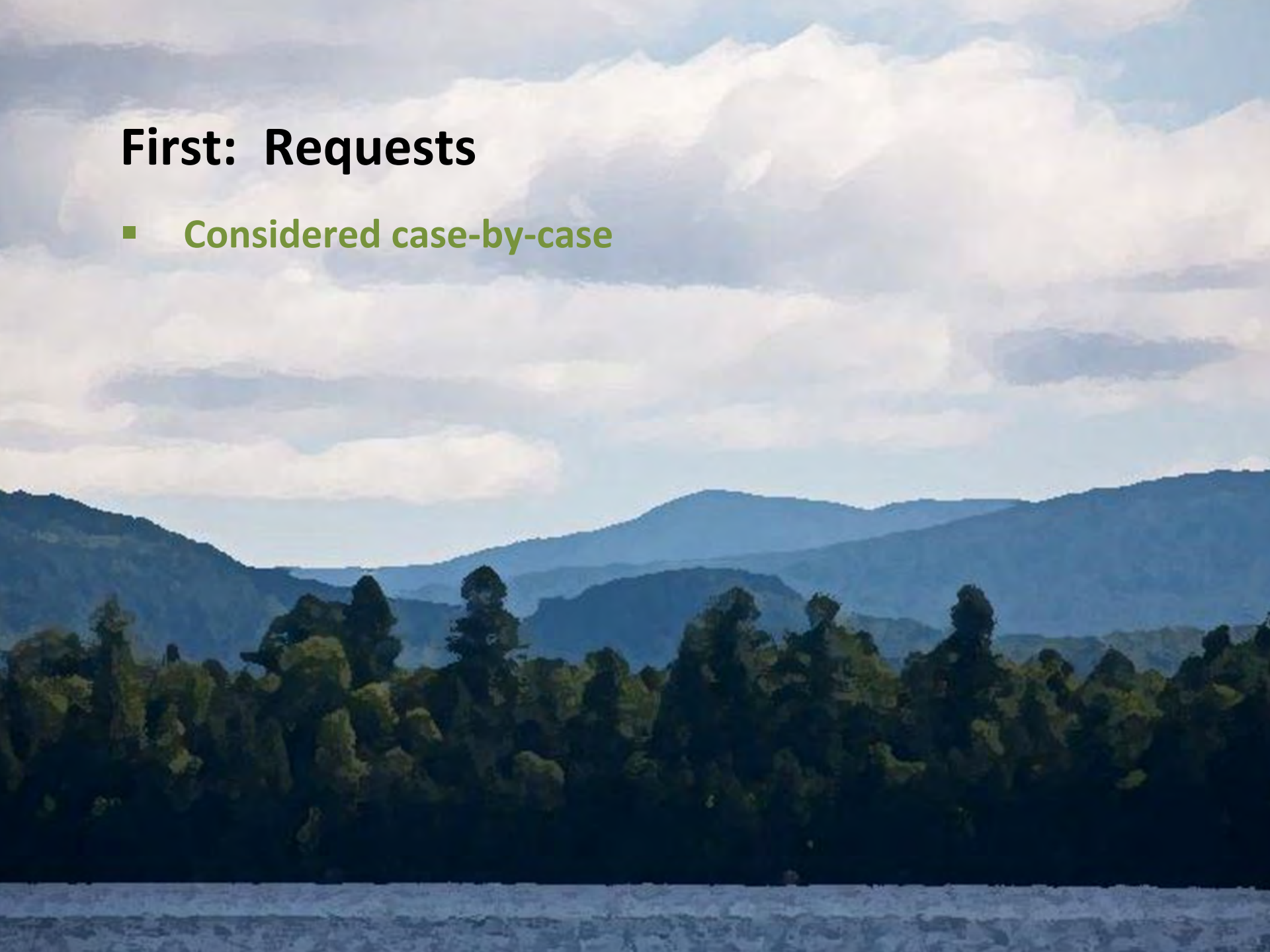


A photograph of a dense forest with tall, thin trees and a path leading into the distance. The trees are mostly deciduous with green foliage. The path is a dirt road that curves slightly to the right in the distance. The lighting is soft, suggesting a filtered sun. The overall color palette is dominated by various shades of green and brown.

The Challenge?
91.5% Privately-owned

First: Requests

- Considered case-by-case



Second: Policy

- Support efforts to conserve land in perpetuity



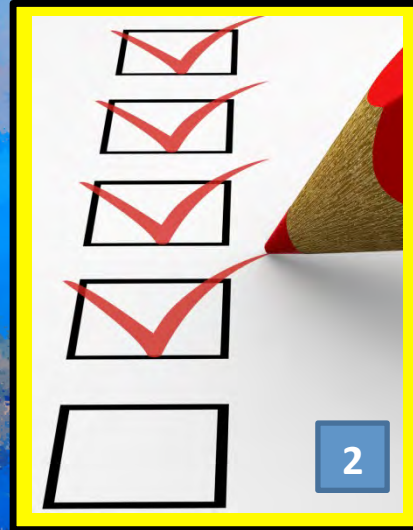
Third: Program

- Assist willing landowners who want to conserve forest

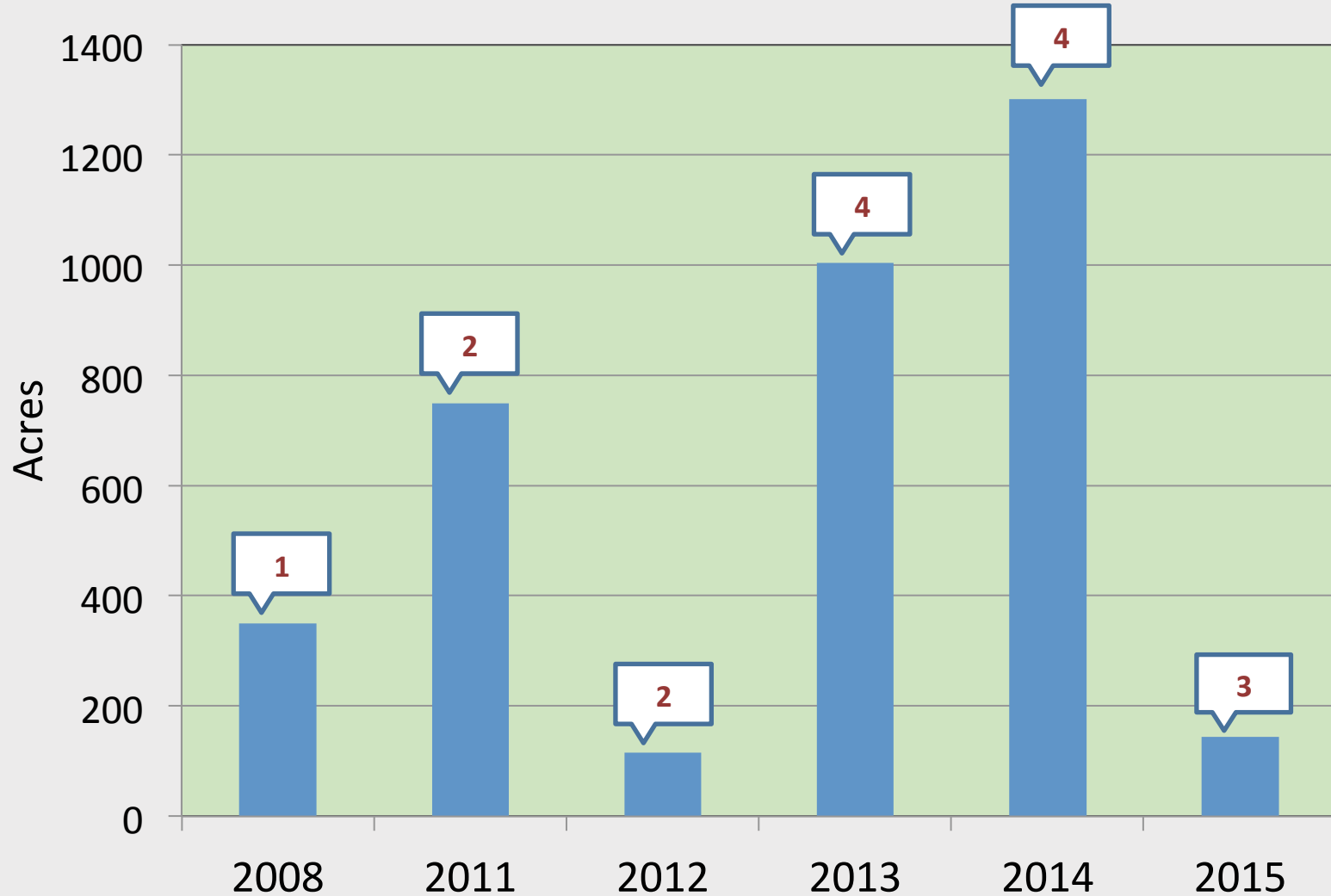
A photograph of a dense forest with misty, rolling hills in the background. The trees are dark green and dense. In the lower right corner, there is a yellow rectangular box with a black border containing the text '25%'.


25%

How our program works



Acres Conserved with PWD Support





Conservation Goal (Acres)	
Watershed Area	282,000
Acres Conserved as of 2012	28,000
25-year Goal	56,000

PWD Conservation History, 2000-Present				
		Projects	Acres	PWD contribution
Pre 2007	Requests	2	366	\$16,000
2008-2012	Policy	5	1216	\$28,650
2013-present	Program	11	2451	\$462,868
TOTALS		18	4033	\$507,518

