



Panelists:

Lisa Hayden

Ed Hood

Colin Novick

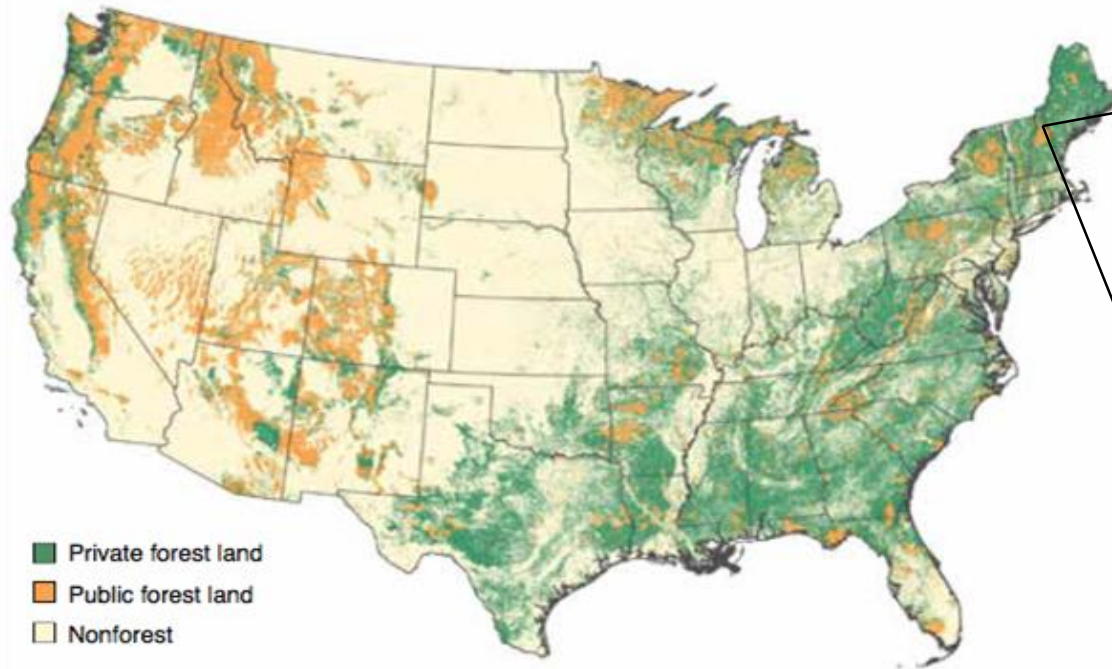
Kara Hartigan Whelan

Moderator:

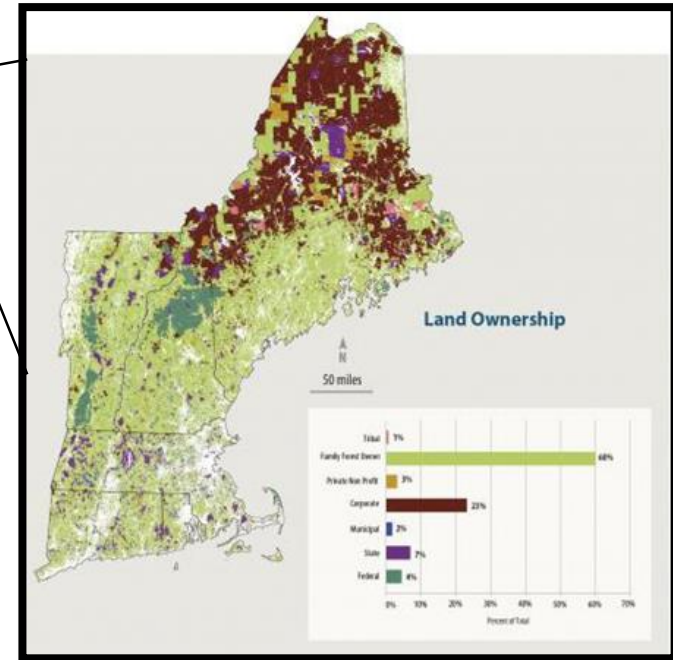
Hallie Schwab

Landowner Engagement Across Connected Urban, Suburban, and Rural Landscapes

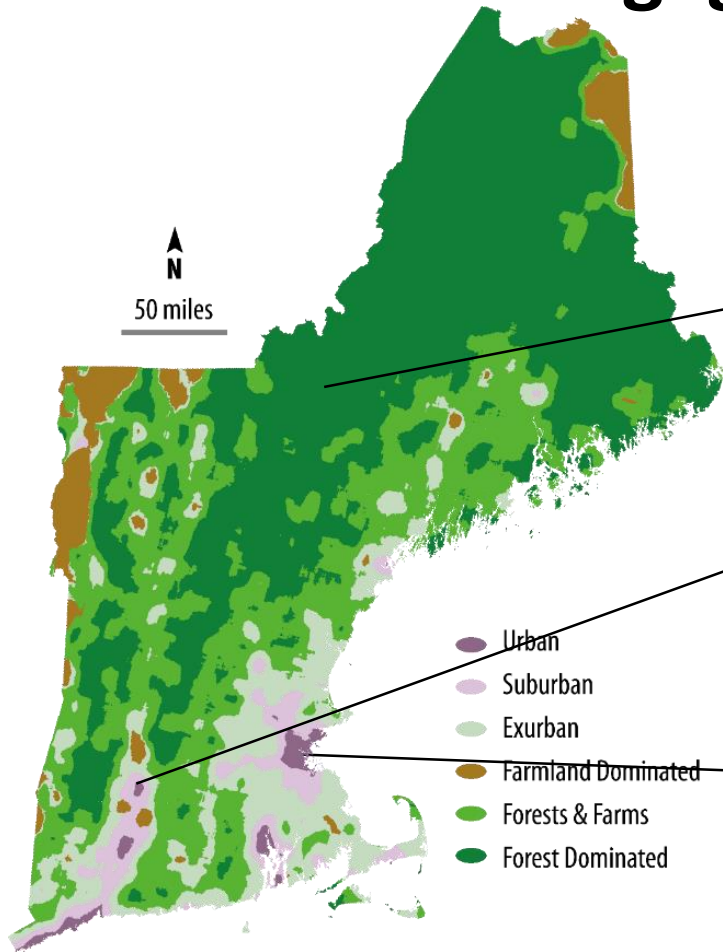
Land Ownership Trends



Ownership of woods and forest in the conterminous United States, 2013.



Landowner Engagement in Every Landscape

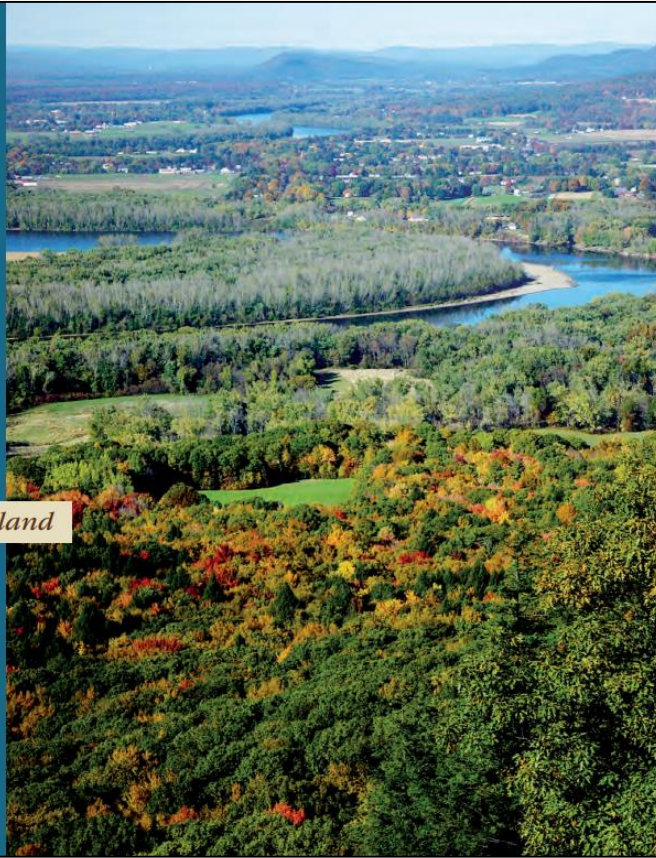


Wildlands and Woodlands



Farmlands and Communities

Broadening the Vision for New England

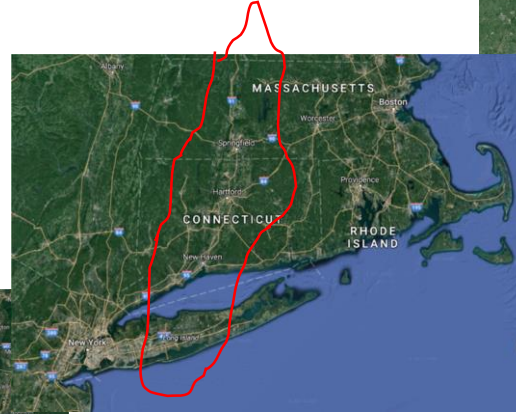


“a diverse landscape with well-managed forests and farmlands, intact wildlands, and thriving communities, with rural villages linked to suburban and urban centers through conserved lands”

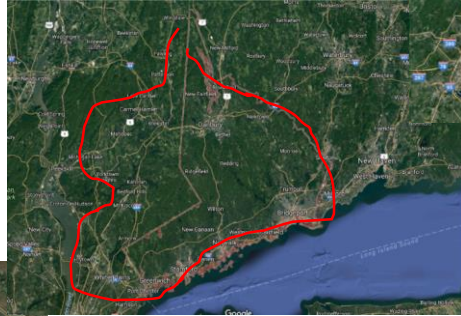
Scaling Up Through Partnerships



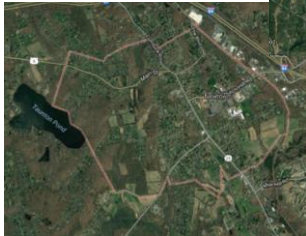
Region



Watershed



RCP



Municipality

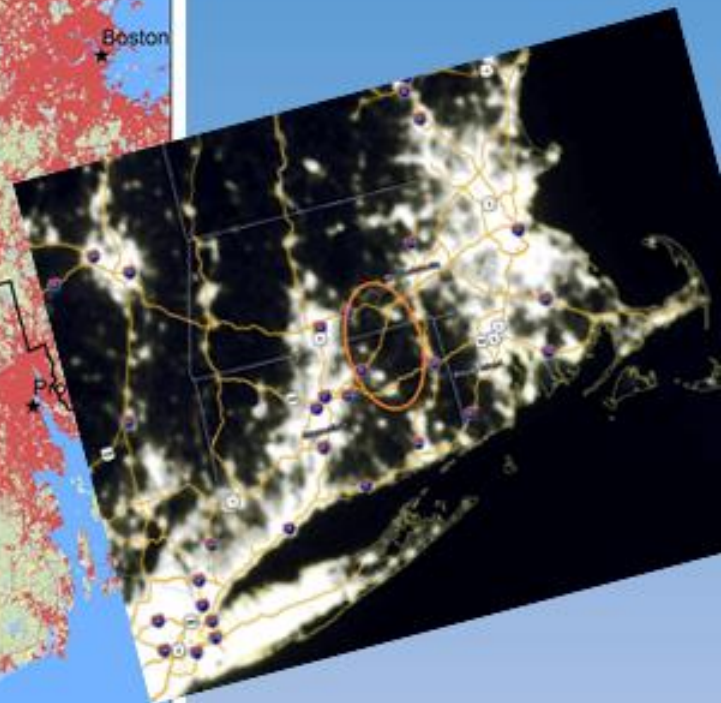
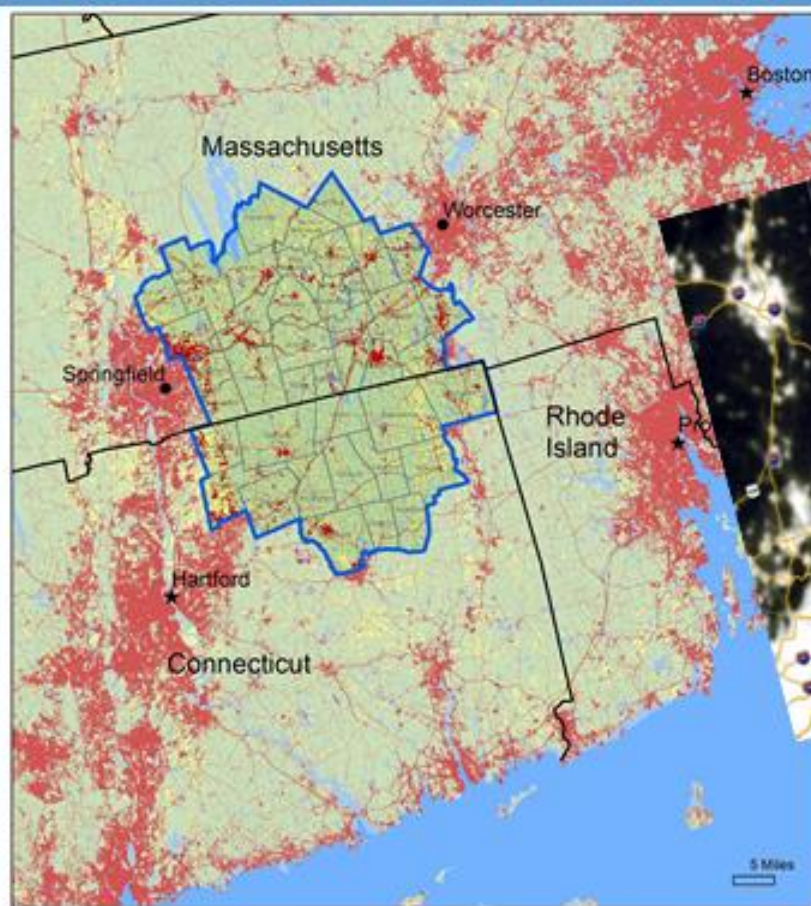


MassConn Sustainable Forest Partnership

- 38 Towns in Ct. and Ma.
- 760,000 acres
- 76% of the region, 581,000 acres, is forested
- 23% is currently protected (177,000 acres)

Long-term Conservation Goals:

- 80,000 acres of new conservation land – which with current conservation land, would be 256,000 acres, or 33% of the region.

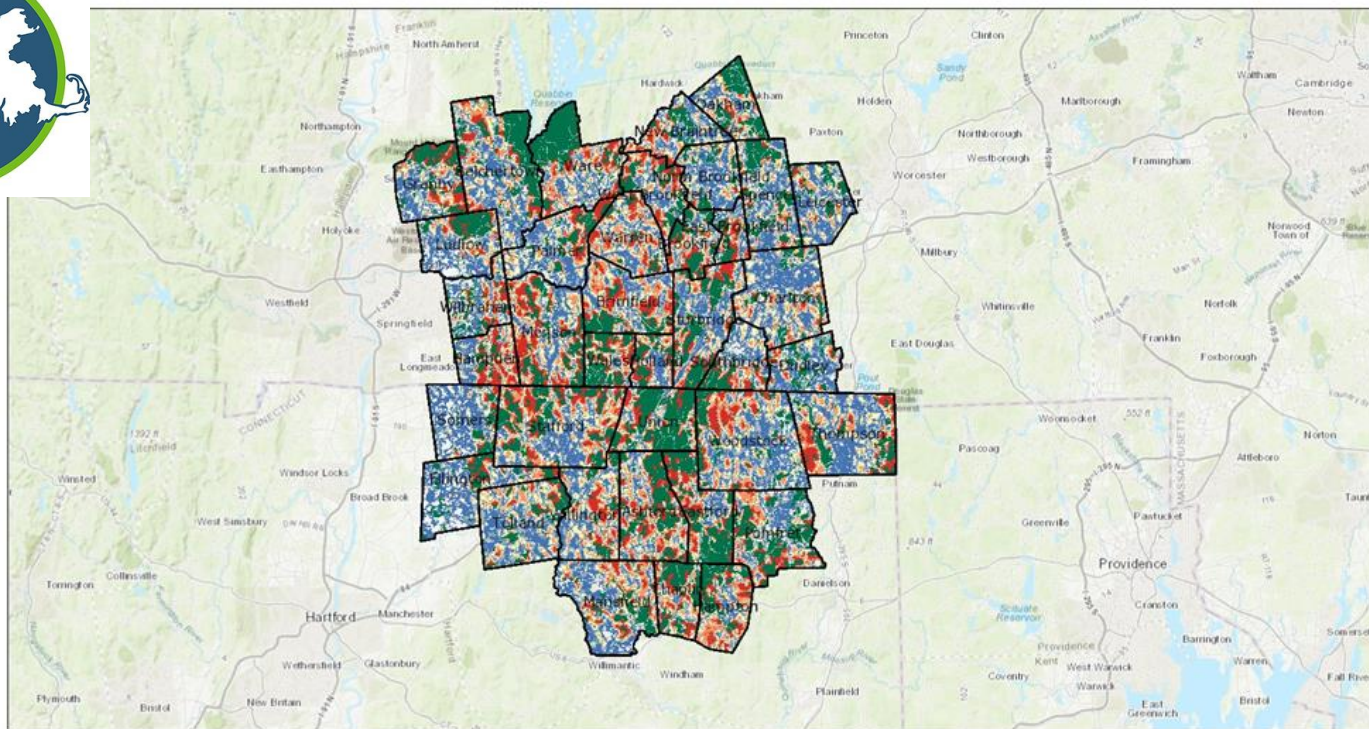


MassConn Sustainable Forest Partnership





MassConn Sustainable Forest Partnership Conservation Priority Map



November 14, 2017

□ MassConnSustainableForestPartnership_Towns

■ POS_Final_Undeveloped_Only_20160423

FINAL_MassConn_Scores_20160501 (only undeveloped, nonagricultural, unprotected only)

■ 80.00000001 - 100

■ 60.00000001 - 80

■ 40.00000001 - 60

■ 20.00000001 - 40

■ 0 - 20

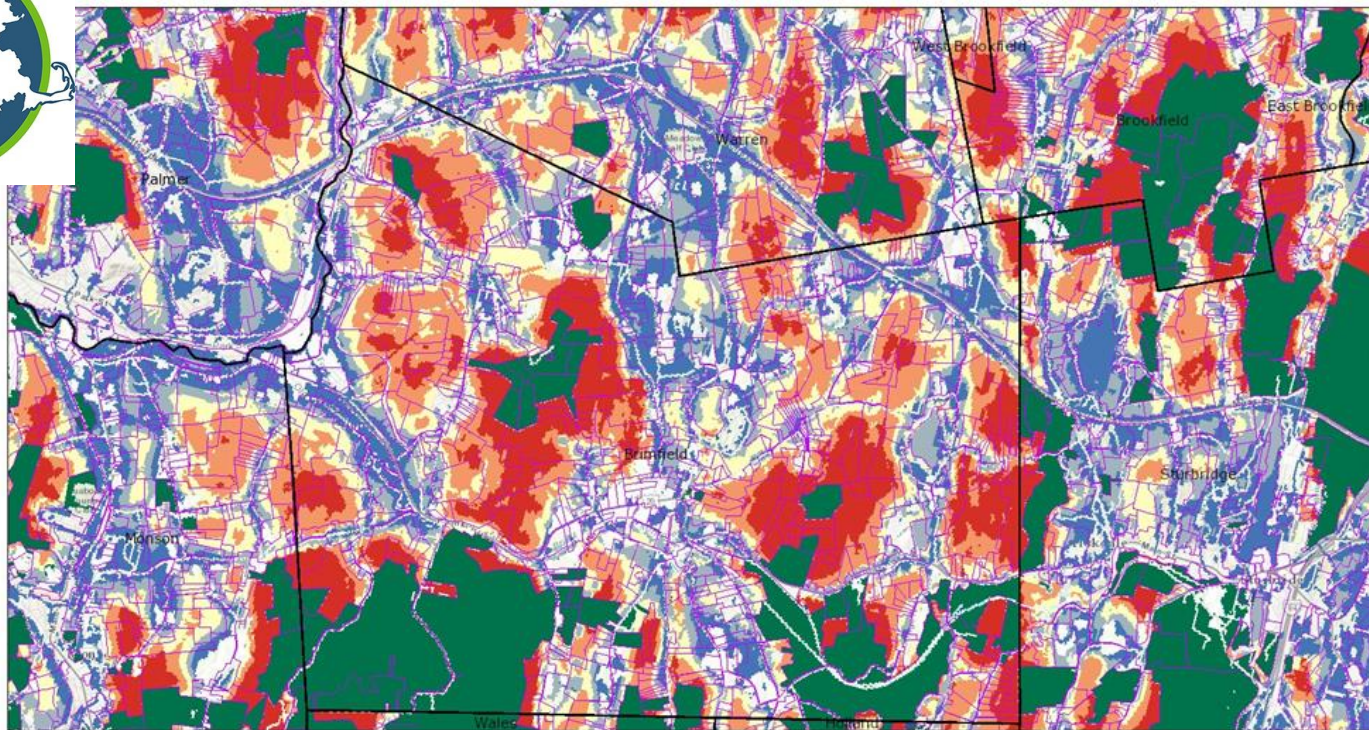
1:577,791



Sources: Esri, HERE, DeLorme, Intermap, increment P Corp., GEBCO, USGS, FAO, NPS, NRCAN, GeoBase, IGN, Kadaster NL, Ordnance Survey, Esri Japan, METI, Esri China (Hong Kong), Swisstopo, Mapbox, OpenStreetMap contributors, and the GIS



MassConn Sustainable Forest Partnership Conservation Priority Map - Brimfield, MA



November 14, 2017

- MassConnSustainableForestPartnership_Towns
- PARCELS - FinalMassConnParcelsLargerThan_5_Acres_20160623
- POS_Final_Undeveloped_Only_20160423

FINAL_MassConn_Scores_20160501 (only undeveloped, nonagricultural, unprotected only)

- 80.00000001 - 100
- 60.00000001 - 80

- 40.00000001 - 60
- 20.00000001 - 40
- 0 - 20

1:72,224



Sources: Esri, HERE, DeLorme, Intermap, increment P Corp., GEBCO, USGS, FAO, NPS, NRCAN, GeoBase, IGN, Kadaster NL, Ordnance Survey, Esri Japan, METI, Esri China (Hong Kong), Swisstopo, MapmyIndia, © OpenStreetMap contributors, and the GIS

My Massconn Woods:

**Engaging owners in decisions
about their land**



Four campaigns - 2014-2015

Easements & management

- “Touched” all 2,500 landowners owning 10+ acres in 10-town pilot region at least once
- >220 landowners representing nearly 10,000 acres responded to 1 or more offers



Wildlife Conservation Society grant 2016-17

How do we
incorporate
climate change
into stewardship?

*...Help foresters talk
with landowners...*



Equipping foresters for the conversation...

Considerations for Your Woodlot

The following are general recommendations to keep your woods healthy and able to adapt to changes into the future. While all of these actions are important, the checked recommendations are most applicable to your woods and your situation. To learn more, consult our fact sheet, consider working with a professional to implement these practices on the ground or visit our website at <http://my.massconnwoods.org/>.

Top Forest Stressors to Keep an Eye On	Extreme Weather Vulnerabilities
<input type="checkbox"/> Protect water and soils on your land	
<input type="checkbox"/> Improve ability of your trees to resist bugs and disease	
<input type="checkbox"/> Prevent and control non-native plants and weeds that threaten native plants and animals	
<input type="checkbox"/> Manage damage to young trees from excessive deer browsing	
<input type="checkbox"/> Prepare for big weather events by promoting strong, healthy trees in your woodlot	
<input type="checkbox"/> Respond quickly after big disturbance events to help your woods bounce back	
<input type="checkbox"/> Promote a diversity of tree species	
<input type="checkbox"/> Promote a diversity of tree sizes	
<input type="checkbox"/> Protect rare or sensitive plant & animal communities	

Keeping Your Woods Healthy Through the Years Ahead

Whether you spend time outside in your woods, or just enjoy the beauty of your trees and wildlife from your window, you likely love your woods and want to keep them healthy.

Forests are always changing and adapting to new conditions. Season changes are as anticipated as the progression of green summer leaves to the bright red and gold of fall foliage, or annual return of brightly colored migratory songbirds. Other changes in our woodlands are only visible when comparing differences across many years or decades.

Our climate is changing in ways that foresters have never experienced before, resulting in rising temperatures and shifts in seasonal precipitation patterns. You may be noticing some of these changes in your woods – such as earlier dates for the first signs of spring leaf-out, unusual weather patterns, longer dry periods in summer, or even an increase in fast-growing, nonnative plants such as poison ivy.

In particular, temperature and precipitation patterns in the MassConn region of northeast Connecticut and south-central Massachusetts have changed over the course of our lifetime. For example, the heaviest rainfall events have increased 70% in the Northeast U.S. from 1950 to 2010 – more so than in any other part of the country! Additional changes are expected by the time our grandchildren are having grandchildren of their own.

- Annual precipitation has increased by 3-4 inches in the MassConn Woods area, and is projected to rise at least another inch over the next four years. At the same time, extreme or very heavy precipitation events are expected to occur more often, and warmer temperatures will result in more rain than snow! This means your stream crossings and culverts will need to accommodate dramatically increased flow at times.
- By the end of this century, average annual temperatures are projected to increase somewhere between 5 to 10 degrees Fahrenheit, increasing both the length of the growing season and the frequency and severity of extremely hot days!
- A longer growing season, warmer temperatures, and more variable moisture can be likely to increase summer moisture stress leading to potentially harmful droughts.
- As the climate conditions change, the MassConn area is expected to become less favorable to the traditional northern trees we are familiar with and more favorable to typically southern species that are now at the northern reaches of their range. The means that many common trees such as maple, birch, and hickory are likely to experience greater stress, and new species more typical of the oak-hickory forest may have new opportunities!






Harvest & Habitat Walks at Norcross Sanctuary

Folded Hills Forest
40-acre management site
August 2016

Whaleback Ridge Forest
20-acre harvest site
May 2016



Considerations for Your Woodlot

Forester Recommended:

Remove invasives, replace with natives (protect soil, H₂O)

Thin, release crop/mast trees (prepare for weather; promote strong trees)



Visit Follow-Up – Supporting Actions on the Land



- Forester completed 8-hour adaptation workbook
- Climate planning incorporated into management plan
- Applying to NRCS for invasives treatment, habitat practices

2016 – Free Forester Visit Offers



Wildlife

- Direct mail to 613 MA, 424 CT owners of 30+ acres across 38 towns
- Also offered "free" forester visits at MassConn events and Woodland Ambassador workshops



Extreme Weather



Healthy Woods

- 40 parcel visits conducted by 6 trained consulting foresters
- Engaging landowners owning ~3,000 acres

Goal: 500 acres under climate-informed management

So far: 1,228 acres

Tools are Available to RCPs

- Climate messaging for owners
- Parcel-level forest adaptation

<http://www.forestadaptation.org/massconn>

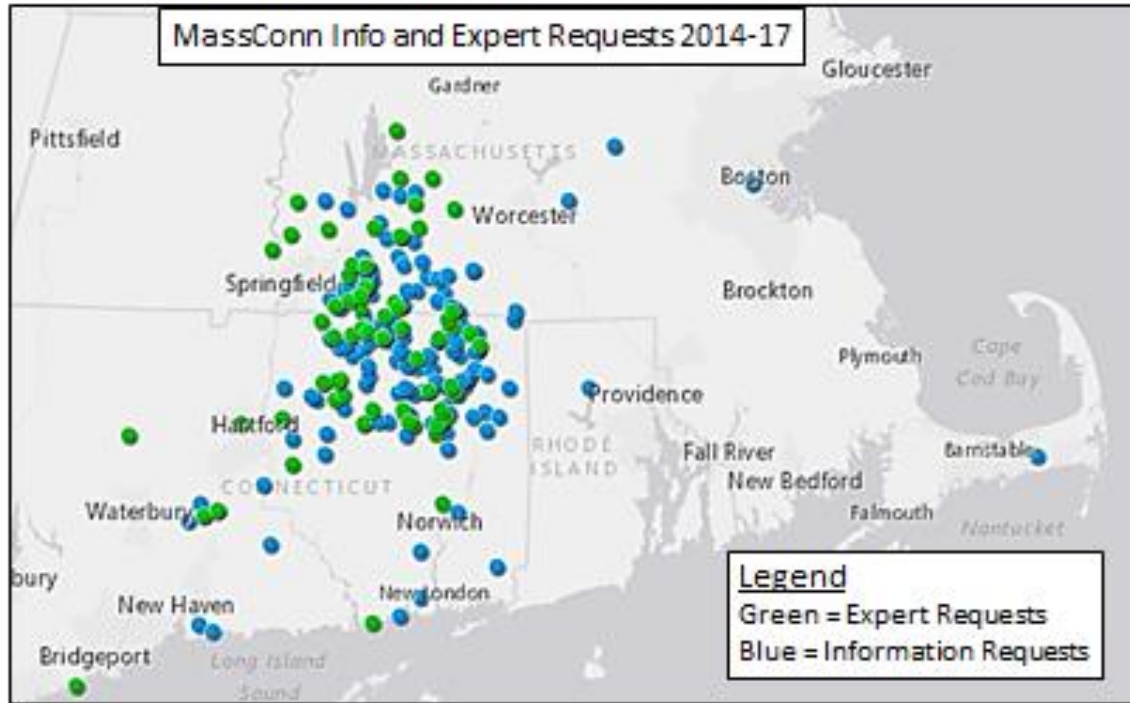
Online
Forester
Training
Scheduled



Forest Planning and Practices
for New England and New York

Weekly webinar sessions
January 15 - March 2, 2018
Adaptationworkbook.org

MassConn Hand-raisers (by mailing address)

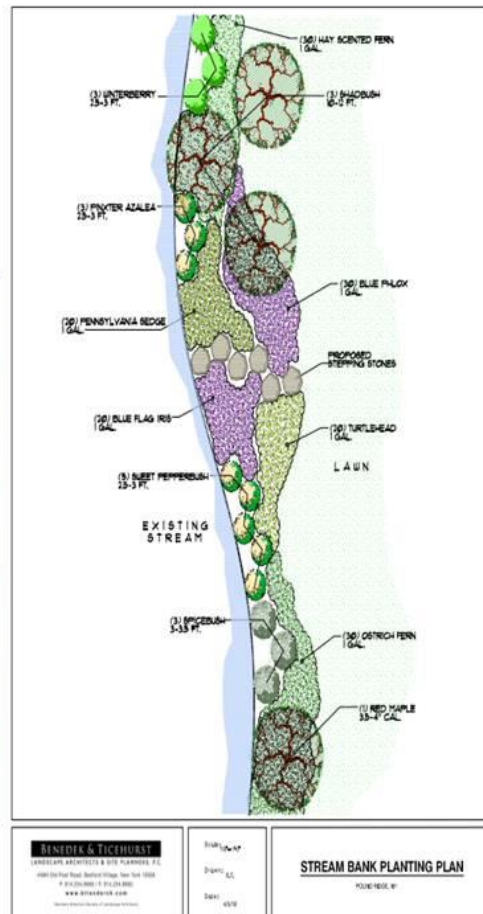


Reaching Out Proactively

- Define strategy/outcomes (Call to action)
- Get to know your audience (ask them)
- Maps & data (tailor your mailing list)
- Hone your message
- Tracking engagement/needs over time; following up
- Evaluate, refine



BUFFERS FOR BEAUTY
A GUIDE FOR PLANTING IN YOUR WETLAND BUFFER

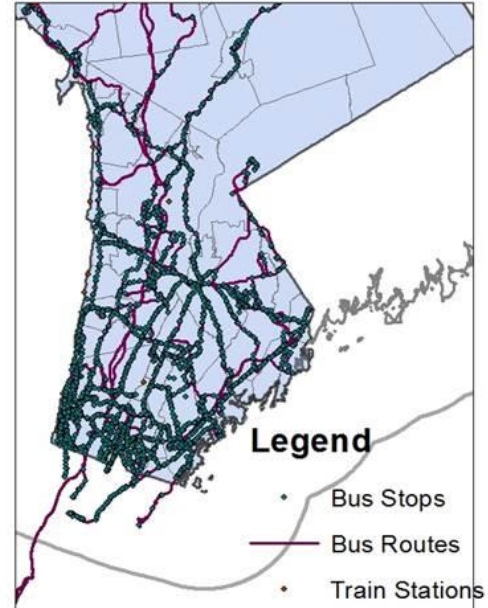
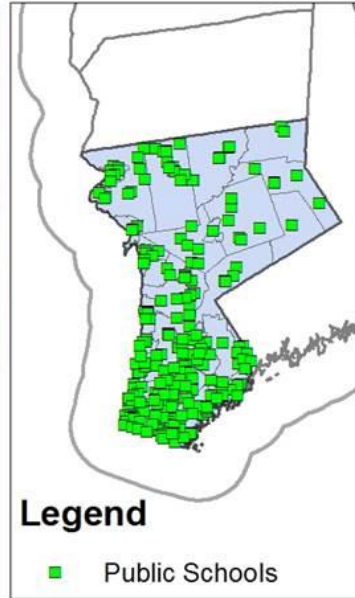
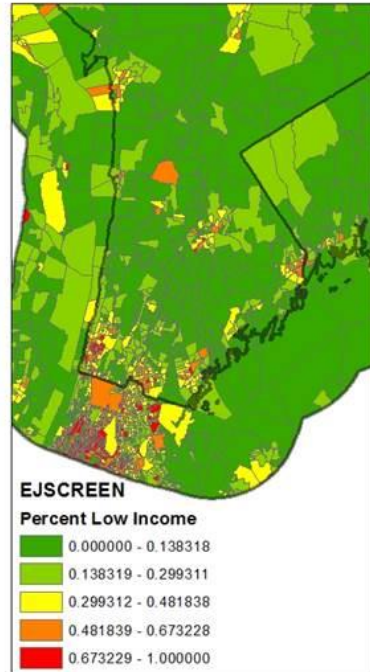




4 GOALS

1. Increase the pace of land protection so that XX% of our priority wildlife habitats, parks, trails, gardens, and farms are linked to others by 2060.
2. Make it easy for municipalities and community groups to conserve and steward land together.
3. Engage landowners to take stewardship and land protection actions.
4. Improve the knowledge and capacity of H2HRCP members so they can achieve their shared mission.

H2H CURRENT PROJECT: Urban Co-occurrence Modeling





Greater Worcester Land Trust



CONTEXT: Greater Worcester Land Trust

Founded:

1987

Staff:

1.5 FTE

Board:

11 (Twice Monthly)

Membership:

275

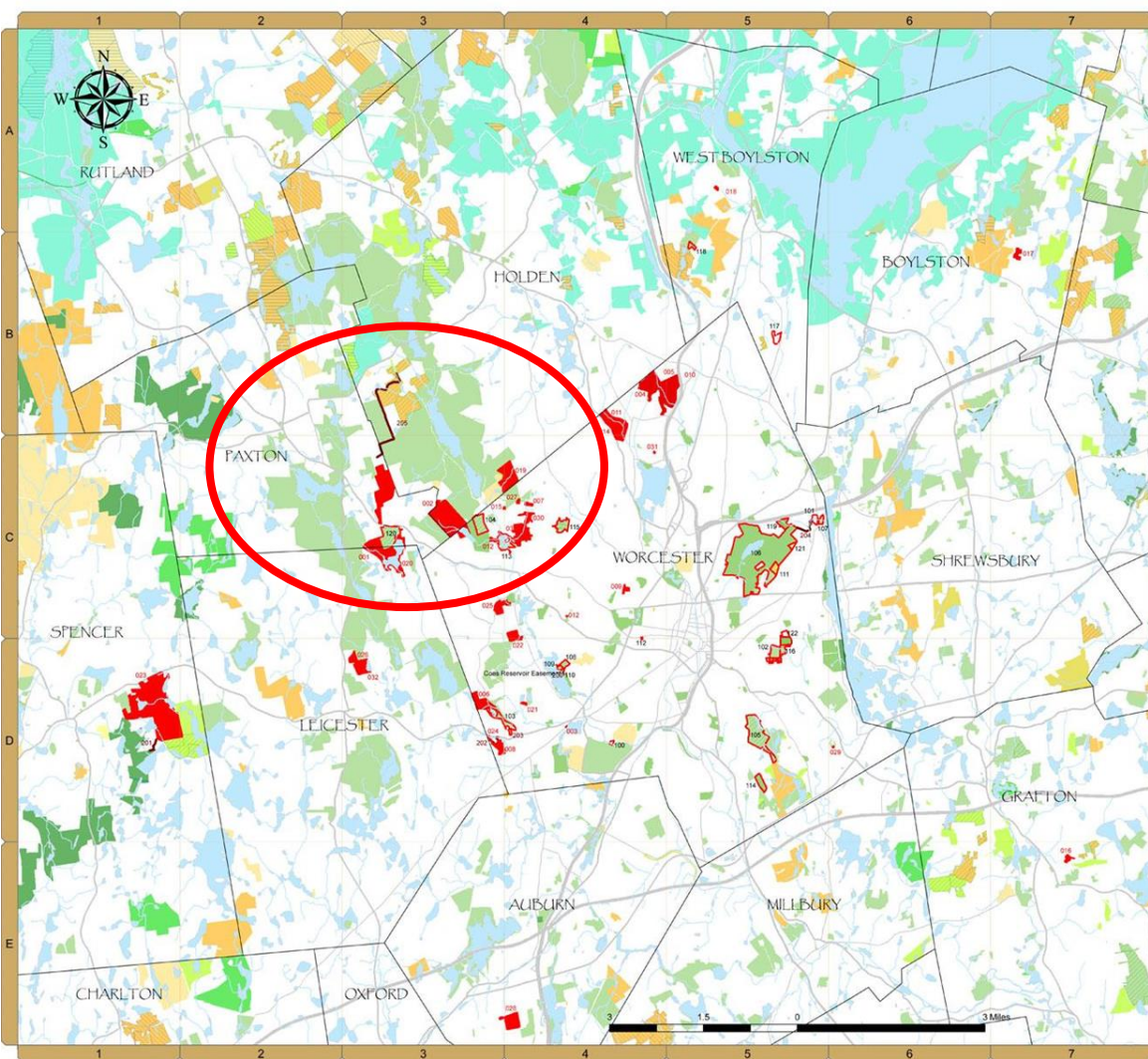
Annual Budget:

\$120,000

Towns:

9

Fee: 1125.5ac **CE:** 911.6ac **Easement:** 14.4ac **Pass Through:** 467ac



GWLT Property Holdings

Fee Owned

- 001 - (C3 - 1990) Southwick Pond [113.77 ac.]
- 002 - (C3 - 1991) Cascades West [22.59 ac.]
- 003 - (D4 - 1992) Curtis Pond [0.10 ac.]
- 004 - (B4 - 1995) Boverud/Battle [0.1785 ac.]
- 006 - (B4S - 1995) Lindborg Parcel [36.83 ac.]
- 007 - (D3 - 1996) Merse 26 [28.29 ac.]
- 007 - (C4 - 1997) Bringham Road [2.53 ac.]
- 008 - (D3 - 1998) Kettle Brook [14.36 ac.]
- 009 - (C4 - 1999) Prospect Hill [3.90 ac.]
- 010 - (B4S - 2004) Boverud Park [83.80 ac.]
- 011 - (B4C4 - 2009) Sargent's Brook [5.5 ac.]
- 012 - (C4 - 2004) South Flagg Preserve [0.16 ac.]
- 013 - (C3 - 2005) Cascading Waters [2.74 ac.]
- 014 - (B4 - 2005) Nick's Woods [59.76 ac.]
- 015 - (C3 - 2006) Tory Fort Lane [0.60 ac.]
- 016 - (B7 - 2007) Old North Street Orchard [4.27 ac.]
- 017 - (B7 - 2008) Elmer's Seat Pleasant Hill [7.25 ac.]
- 018 - (A5 - 2008) Pine Glen [1.06 ac.]
- 019 - (C3 - 2009) Kinney Woods [52.65 ac.]
- 020 - (C3 - 2010) Southwick Brook [4.61 ac.]
- 021 - (D4 - 2010) Sherrill Trail [1.21 ac.]
- 022 - (C4 - 2012) Tetassett Ridge [17.30 ac.]
- 023 - (D1 - 2012) Sibley Farm [325.0 ac.]
- 024 - (D3 - 2012) Kettle Brook Overlook [0.21 ac.]
- 025 - (C3 - 2013) Fowler Brook - South Fork [12.71 ac.]
- 026 - (D3 - 2013) Frank Cooke Forest [27.26 ac.]
- 027 - (C4 - 2013) Bringham Road (Lawn) [1.56 ac.]
- 028 - (E34 - 2013) Granger Woods [29.5 ac.]
- 029 - (D6 - 2014) Kenigke Pumpquaghts [0.29 ac.]
- 030 - (C4 - 2014) Cook's Brook [15.34 ac.]
- 031 - (C4 - 2014) Roosevelt Oak [0.27 ac.]
- 032 - (D3 - 2014) Ganley [10.0 ac.]
- 033 - (C4 - 2015) Donker Farm [23.82 ac.]

Easements

- 200 - (D4 - 2004) Coes Reservoir Easement [0.023 ac.]
- 201 - (D1 - 2006) Candlewood Millstate Easement [0.37 ac.]
- 202 - (D3 - 2008) Kettle Brook Easement I [0.02975 ac.]
- 203 - (D3 - 2008) Kettle Brook Easement II [0.607 ac.]
- 204 - (C5 - 2011) Sisters of ND East Side Easement [0.612 ac.]
- 205 - (B3C3 - 2012) Arenalum's Ridge Easement [1.91 ac.]

Conservation Restrictions

- 100 - (D4 - 1997) Ryan Ornamental [1.94 ac.]
- 101 - (C5 - 1998) Coal Mine Brook I [7.30 ac.]
- 102 - (D5 - 2000) Crow Hill [29.0 ac.]
- 103 - (D3D4 - 2000) Parsons's Cedar Mill [43.06 ac.]
- 104 - (C3 - 2001) Cascades East [30.86 ac.]
- 105 - (D5 - 2002) Broad Meadow Brook Savannah [80.0 ac.]
- 106 - (C5 - 2003) Green Hill Park [487.00 ac.]
- 107 - (C5 - 2003) Coal Mine Brook II [4.60 ac.]
- 108 - (D4 - 2004) Coes Reservoir Park [8.65 ac.]
- 109 - (D4 - 2004) Coes Reservoir Shoreline I [9.95 ac.]
- 110 - (D4 - 2004) Coes Reservoir Shoreline II [0.24 ac.]
- 111 - (C5 - 2007) Green Hill Park DMH [9.62 ac.]
- 112 - (C4 - 2007) Pleasant & Winslow [0.56 ac.]
- 113 - (C3C4 - 2007) Cook's Pond [33.00 ac.]
- 114 - (D5 - 2007) Bell Conservation Area [15.00 ac.]
- 115 - (C4 - 2009) Moreland Woods [21.00 ac.]
- 116 - (D5 - 2009) Crow Hill Savannah [8.4635 ac.]
- 117 - (B5 - 2009) Angell Brook [11.00 ac.]
- 118 - (B5 - 2011) Malden Brook [5.40 ac.]
- 119 - (D3 - 2011) Trinity Woods [12.85 ac.]
- 120 - (C3 - 2012) Muir Meadows [57.00 ac.]
- 121 - (C5 - 2013) Worcester Hospital Farm [4.635 ac.]
- 122 - (C5D5 - 2014) Crow Hill North [13.7 ac.]

Conserved Open Space

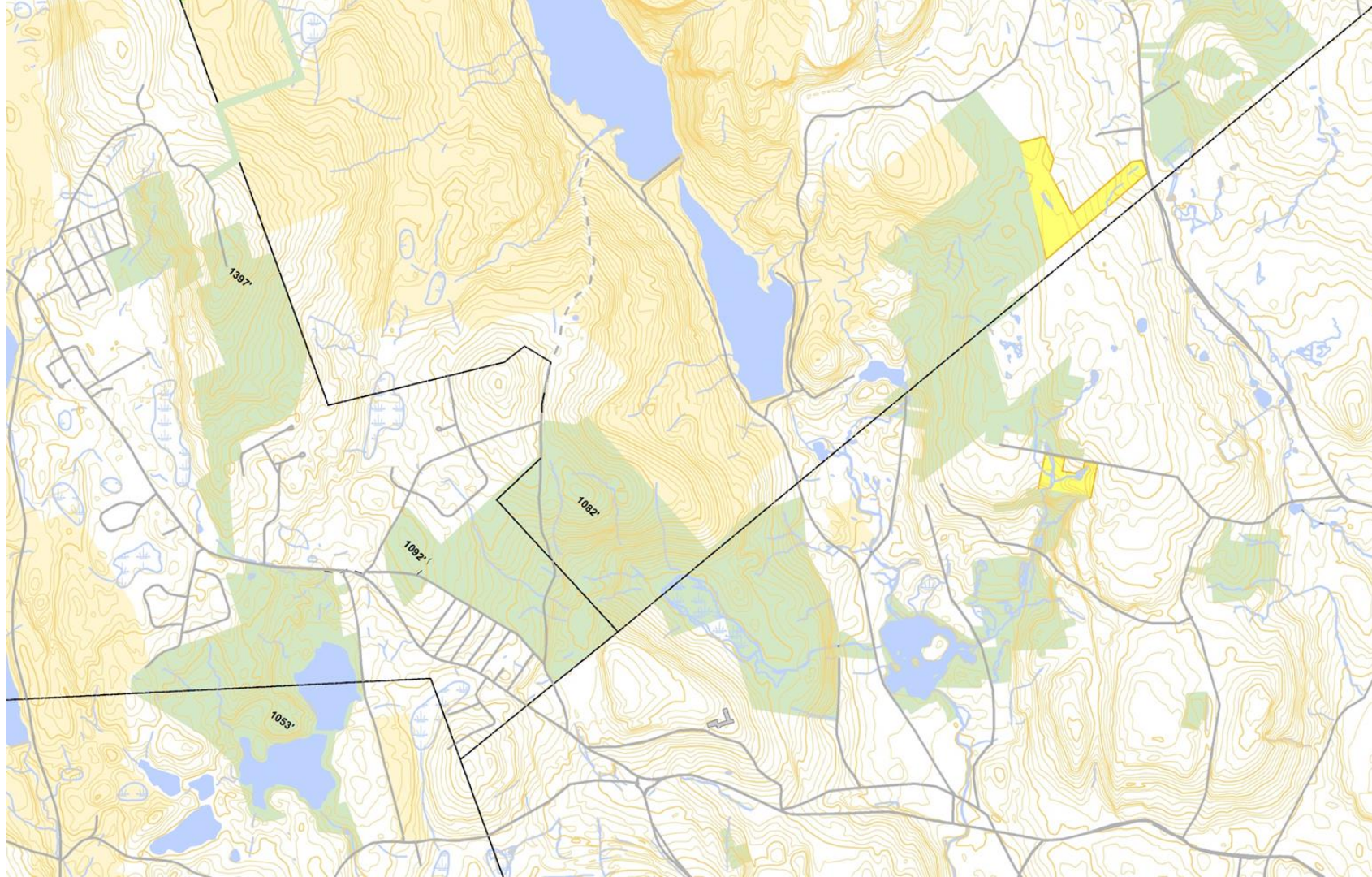
- Conservation Restriction
- Agricultural Preservation Restriction
- CRA/PR Combination
- Other Legal Interest
- DCR State Parks & Recreation
- DCR/DFG
- Department of Fish & Game
- DCR Urban Parks & Recreation
- DCR Water Supply Protection
- Department of Agricultural Resources
- Commonwealth of Massachusetts
- Municipal
- Federal
- Land Trust
- Conservation Organization
- Public Non-Profit
- Non-Profit
- Private
- Other

GWLT Lands

- Fee Owned (01)
- Conservation Restriction (02)
- Annex Easement (01)
- Trail Easement (02)



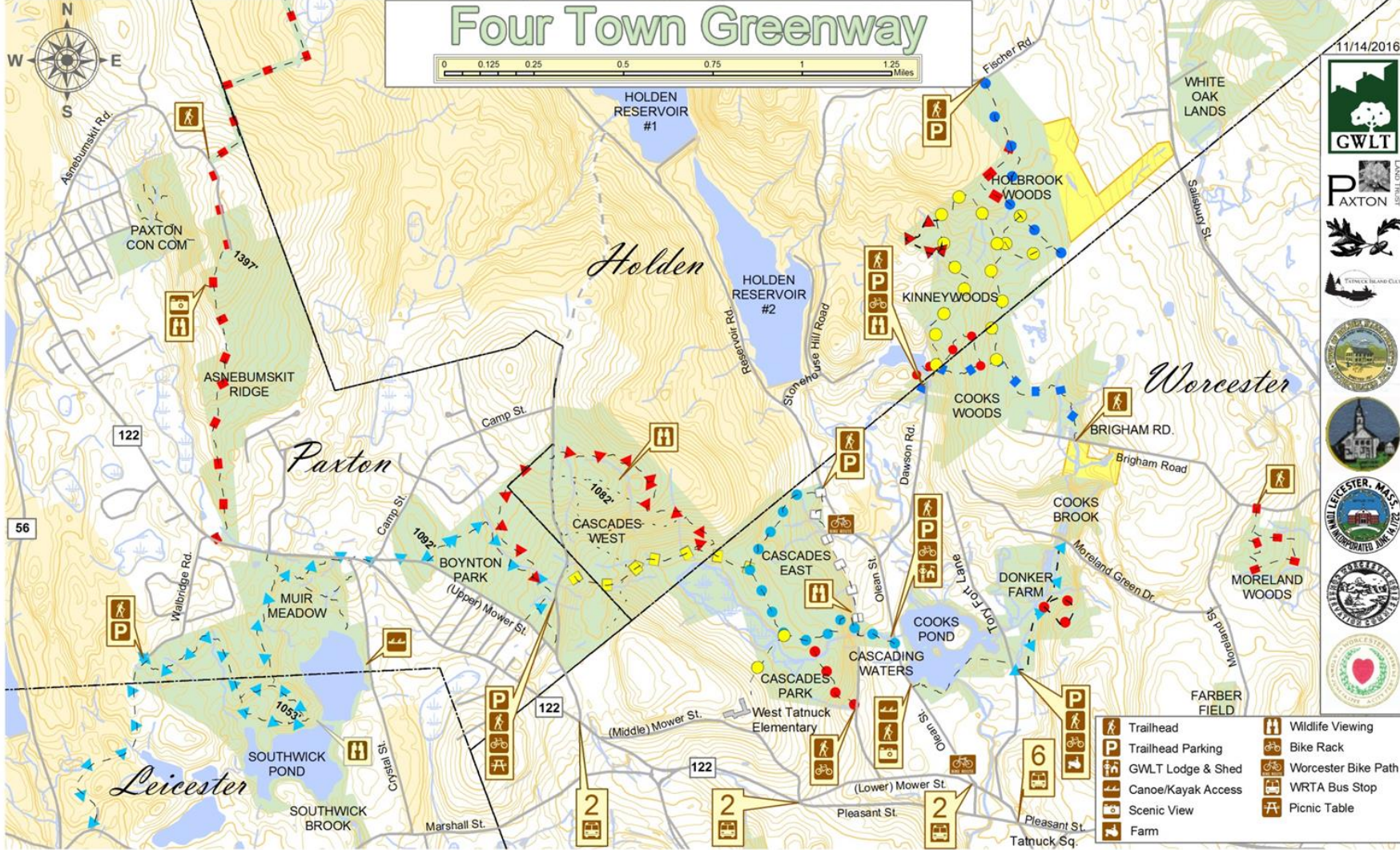
08/31/2016
www.gwlt.org



Less Orthodox Tools

- Utility Corridors
- “Paper” Streets
- Side-yard & Rear-yard Setbacks
- Tax Title Properties
- Regulatory Zones (Wetland Setbacks)
- Demo
- Brownfields -> Greenfields (Groundworks)
- Highway Cow Tunnel & RxR Pedestrian Underpass
- Rail to Trail Conversion
- Permitting Process

Four Town Greenway



11/14/2016



- | | | | |
|--|--------------------|--|---------------------|
| | Trailhead | | Wildlife Viewing |
| | Trailhead Parking | | Bike Rack |
| | GWLT Lodge & Shed | | Worcester Bike Path |
| | Canoe/Kayak Access | | WRTA Bus Stop |
| | Scenic View | | Picnic Table |
| | Farm | | |

The Four Town Greenbelt

Acres	Name	Owner	CR Holder
122.99	Cascades West	GWLT	
113.77	Southwick Pond	GWLT -	CR Worc. Resv.
002.74	Cascading Waters	GWLT -	CR Worc. ConCom
004.61	Southwick Brook	GWLT -	CR Leicester ConCom
030.86	Cascades East	Worc. ConCom -	CR GWLT
033.00	Cook's Pond	Private -	CR Worc. ConCom & GWLT
057.00	Muir Meadow	Worc. Resv. -	CR Paxton ConCom & GWLT
114.67	Boynton Park	Worc. Parks	
070.70	Cascades Park	Worc. Parks	
057.23	Cook's Woods	Worc. ConCom	
052.65	KinneyWoods	GWLT -	CR WOLCS & Hold ConCom
004.09	Brigham Road	GWLT	
015.34	Cook's Brook	GWLT -	CR Worc. ConCom
023.82	Donker Farm	GWLT -	CR Worc. ConCom
100.00	Asnebumskit Ridge	GWLT -	CR Worc. Resv.
0008.6	Donker Farm North	GWLT -	CR Worc. ConCom
110.6	Reservoir Transfers	Worc. Resv.	
4.1	Reservoir Easements	GWLT	
918.77	Total		