

Connecting the Dots in the Pioneer Valley of Massachusetts



Wildlands and Woodlands

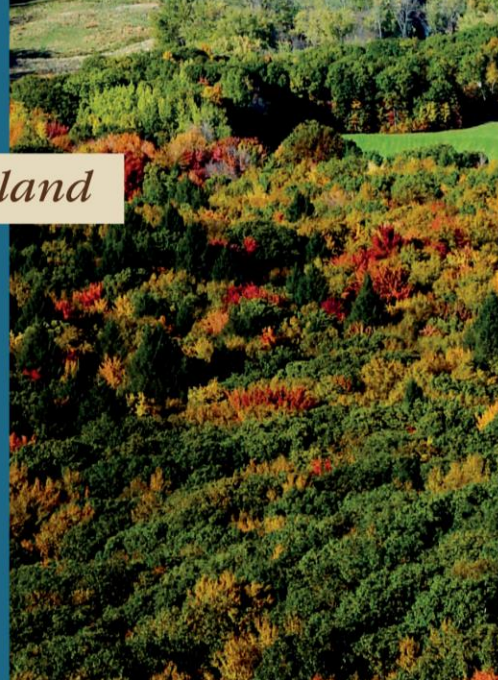


Farmlands and Communities

Broadening the Vision for New England



2017



A New England Food Vision



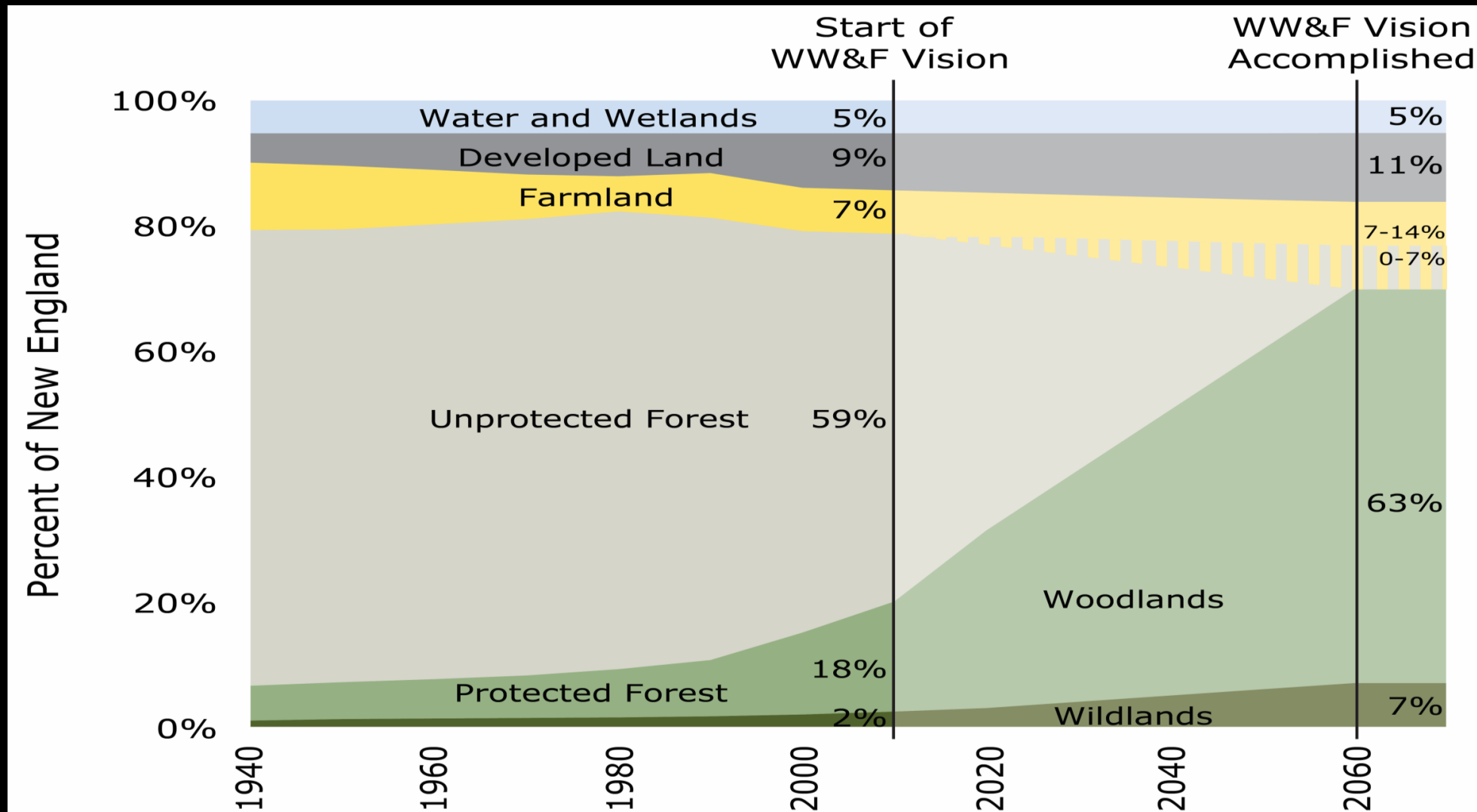
- Healthy Food for All
- Sustainable Farming and Fishing
- Thriving Communities

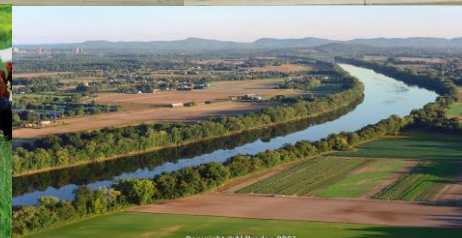
2014



Wildlands and Woodlands Vision

- 30 million acres of conserved *forest* – 90% actively managed woodland; 10% wildland reserves
- 3-6 million acres of conserved *farmland*
- 5 million acres of land *developed* to benefit from and complement the conserved landscape

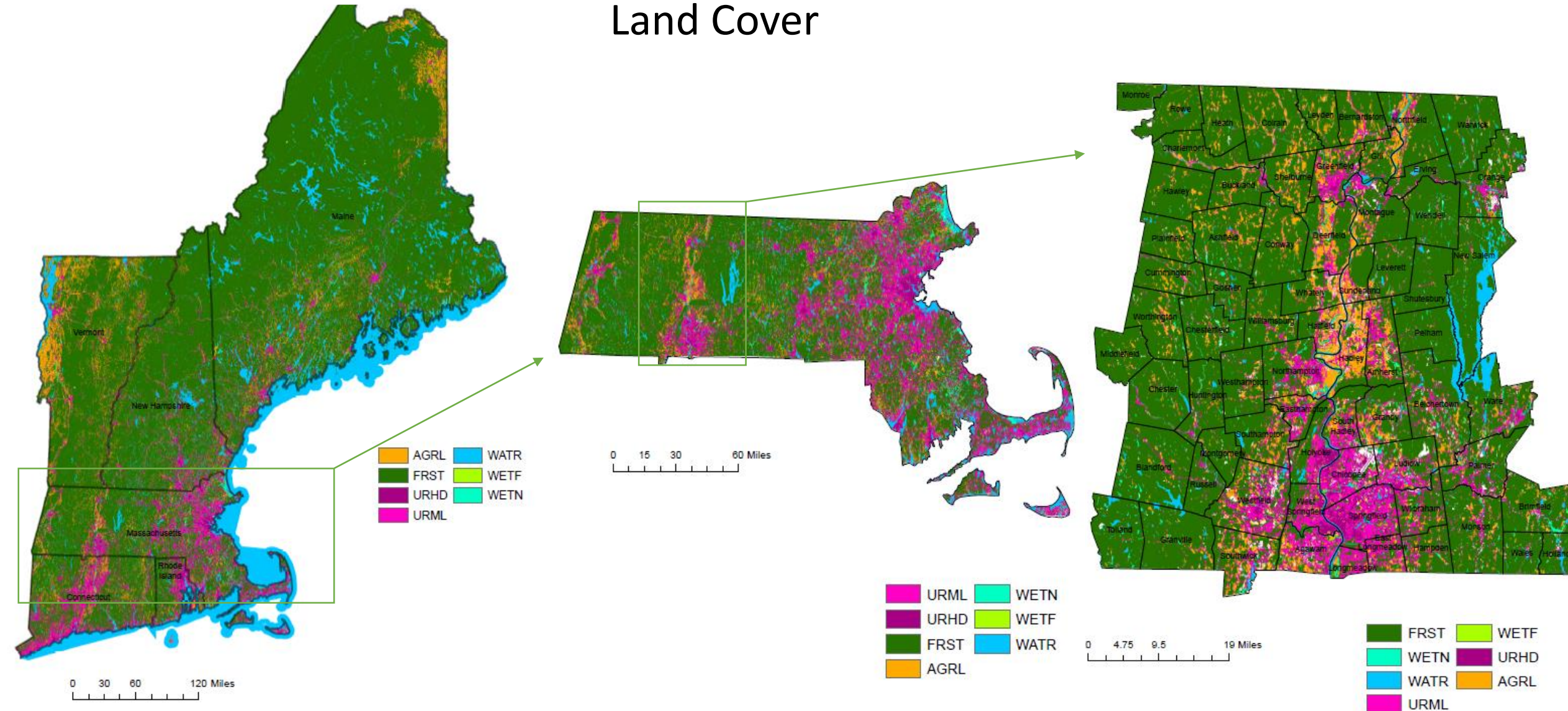




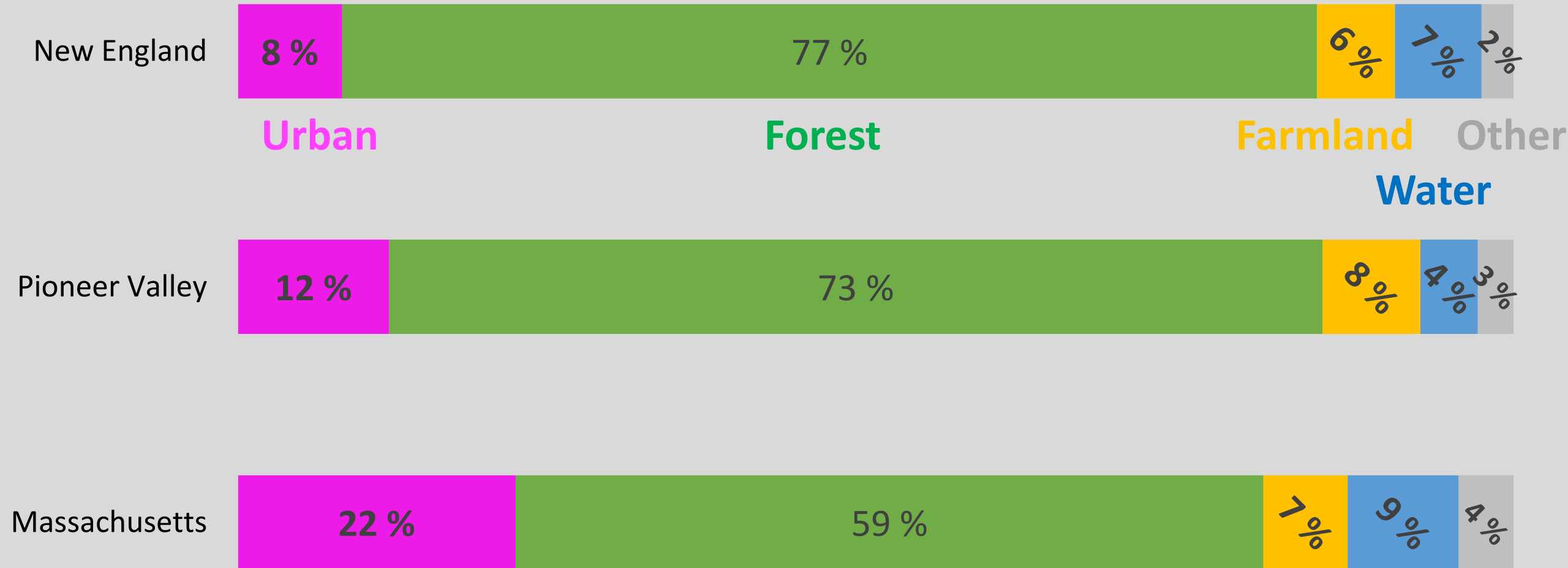
Harvard College Conservation Society -- Harvard Forest Summer Interns

First Product – June 2018

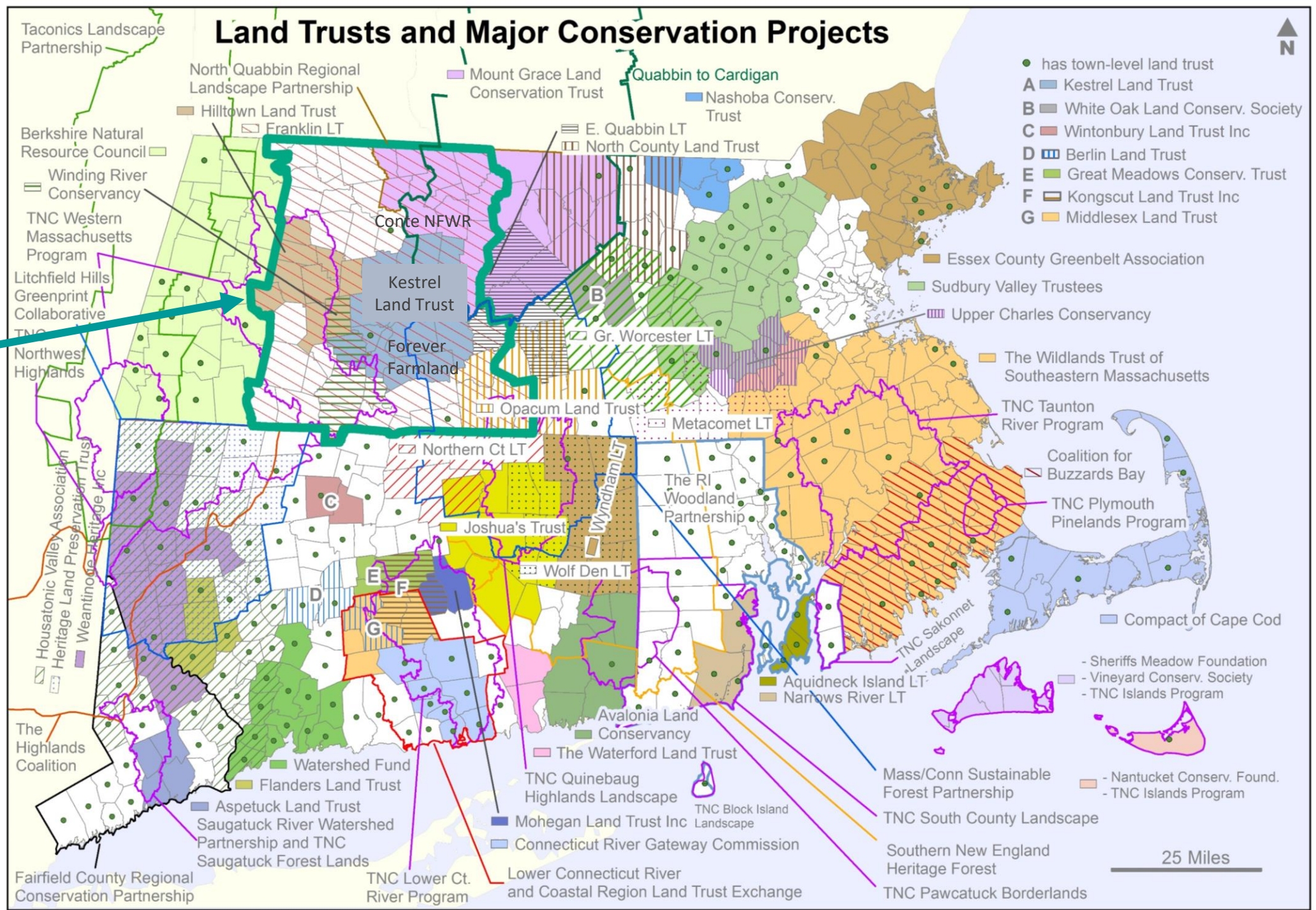
Land Cover



Land Cover

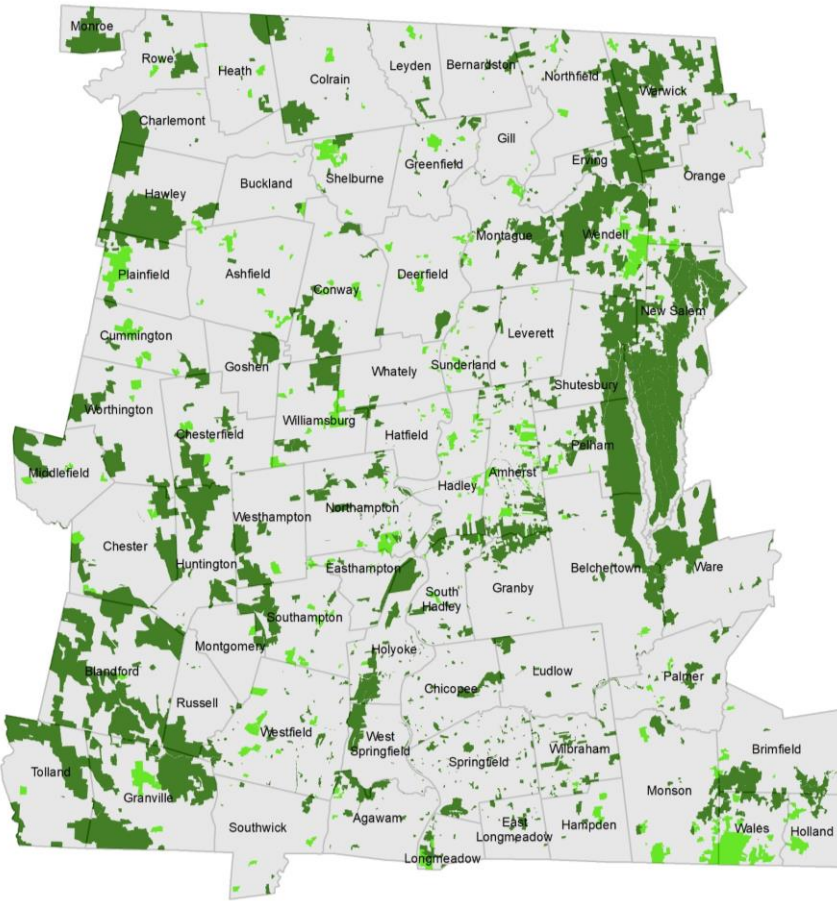


Pioneer Valley Region

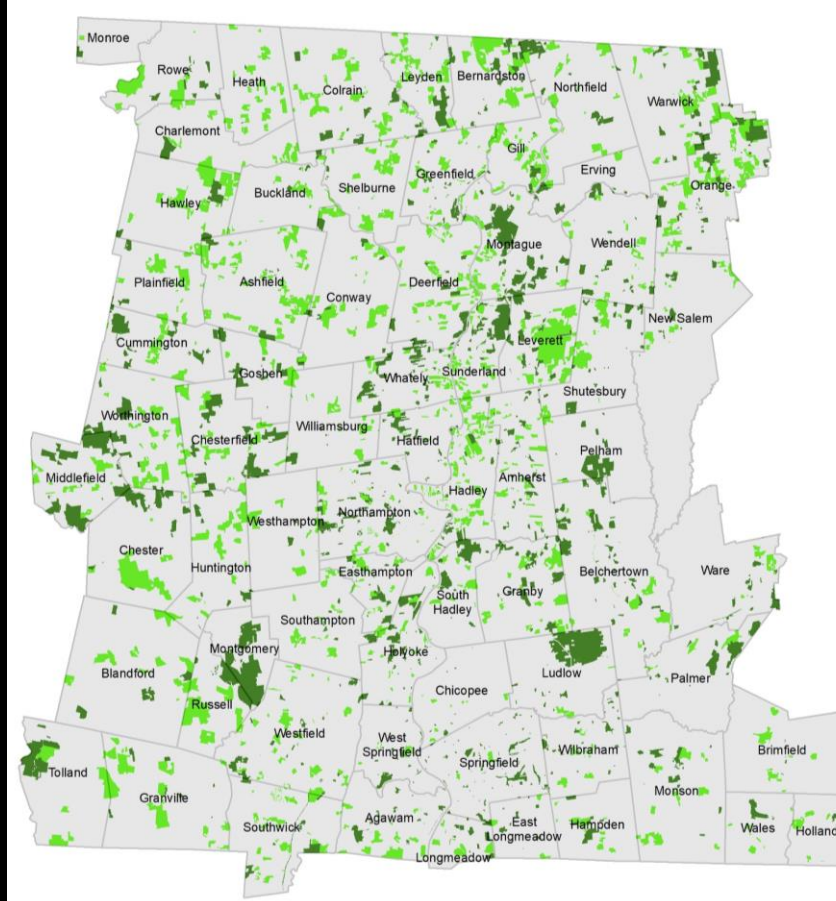


History of Land Protection

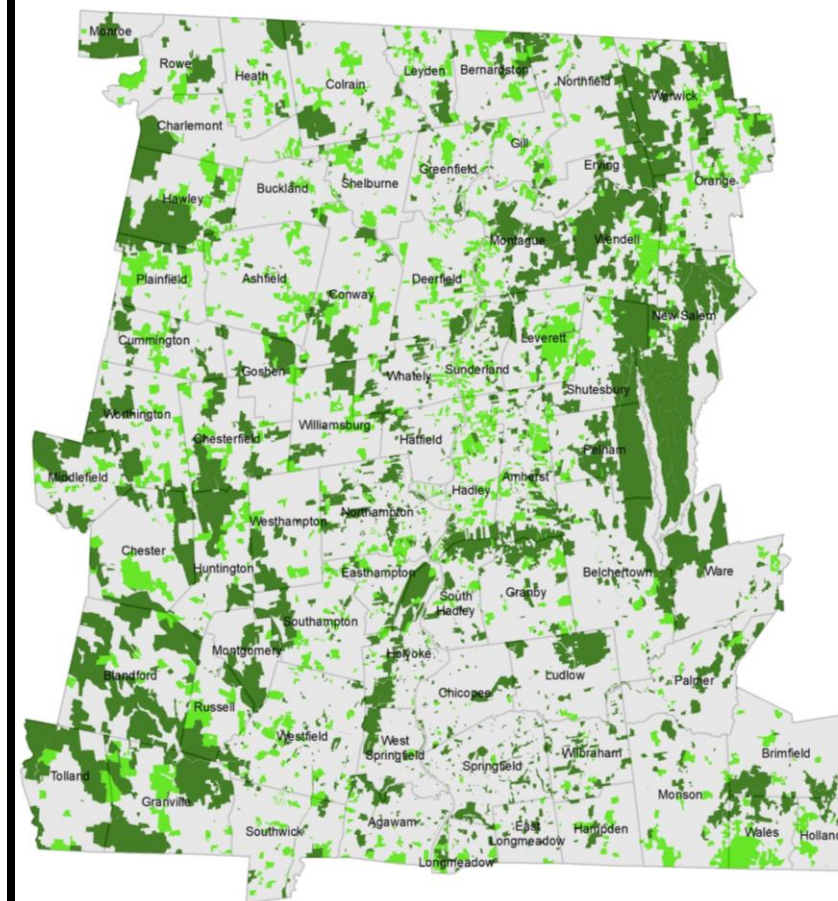
Pre-1990



1990 - 2017



All Conservation Land

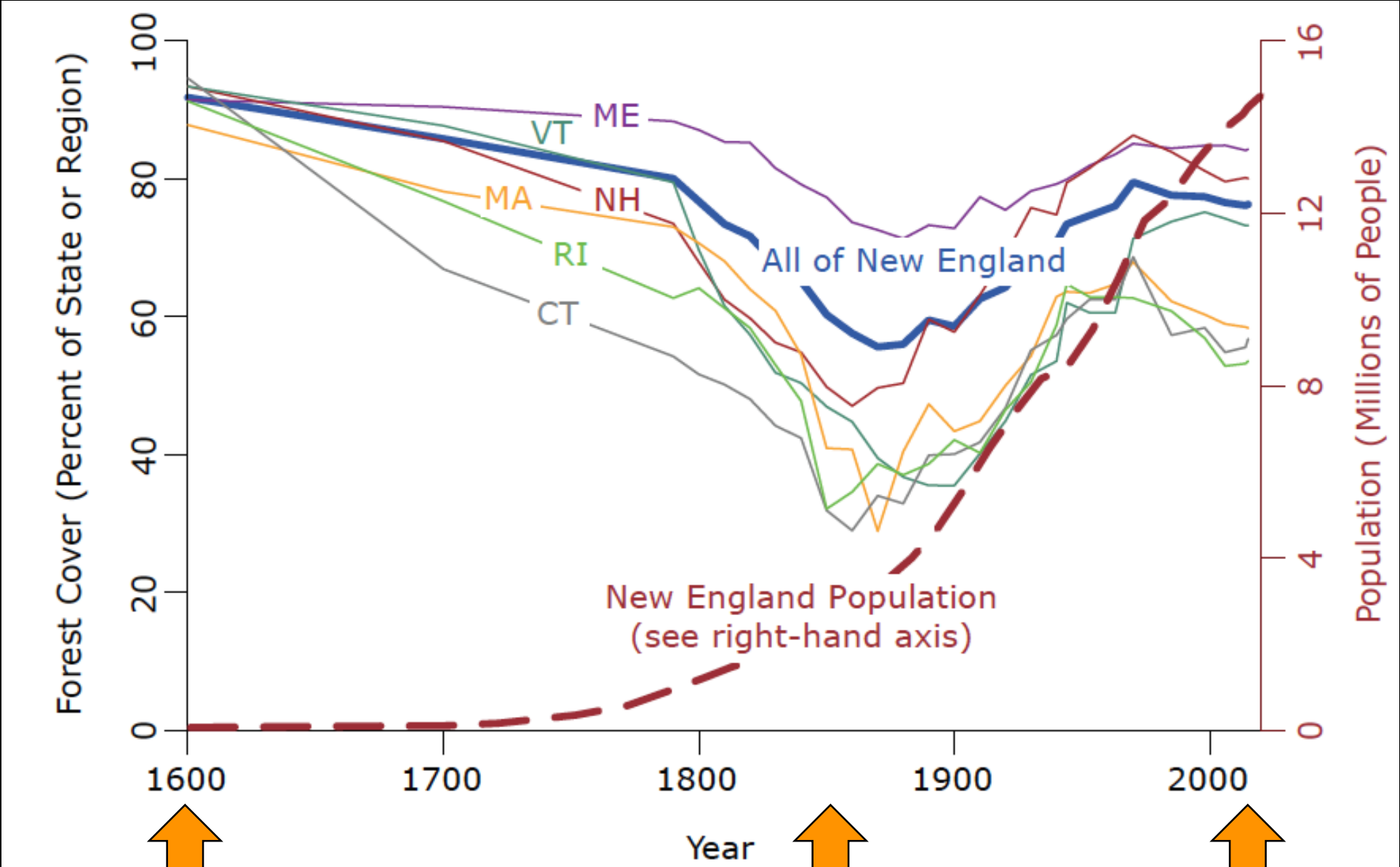


Publicly Held Conservation Land



Privately Held Conservation Land

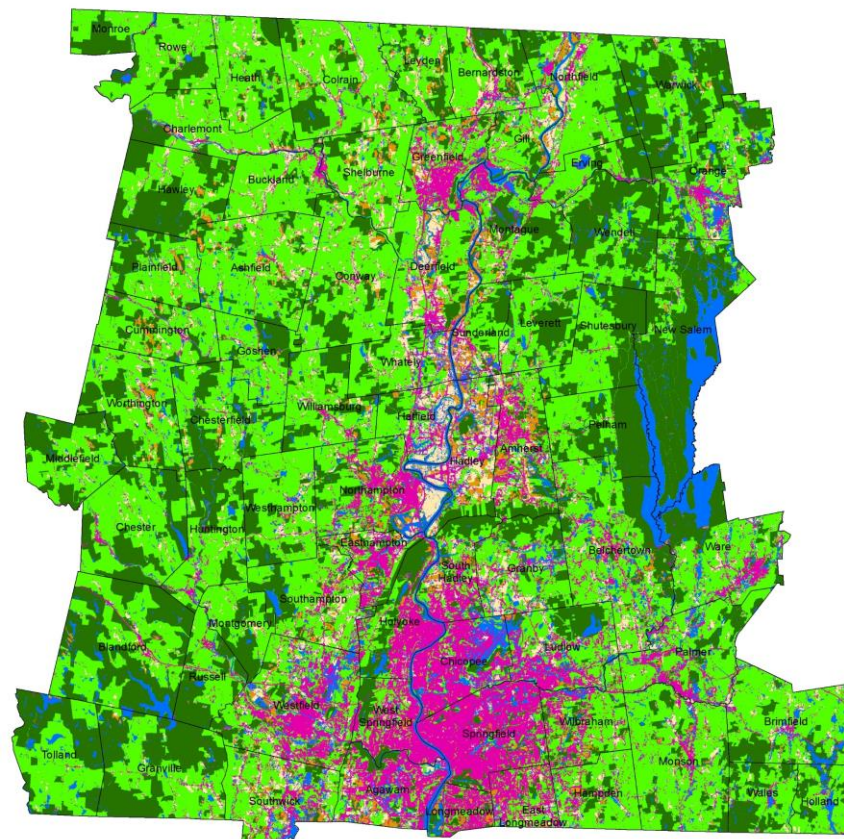
Scenario Planning in New England History: 1600, 1850, and Today



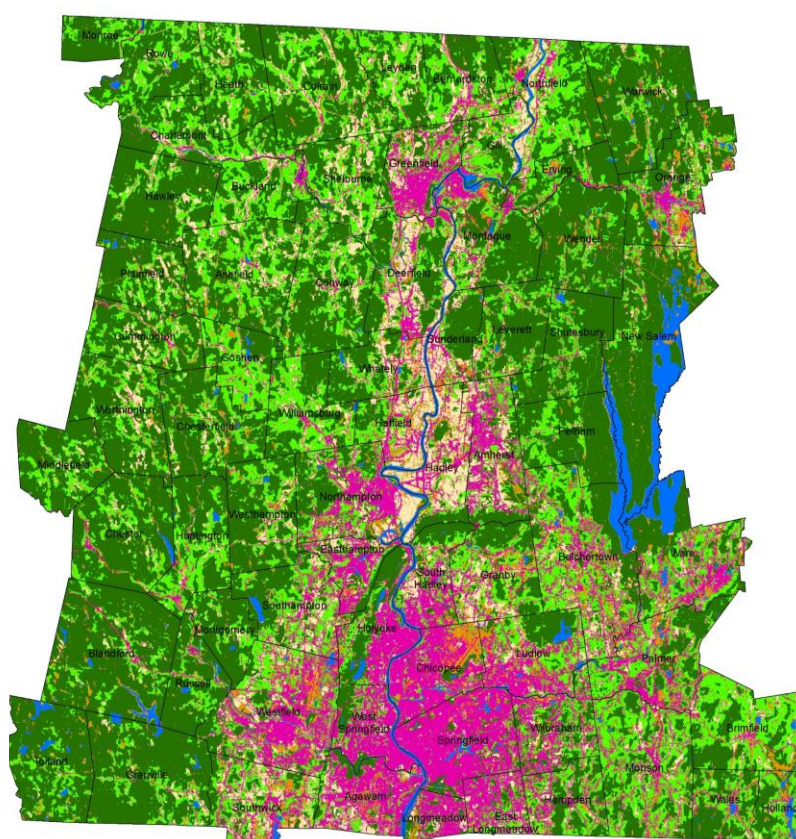


Changes to the Land

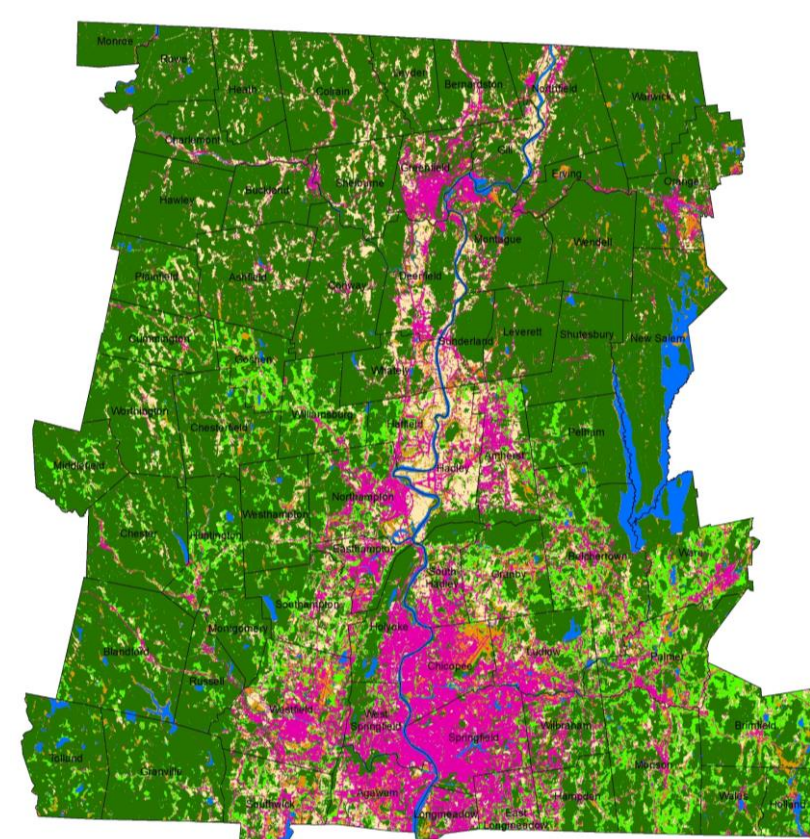
Four Scenarios for the Future of the Massachusetts Landscape



2010



2060 -- Recent Trends

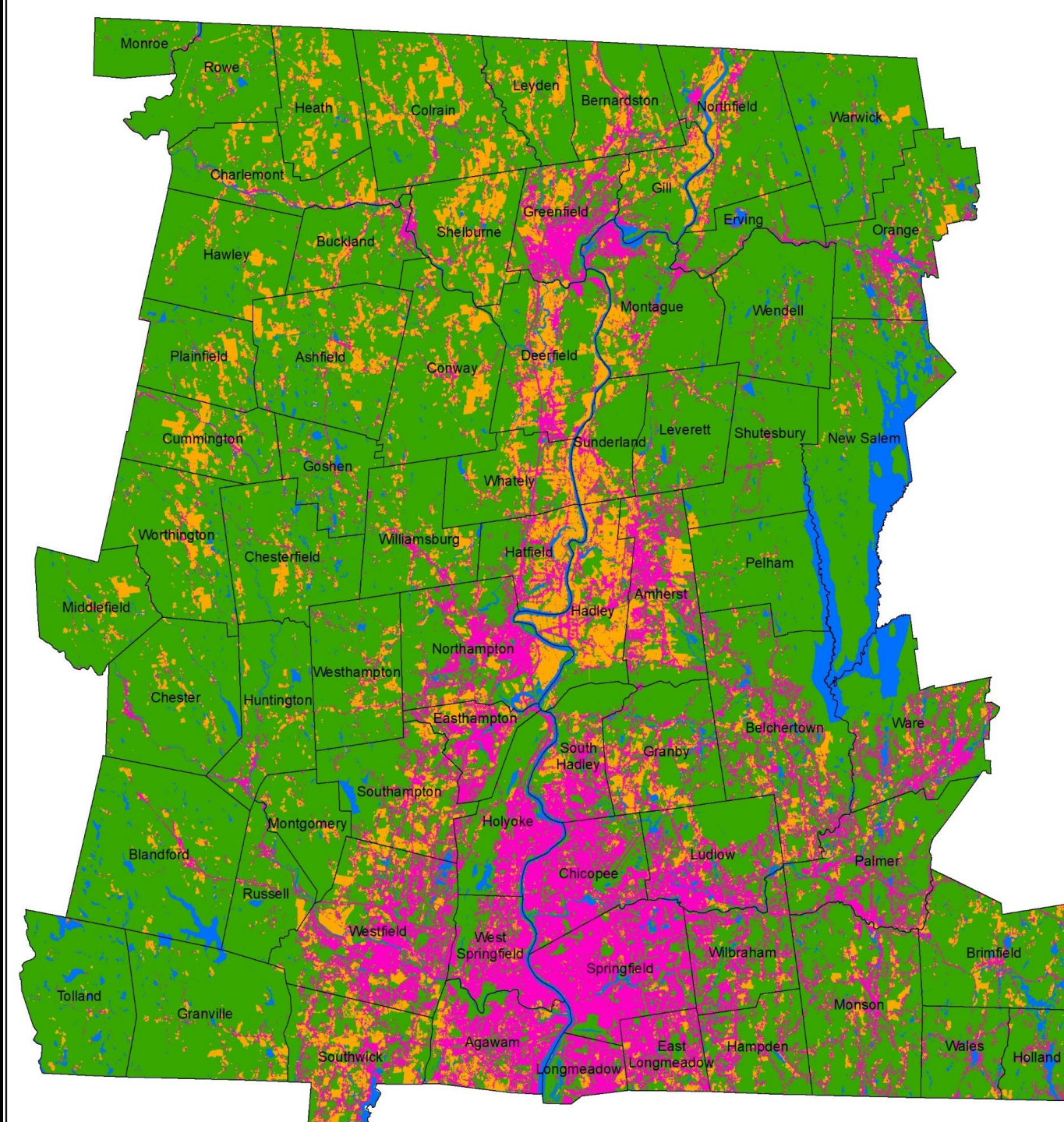


2060 Connected Communities

Urban	12 %	15 %	13 %
Unprotect. Forest	48 %	25 %	10 %
Protected Forest	25 %	46 %	62 %
Unprotec. Farmland	6 %	3 %	2 %
Protected Farmland	2 %	5 %	7 %
Other	7 %	7 %	7 %

Wildlands & Woodlands & New England Food Vision

- Allow development from recent trends
- Expand farmland through the conversion of forests within 30 meters of existing farmland
- Conserve all remaining forest

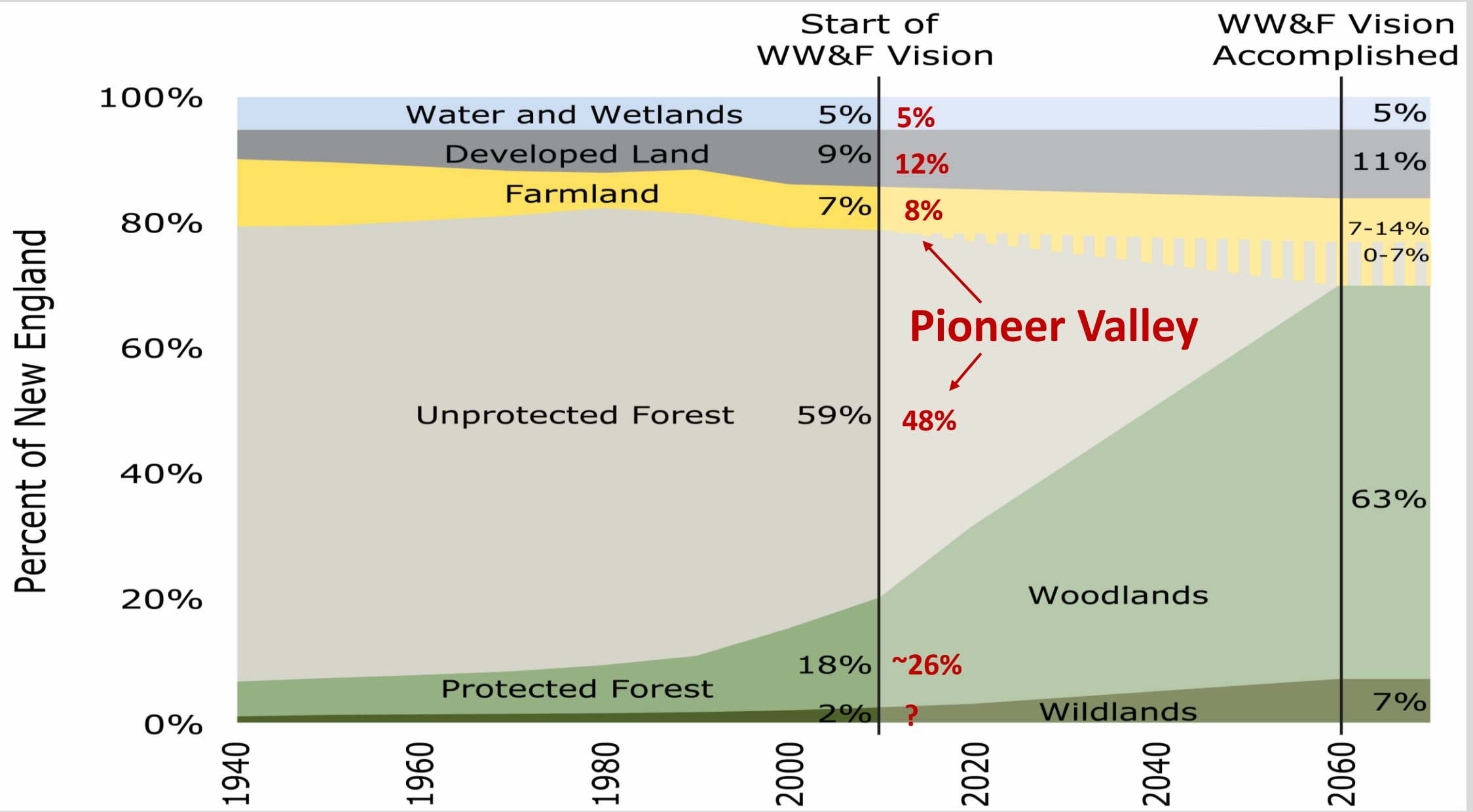


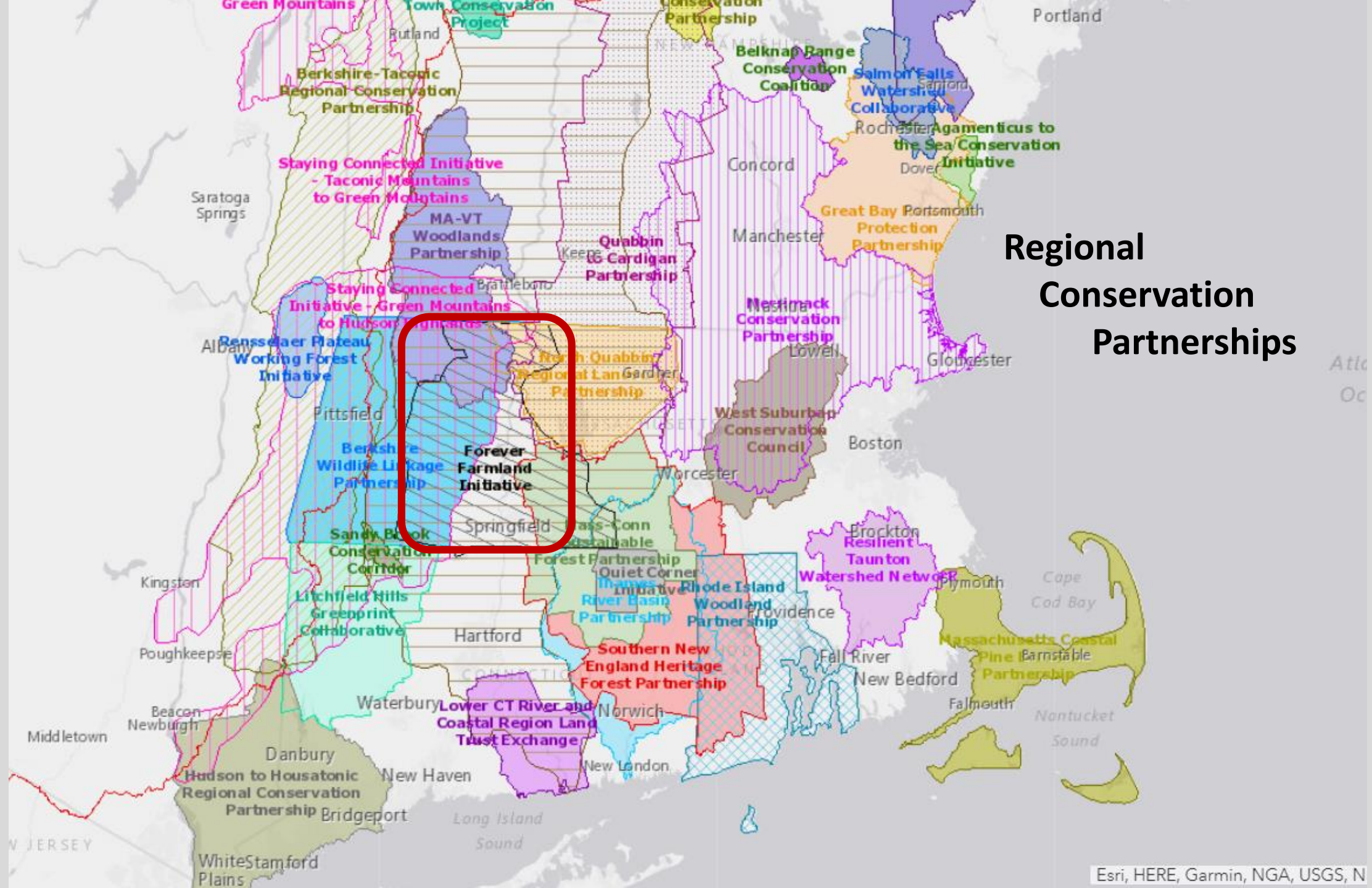


Jon Hamilton, Annina Kennedy Yoon, Kristin Deboer, Brian Hall, Hannah Robbins,
Bill Labich , Jonathan Thompson, Josh Plisinski
and the Kestrel staff and board

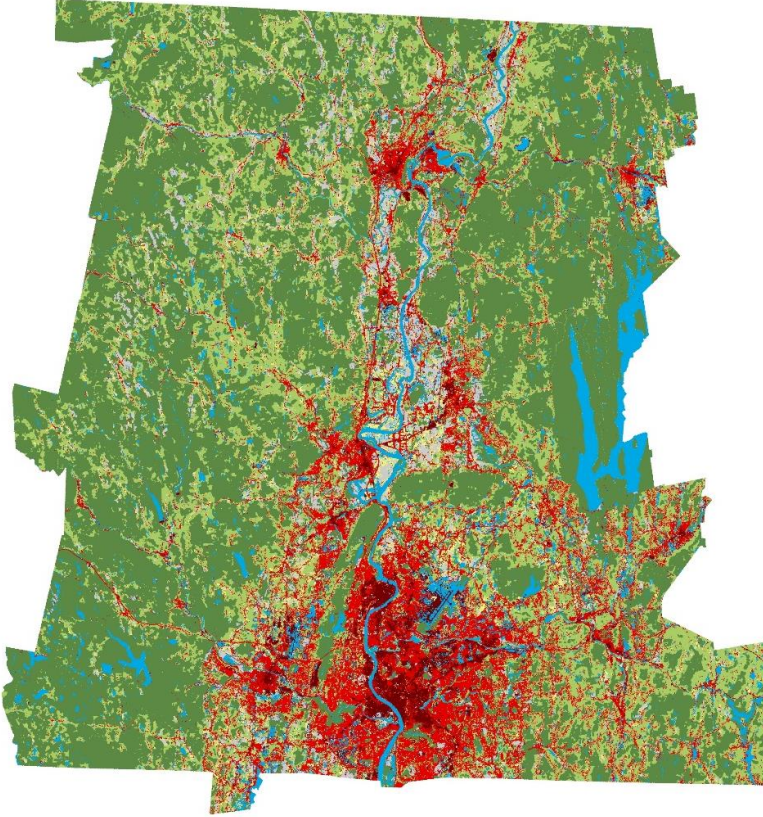
Potential Backpocket Slides

Wildlands and Woodlands Vision

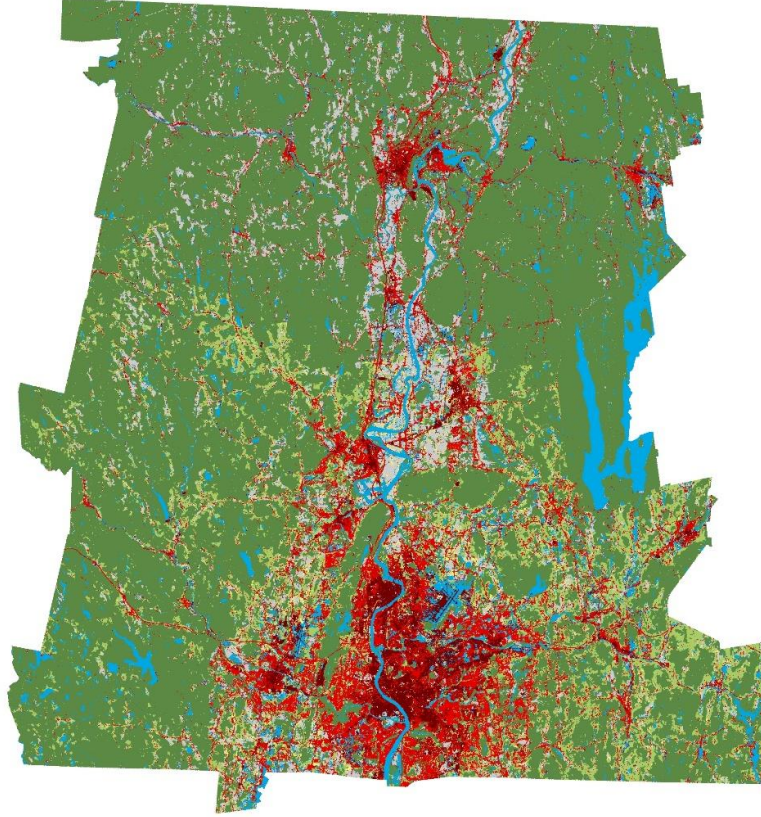




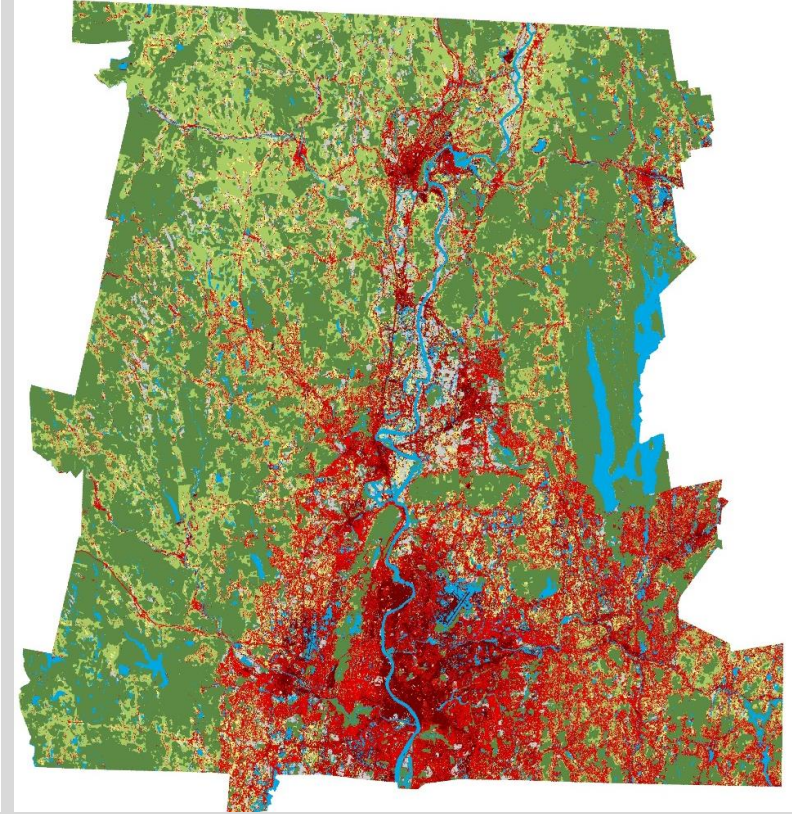
Recent Trends (2060)



Connected Communities (2060)

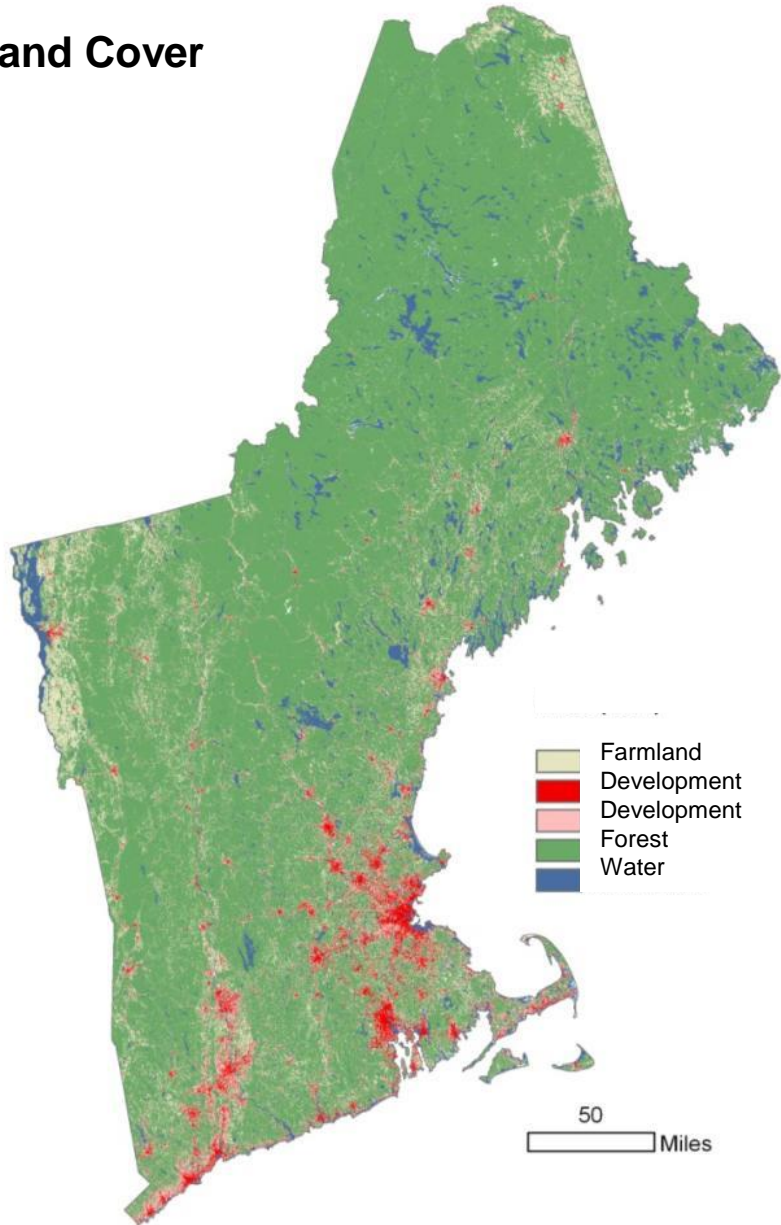


Growing Global (2060)

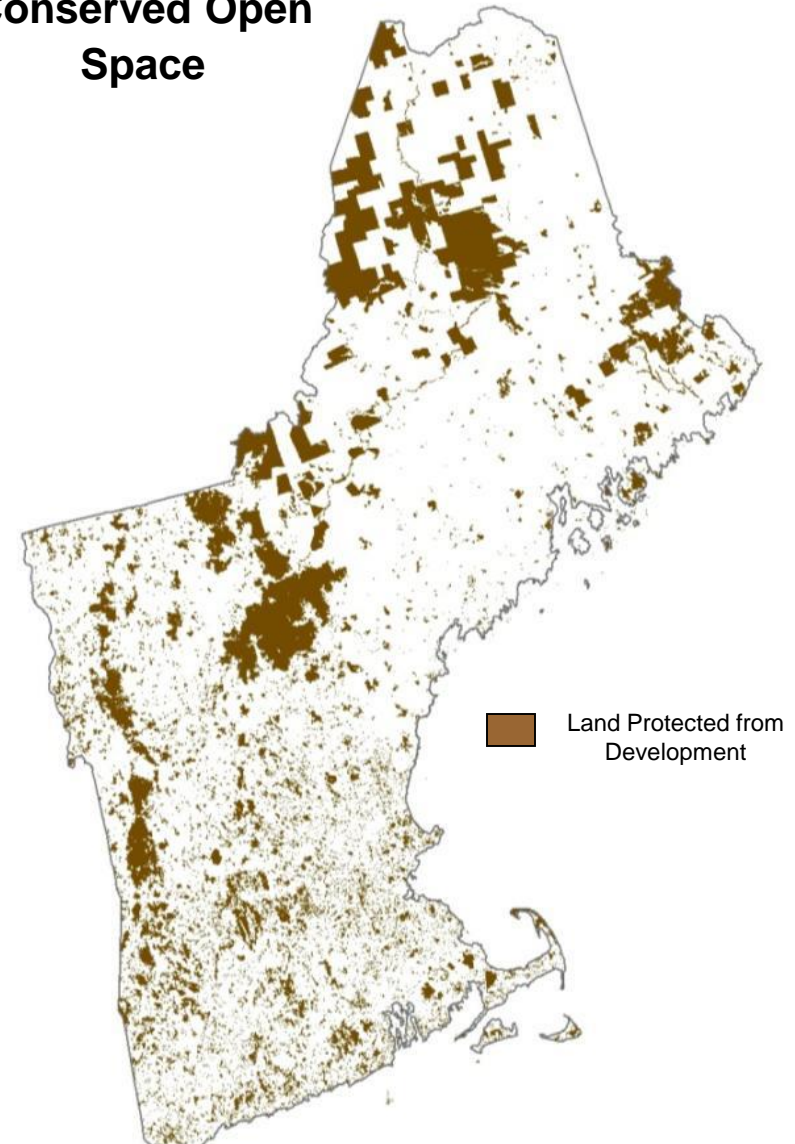


Two Remarkable Products of History

Land Cover



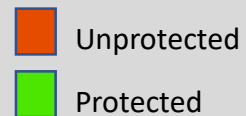
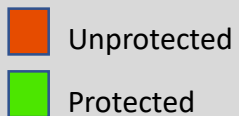
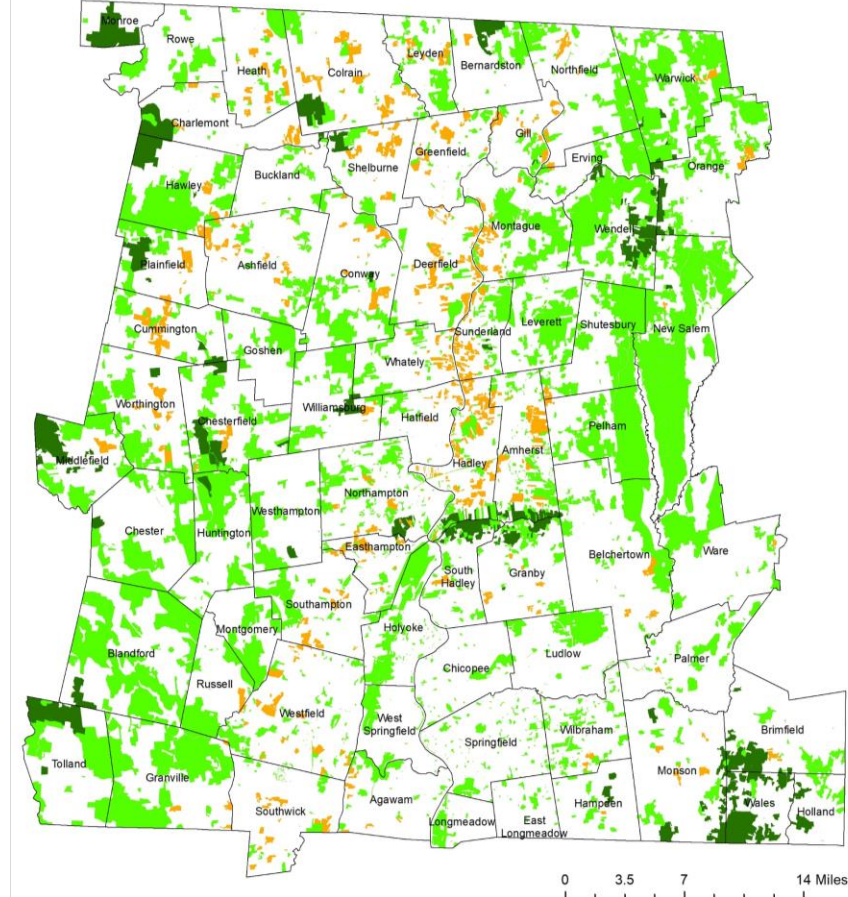
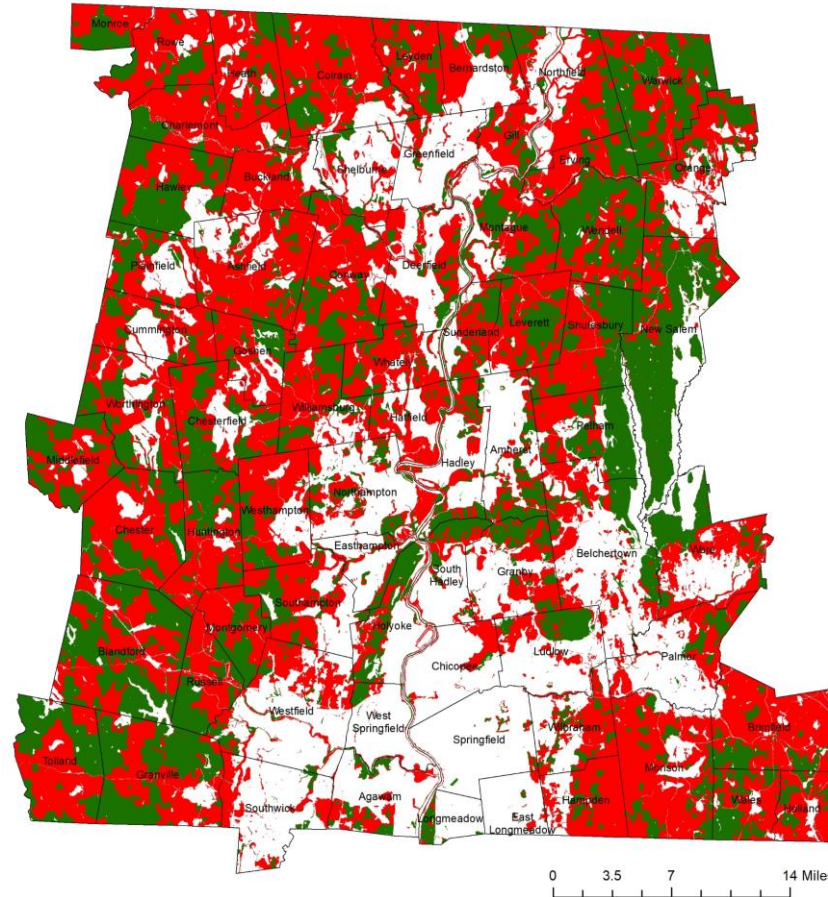
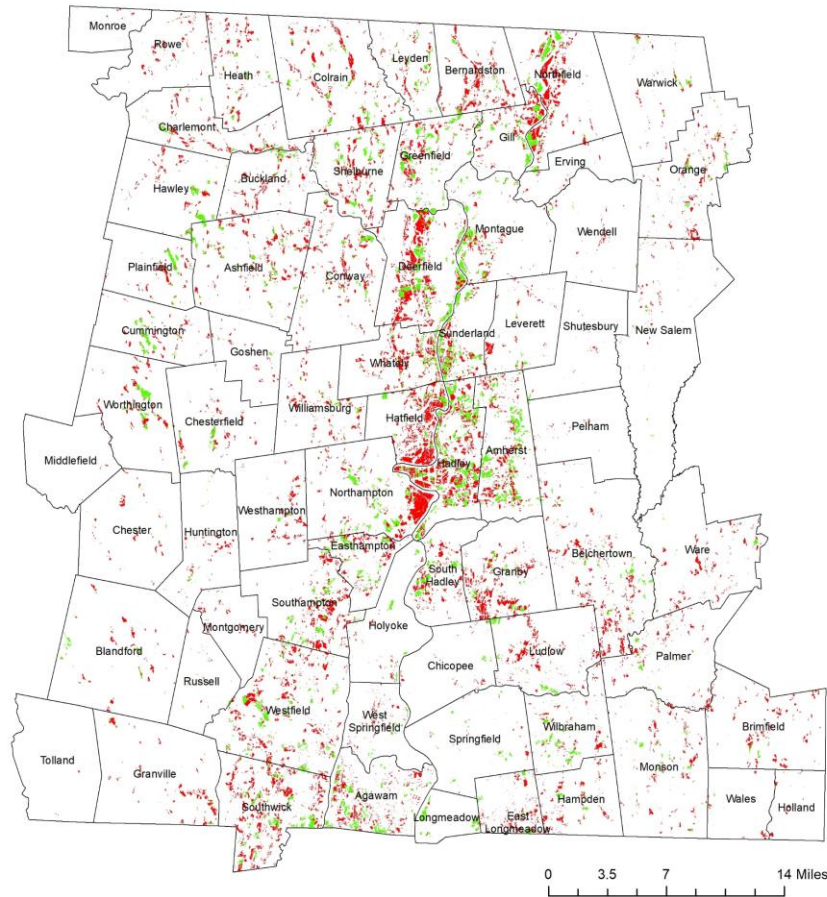
Conserved Open Space

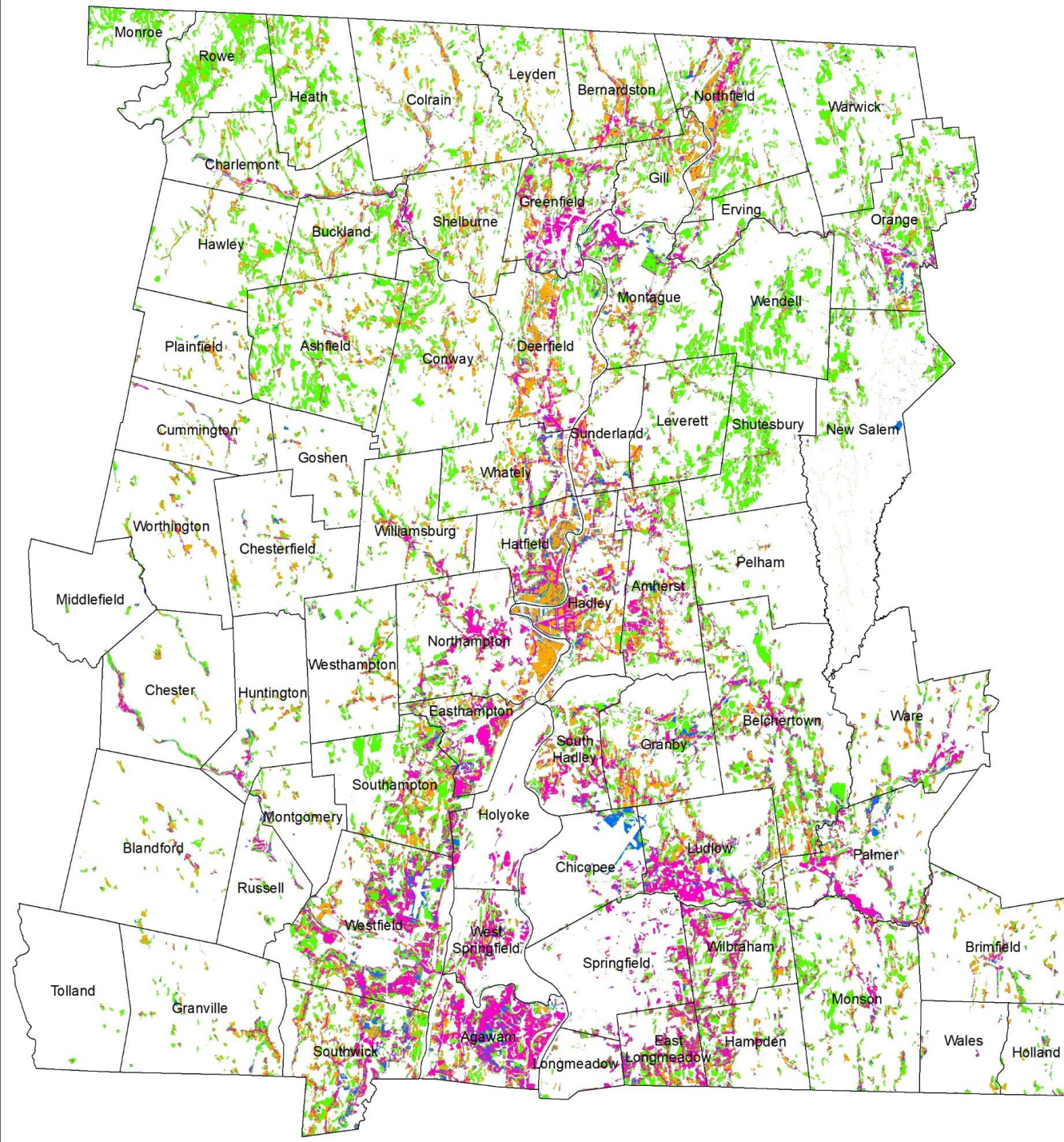


Prime Soils in Agriculture

Ecologically Important Habitat BioMap2, Nature's Network, or CAPS

Protected Wildlands (TNC Gap 1), Woodlands, and Farmland



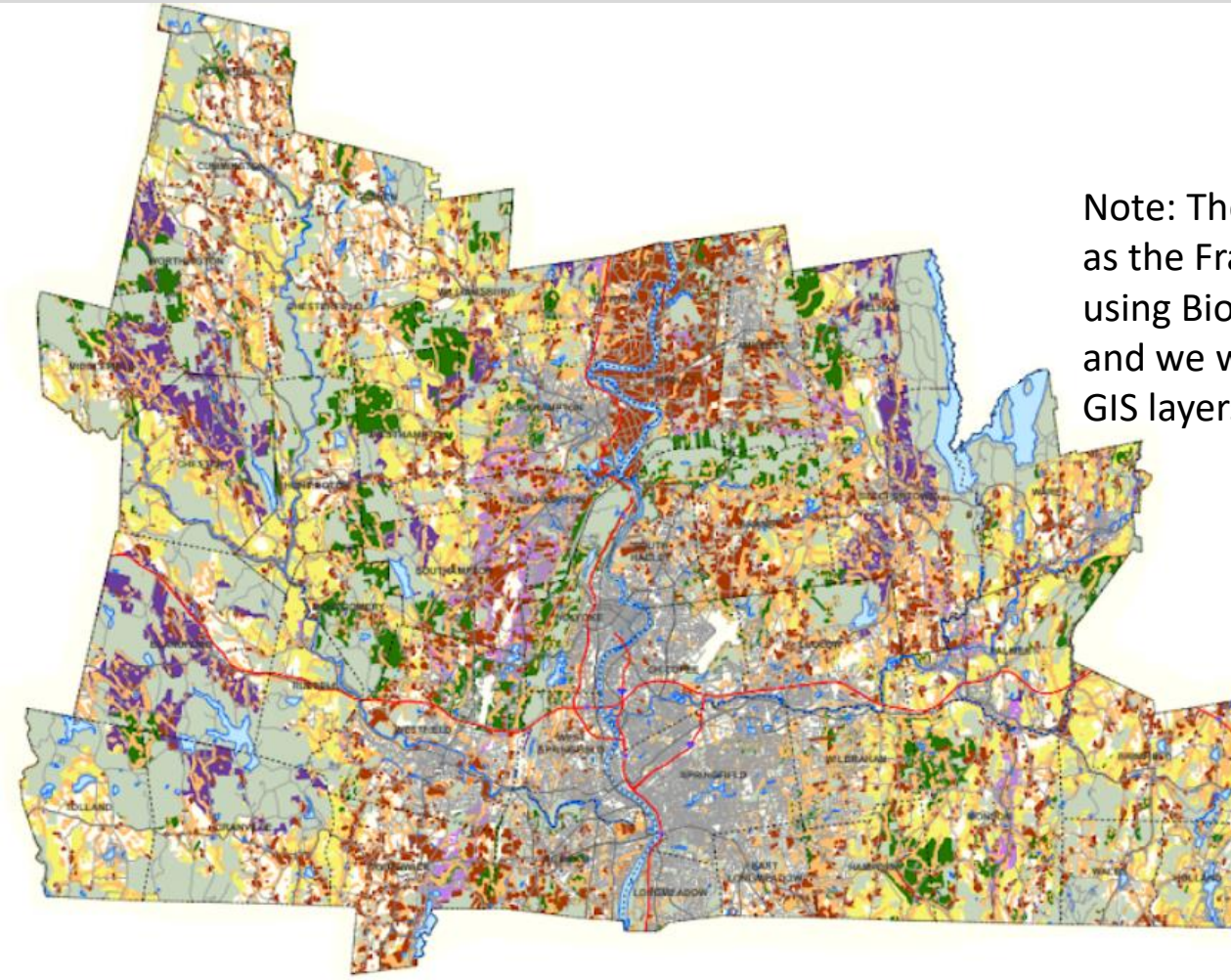


Prime Soil by Land Cover

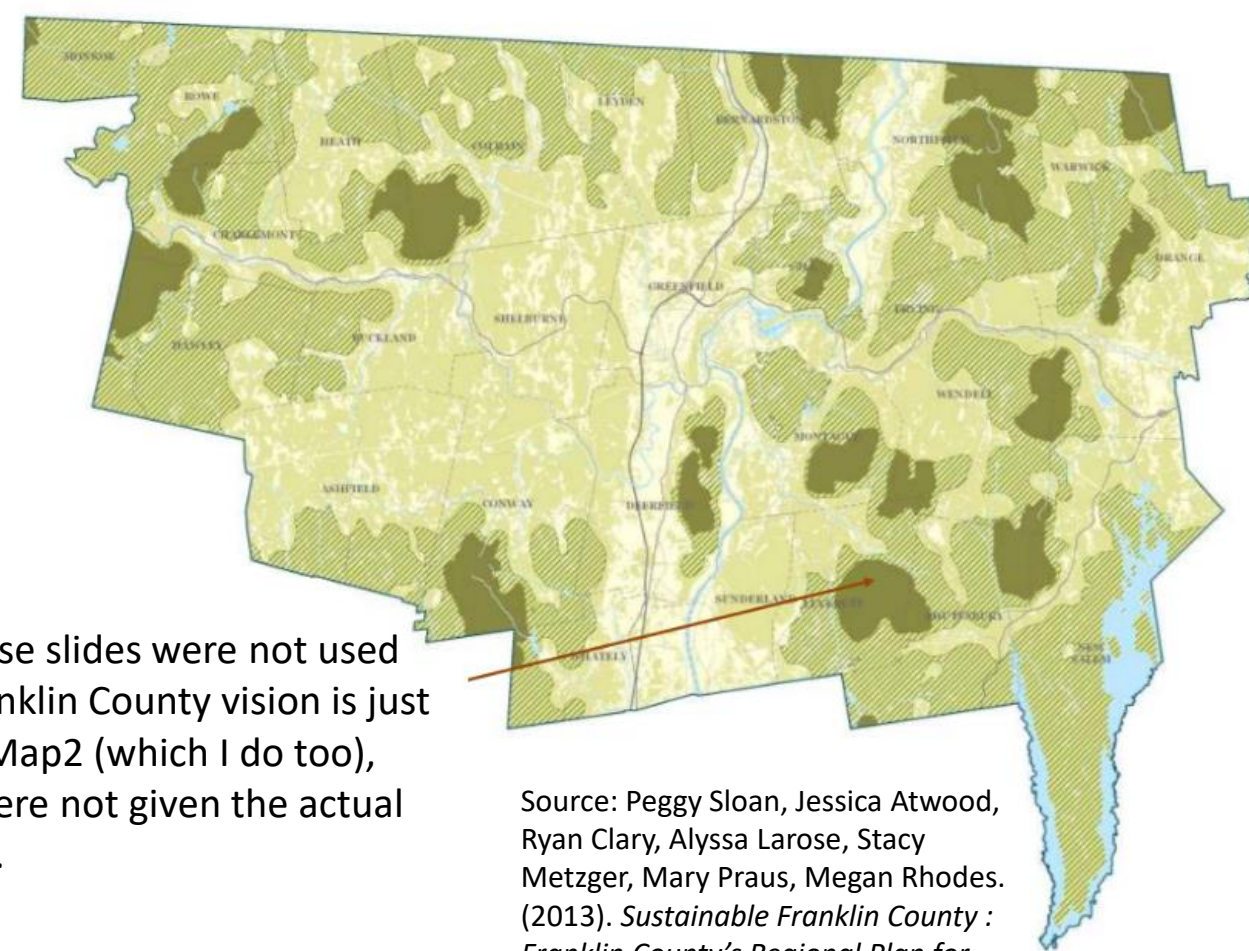
- Prime soil distribution throughout the region
- **Orange** – prime soils currently in agriculture
- **Pink** – prime soils under urban cover
- **Blue** – prime soils under an other category (includes wetlands)
- **Green** – prime soils under forest cover
- Only green is easily convertible to agriculture

Map from: IMPORTANT_POS_Soil_BM2_NN_Overlap_Map.mxd

These show the visions for the region from the Pioneer Valley Planning Commission (below) and the Franklin Regional Council of Governments (right). The darker or mixed colors are the priority lands for conservation.



Note: These slides were not used as the Franklin County vision is just using BioMap2 (which I do too), and we were not given the actual GIS layers.



Source: Peggy Sloan, Jessica Atwood, Ryan Clary, Alyssa Larose, Stacy Metzger, Mary Praus, Megan Rhodes. (2013). *Sustainable Franklin County : Franklin County's Regional Plan for Sustainable Development*.

Source: Pioneer Valley Planning Commission. (2014). *PVPC RPA-Region Priority Areas for Protection*.