



APPALACHIAN TRAIL
CONSERVANCY®

A.T. Landscape Conservation Initiative

Appalachian Trail Today

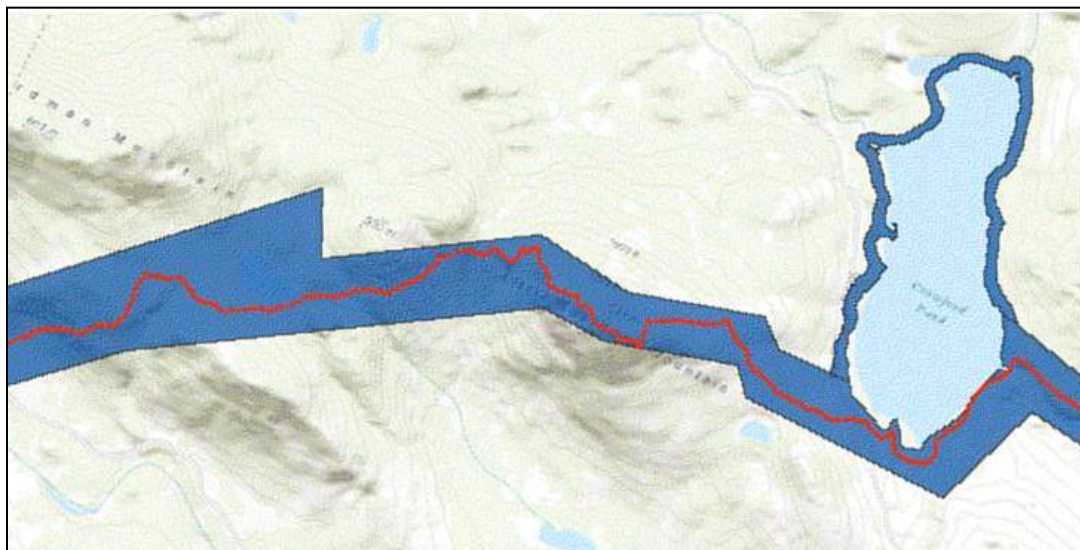
- 2,189 miles through 14 states from Maine to Georgia
- Passes through 8 National Forests, 6 National Parks, dozens of state and other protected lands
- Wildlife habitat with more than 2,000 occurrences of rare, threatened, endangered, and sensitive plant and animal species.
- 99% Protected
- Estimated 3,000,000 visitors per year
- Maintained primarily by volunteers





Land Acquisition Program

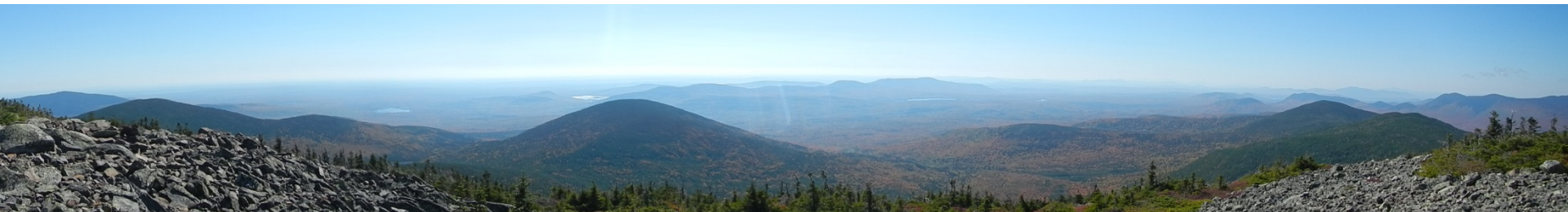
- ⚡ Began in 1968 with passage of the National Trails System Act
- ⚡ Subsequent Amendments and the A.T. Act of 1978 provide funding for acquisition.
- ⚡ Over 3,200 individual land transactions-both fee and easement
- ⚡ Average 1000' wide, minimum necessary to protect A.T. values. Wider in National Forests and Parks.
- ⚡ 120 acres per trail mile= \sim 250,000 protected acres
- ⚡ Long narrow corridor, which continues to expand





Appalachian Trail Conservancy

- ⤴ We are a volunteer-based nonprofit organization dedicated to the protection and management of the natural, scenic, recreational, historic and cultural resources associated with the Appalachian National Scenic Trail.
- ⤴ We serve:
 - an active membership of over 42,000
 - an estimated 2 million visitors per year
- ⤴ We coordinate the efforts of 31 volunteer trail clubs with over 6,800 volunteers

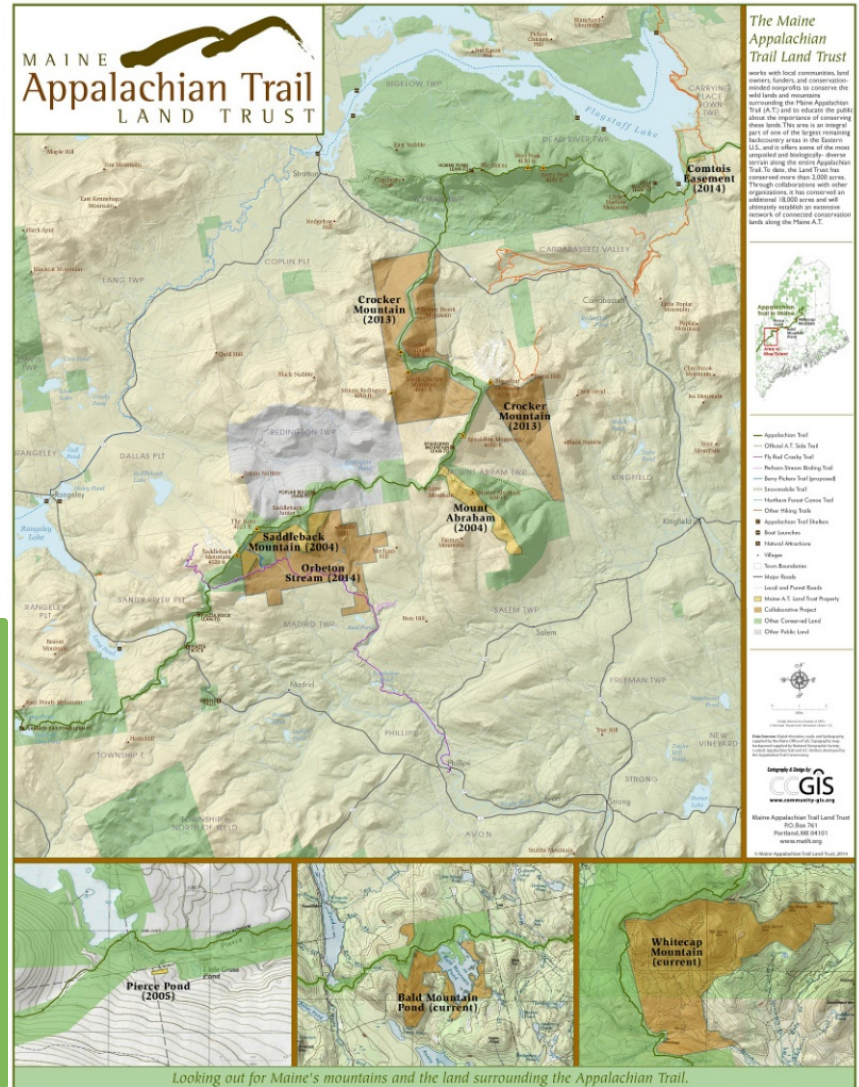


The Appalachian Trail Conservancy's mission is to preserve and manage the Appalachian Trail – ensuring that its vast natural beauty and priceless cultural heritage can be shared and enjoyed today, tomorrow, and for centuries to come.



Maine Appalachian Trail Land Trust

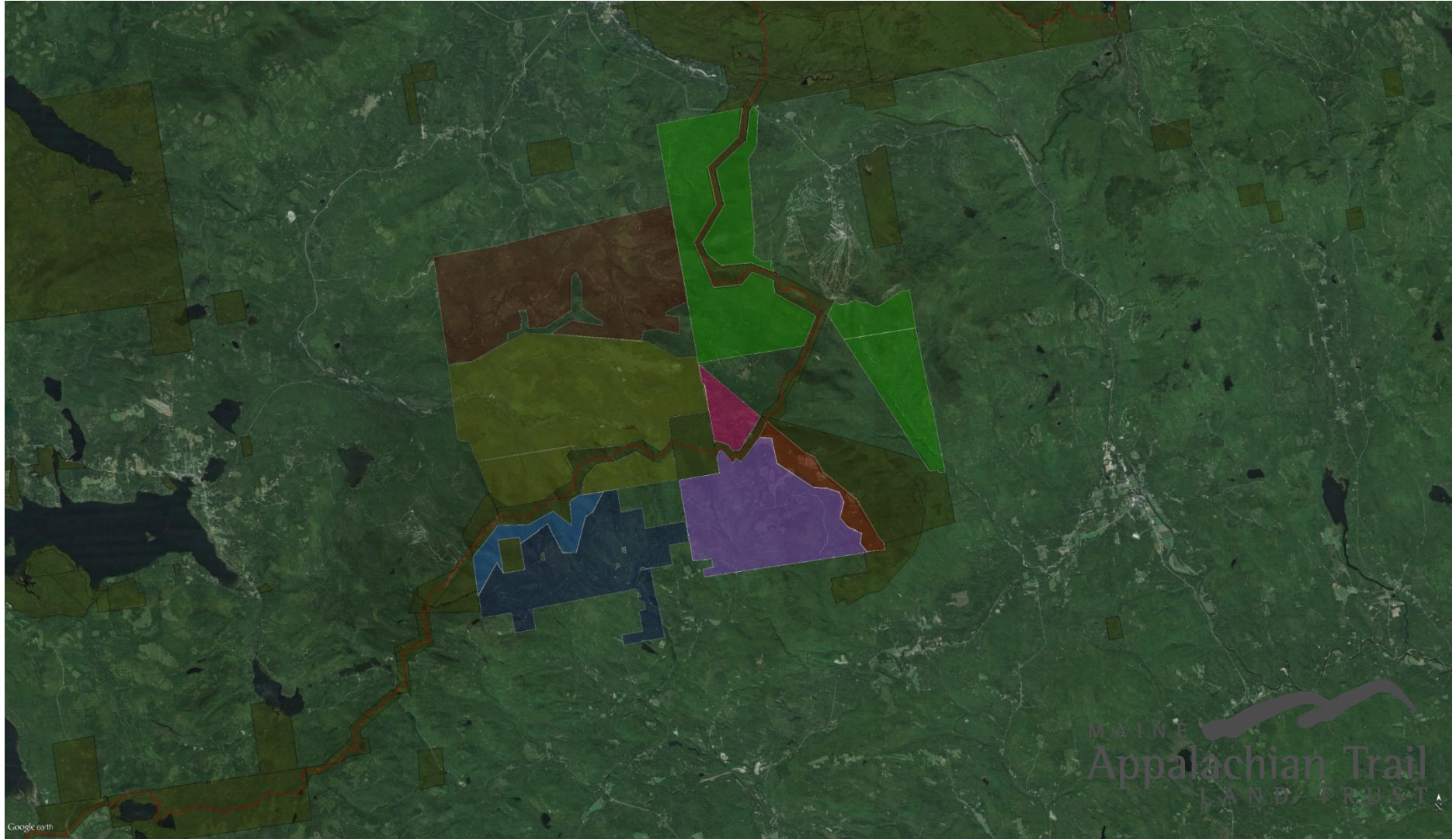
- Mission is to preserve and protect the land along the A.T. in Maine for public benefit
- High Peaks Initiative RCP started in 2006
- High Peaks conservation land 2002 – **0 acres**
- High Peaks conservation land 2017 – **47,600 acres (hopefully!)**





Google earth

MAINE 
Appalachian Trail
LAND TRUST





Building on Benton Mackaye's Original Vision



“Let us assume the existence of a giant standing high on the skyline along these (Appalachian) mountain ridges, his head just scraping these floating clouds. What would he see from this skyline as he strode along its length from north to south?” (Appalachian Trail founder Benton MacKaye, 1921)



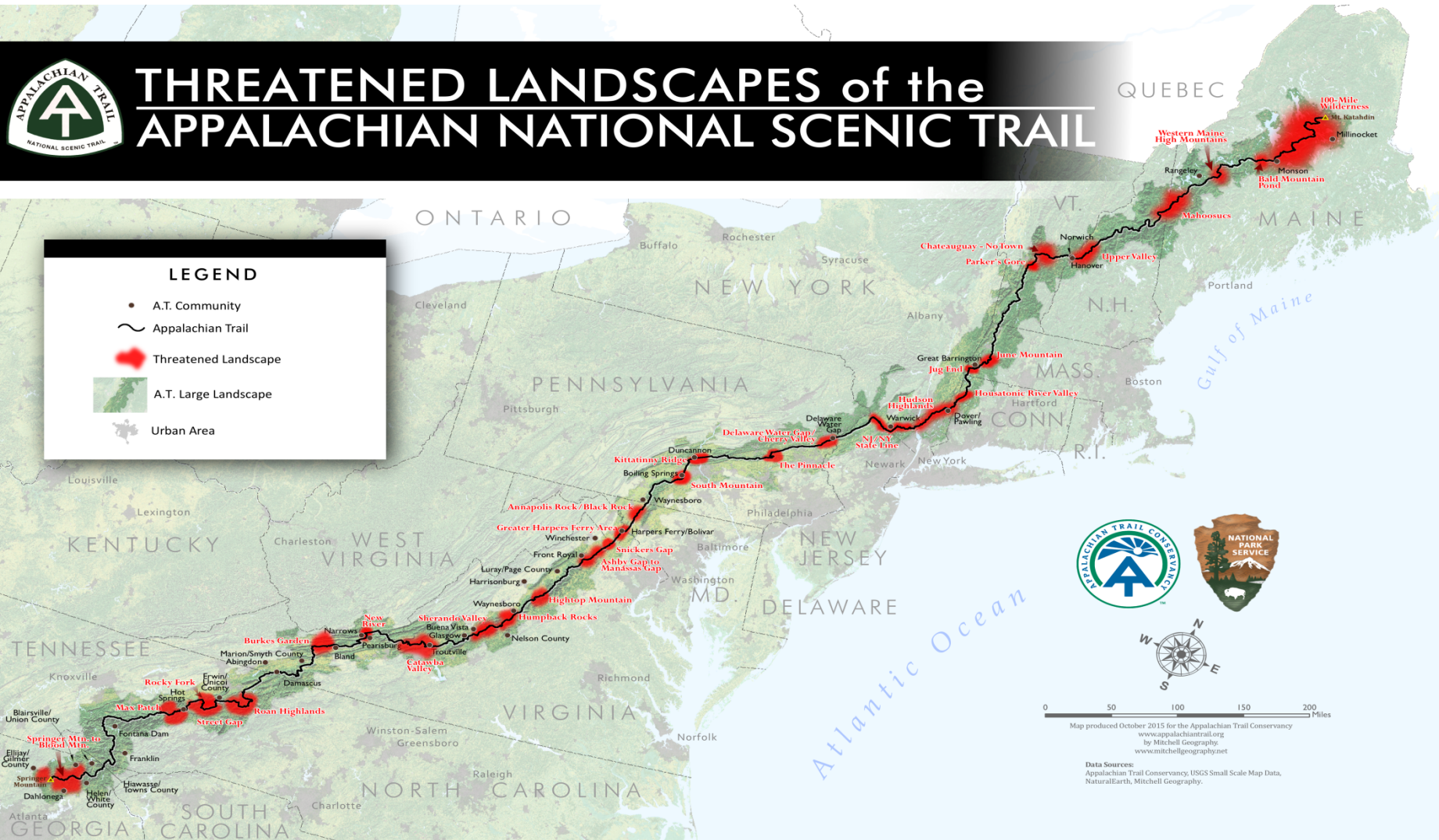
A. T. Landscape Conservation Initiative



THREATENED LANDSCAPES of the APPALACHIAN NATIONAL SCENIC TRAIL

LEGEND

- A.T. Community
- ~ Appalachian Trail
- Threatened Landscape
- A.T. Large Landscape
- Urban Area



0 50 100 150 200 Miles

Map produced October 2015 for the Appalachian Trail Conservancy
www.appalachiantrail.org
by Mitchell Geography
www.mitchellgeography.net

Data Sources:
Appalachian Trail Conservancy, USGS Small Scale Map Data,
NaturalEarth, Mitchell Geography.



Why is landscape-scale conservation important?

Many of the pristine views and natural resources along the A.T. are vulnerable to external threats which impact the hiking experience and undermine the sense of place so important to neighboring communities. These include:

- Commercial and residential development
- Energy development
- Destruction of diverse wildlife and plant habitats
- Loss of unfragmented habitat that provides resiliency to the impacts of climate change



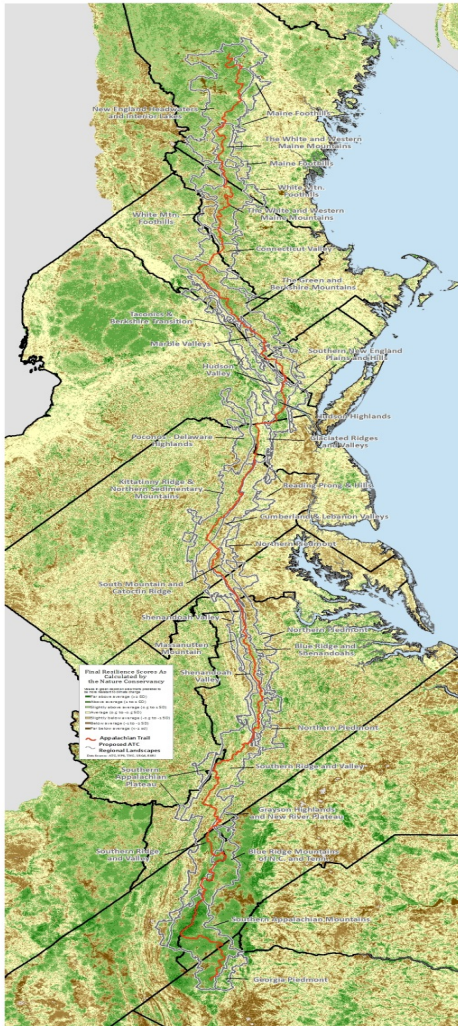
The Convergence of Landscape, Culture and Community



Conservation of the natural, ecological, cultural, historic, scenic, and community values of the landscapes of the Appalachian Trail.



Diverse Conservation Values

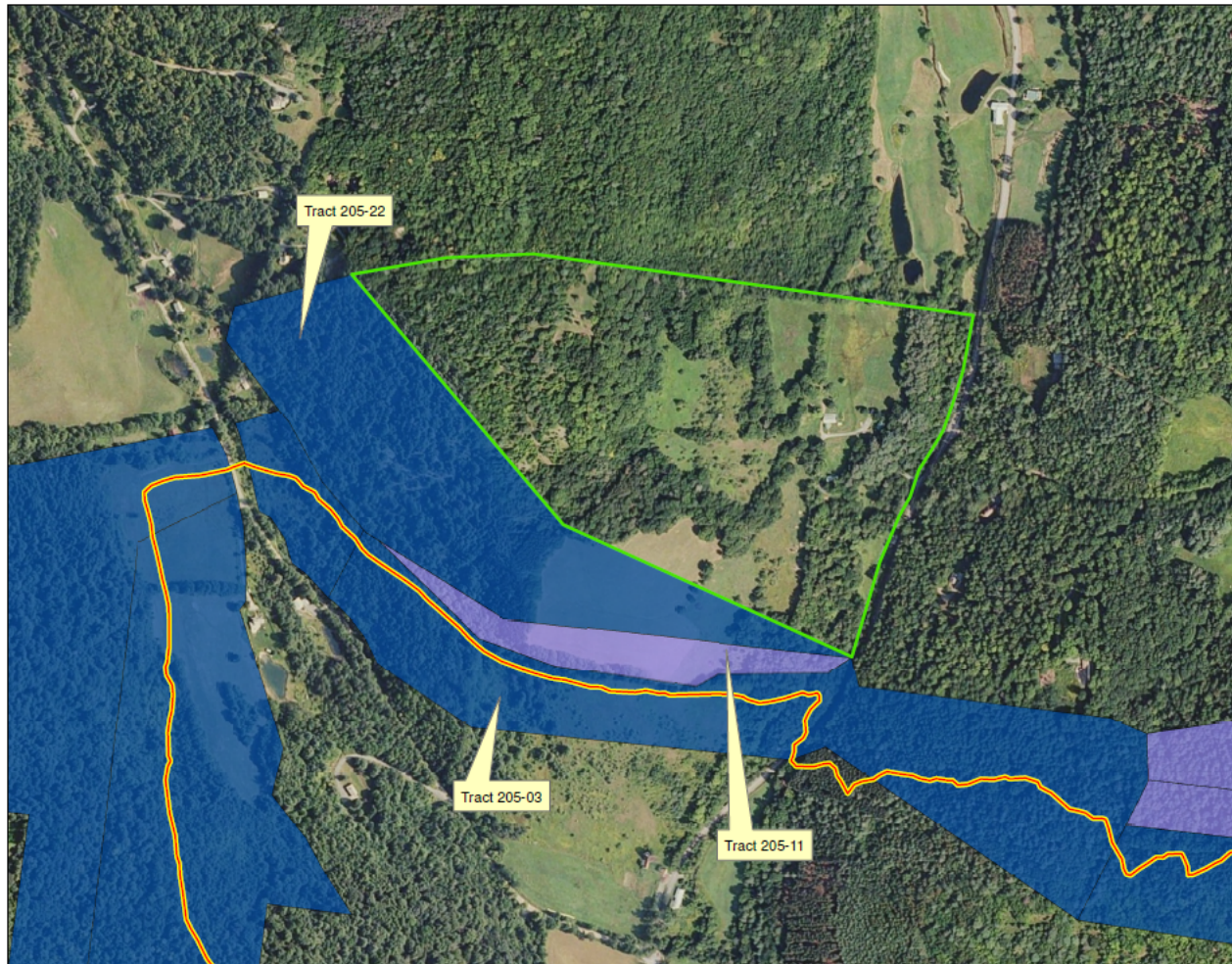


- Viewsheds
- Watersheds
- Wildlife Habitat
- Ecosystems
- Climate Change Resiliency
- Historic Sites
- Cultural Landscapes
- Outdoor Recreation





Trailside Easement in Vermont

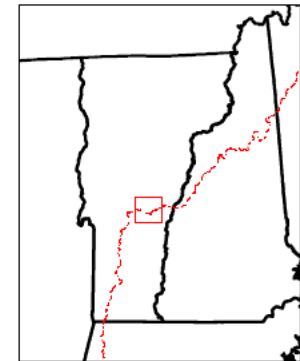


APPALACHIAN NATIONAL SCENIC TRAIL

Legend

- Appalachian Trail
- FEDERAL LAND - FEE
- FEDERALLY PROTECTED LAND - EASEMENT
- Approximate boundary proposed
Pompret Pines easement ~81.39 acres

OVERVIEW MAP



0 0.05 0.1 0.2
Miles

Produced by the Appalachian Trail GIS Program

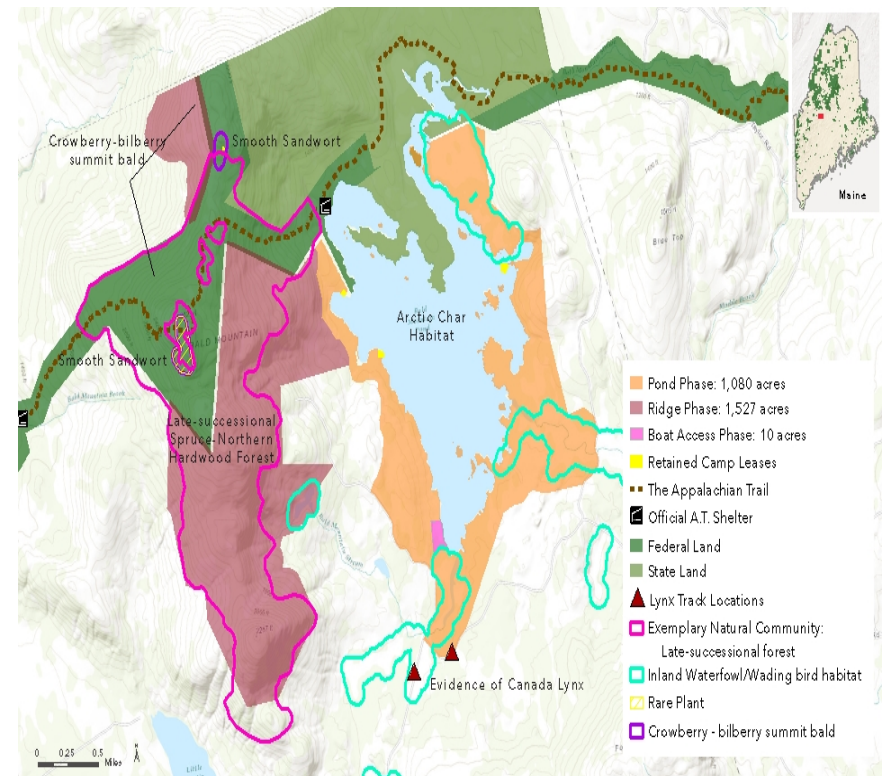


Matthew Stevens - 13 December 2013



New England Landscape Projects

- ↗ Maine
 - Gulf Hagas White Cap
 - Bald Mountain Pond
- ↗ New Hampshire
 - Hudson Farm
- ↗ Vermont
 - Gilbert Hill Farm
 - Rolston Rest
- ↗ Massachusetts
 - Hottle-Fahey
- ↗ Connecticut
 - Mt. Riga



Bald Mountain Pond

Bald Mountain TWP, Maine





RCPs Along the Appalachian Trail

