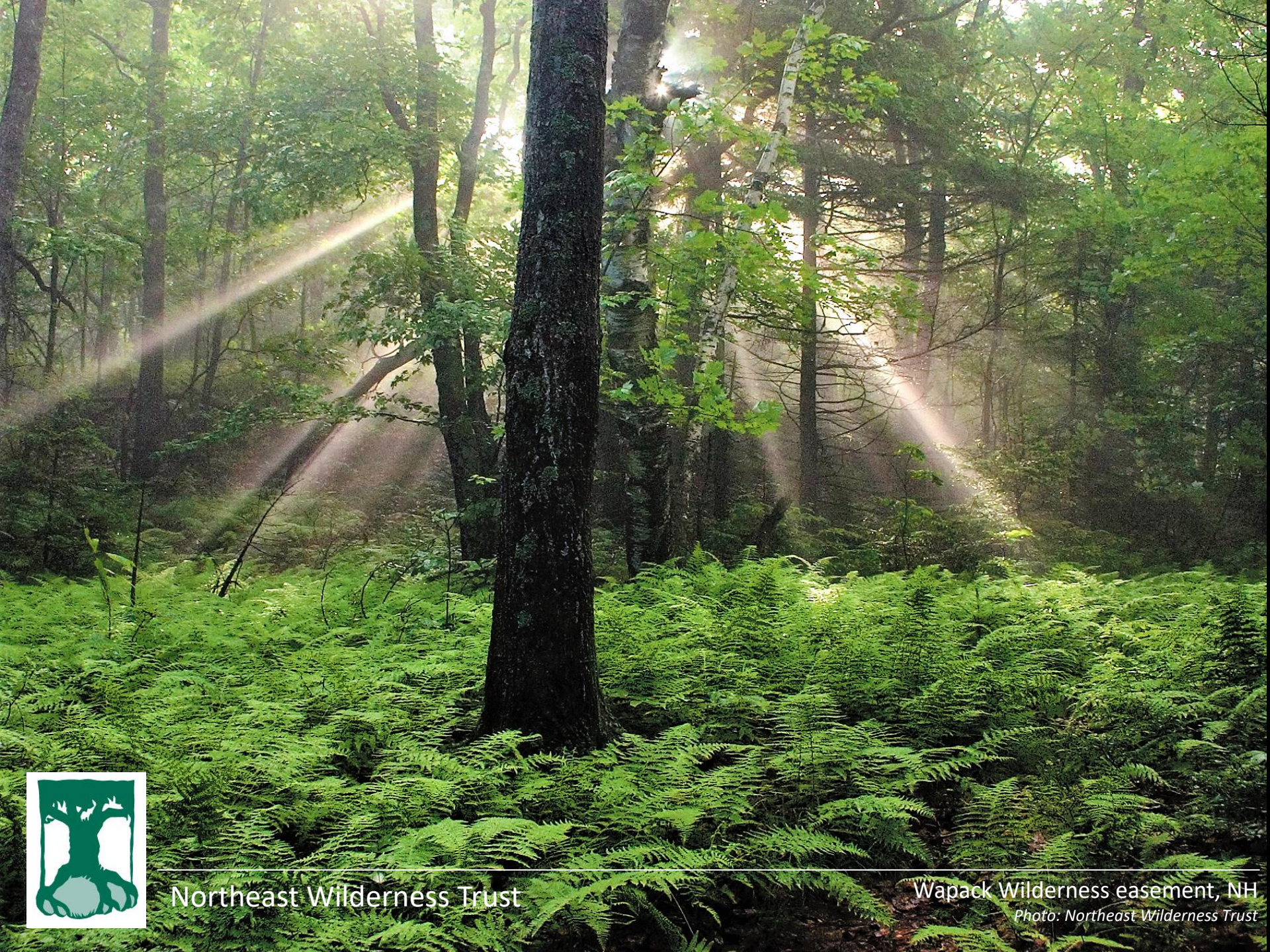




Jon Leibowitz, executive director



Northeast Wilderness Trust

Wapack Wilderness easement, NH

Photo: Northeast Wilderness Trust



Northeast Wilderness Trust

Eagle Mountain Wilderness Preserve, NY

Photo :Brendan Wiltse

A large, moss-covered tree trunk in a forest. The tree trunk is thick and textured, with a rough bark. It is covered in green moss, especially at the base. The background is a dense forest with green foliage and other tree trunks visible. The lighting is soft, suggesting a shaded forest environment.

What is Wilderness?

Wilderness is not an extravagance or a luxury, it is a place of original memory where we can witness and reflect on how the world is held together by natural laws. —Terry Tempest Williams

Wilderness is not simply a special kind of place, but rather a special commitment we make to a place. That commitment is freedom—to animals, and to the natural processes that produce integrity, beauty, and diversity of the land community.



Northeast Wilderness Trust



Northeast Wilderness Trust

Muddy Pond Wilderness Preserve, MA

What happens in Wilderness?

What else happens in Wilderness?



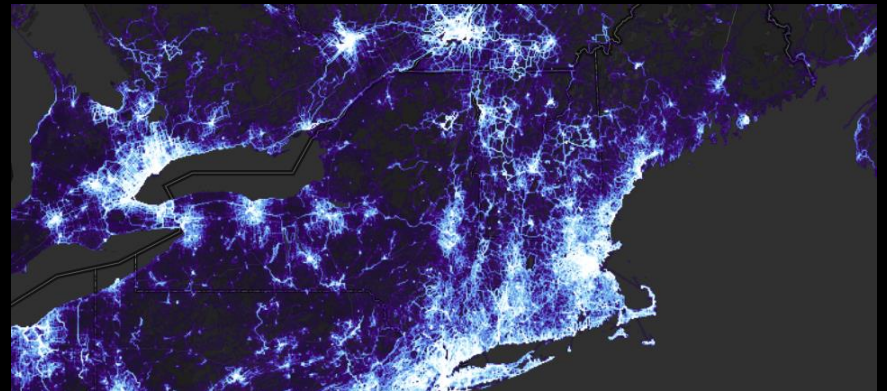


Northeast Wilderness Trust



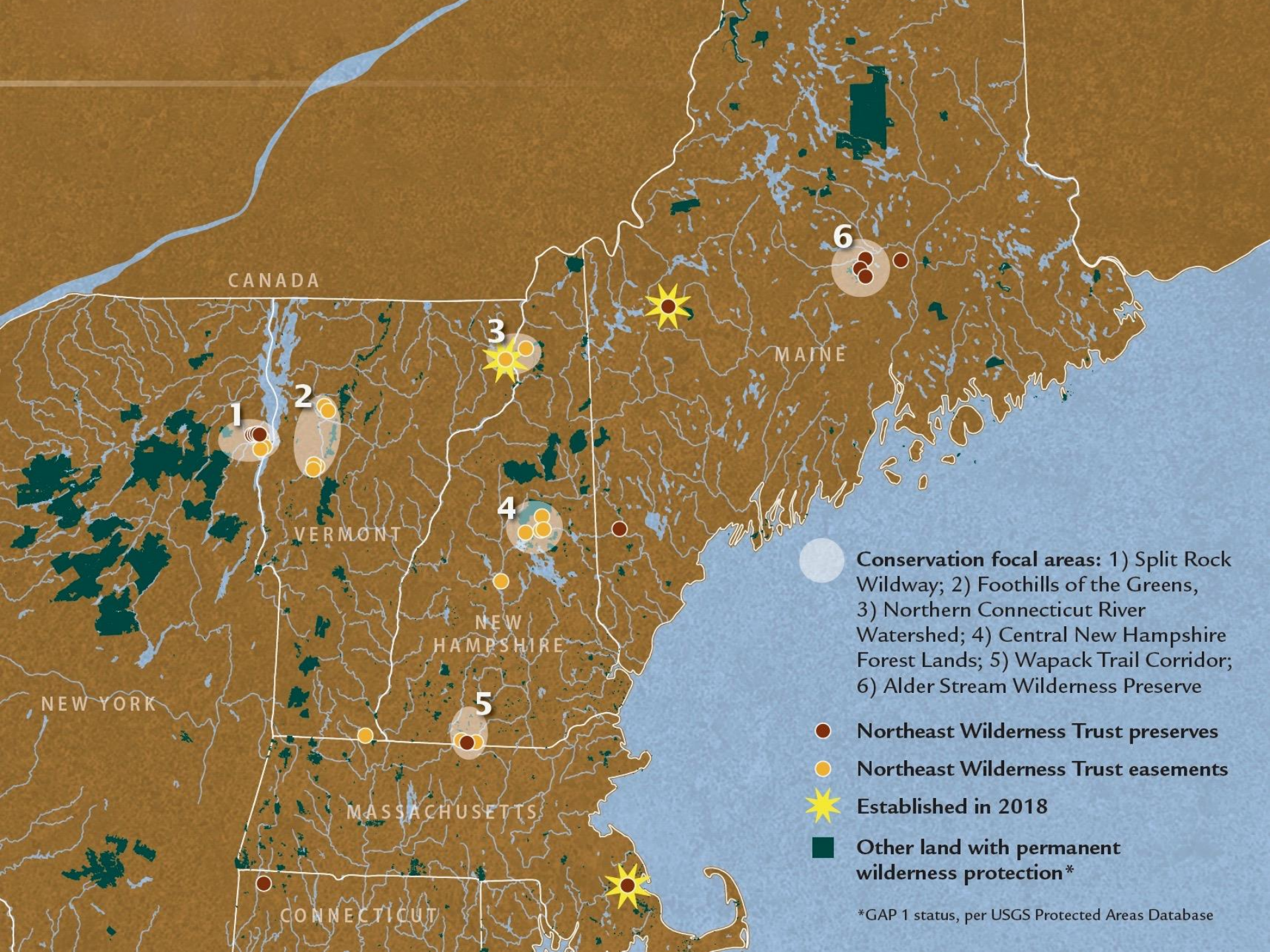
Wilderness and Access: *A Balancing Act*

- De-emphasize developed recreation
- Primitive and unconfined





Northeast Wilderness Trust



CANADA

MAINE

VERMONT

NEW HAMPSHIRE

NEW YORK

MASSACHUSETTS

CONNECTICUT

Conservation focal areas: 1) Split Rock Wildway; 2) Foothills of the Greens, 3) Northern Connecticut River Watershed; 4) Central New Hampshire Forest Lands; 5) Wapack Trail Corridor; 6) Alder Stream Wilderness Preserve

- Northeast Wilderness Trust preserves
- Northeast Wilderness Trust easements
- ★ Established in 2018
- Other land with permanent wilderness protection*

*GAP 1 status, per USGS Protected Areas Database



Northeast Wilderness Trust

Lone Mountain Wilderness Preserve, ME
Photo: Shelby Perry



Brian Pfeiffer



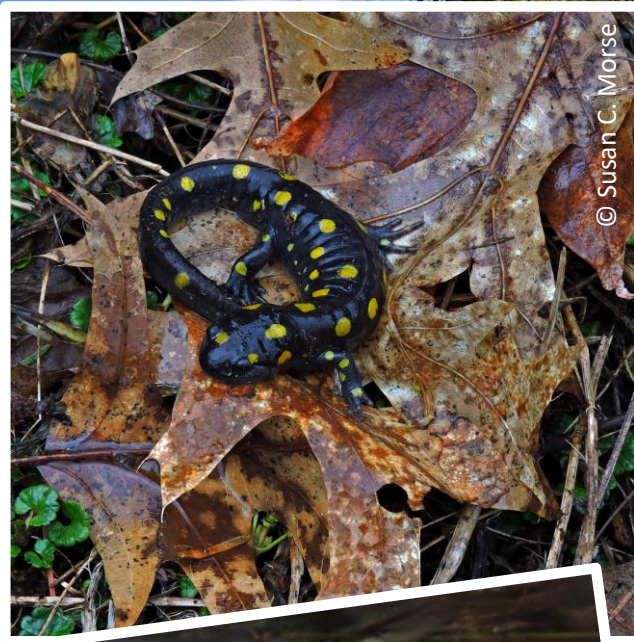
Northeast Wilderness Trust

Lone Mountain Wilderness Preserve, ME



Northeast Wilderness Trust

Muddy Pond Wilderness Preserve, MA



© Susan C. Morse



© Susan C. Morse



Northeast Wilderness Trust

Muddy Pond Wilderness Preserve, MA



Northeast Wilderness Trust

Burnt Mountain, VT



Zack Porter



© Susan C. Morse



Northeast Wilderness Trust

Burnt Mountain, VT

The Wildlands Partnership – A Northeast Wilderness Trust initiative

“We are between two forested worlds—the natural forest of pre-settlement North America and the recovered forest of the future...The Northeast Wilderness Trust is putting the wildlands side of W&W into action. The earlier forested world is not dead. We are partnering with local land trusts all over the region to scale up the amount of legally and perpetually conserved wildlands by studying and struggling to preserve its living remnants. And we do not believe that the future forest is powerless to be born. These remnants—with our help—will become the seeds from which a renewed forest spreads.”

- Mary Byrd Davis, *Eastern Old-Growth Forests*





NORTHEAST



WILDERNESS
TRUST



/newildernesstrust



@newildernesstrust



@newildernesstrust

newildernesstrust.org

Jon Leibowitz

Executive Director

17 State Street, Suite 302, Montpelier, VT

Jon@newildernesstrust.org

(802) 224-1000